

FILED DENISON, IOWA INDEXED Dm
 CRAWFORD COUNTY FOLLOW UP me
 PROOFED me

2003 MAY 20 PM 2:13

INST. NO. 2003-1930
 DENISE MEEVES, RECORDER
Denise Meeves
 FEE: 6.00

PREPARED BY - TERENCE E. CRAWFORD - SUNDQUIST ENGINEERING - 120 S. MAIN, DENISON, IOWA 51442 - PHONE (712)263-8118

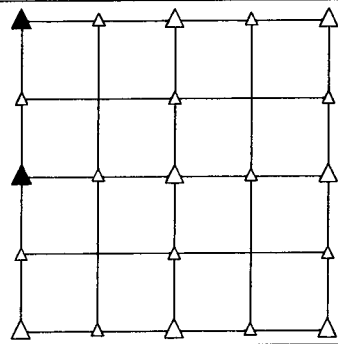
UNITED STATES PUBLIC LAND SURVEY CORNER CERTIFICATE OF

LAND SURVEY MONUMENT SITUATED IN SECTION 8, T 84 N, R 40 W OF
 THE 5TH P.M., CRAWFORD COUNTY, IOWA.
 PREVIOUSLY RECORDED IN BOOK _____, PAGE _____, OTHER _____

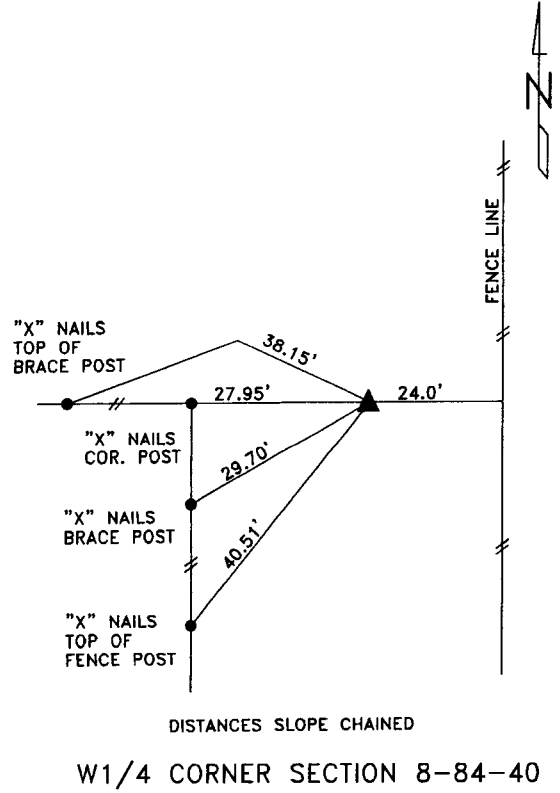
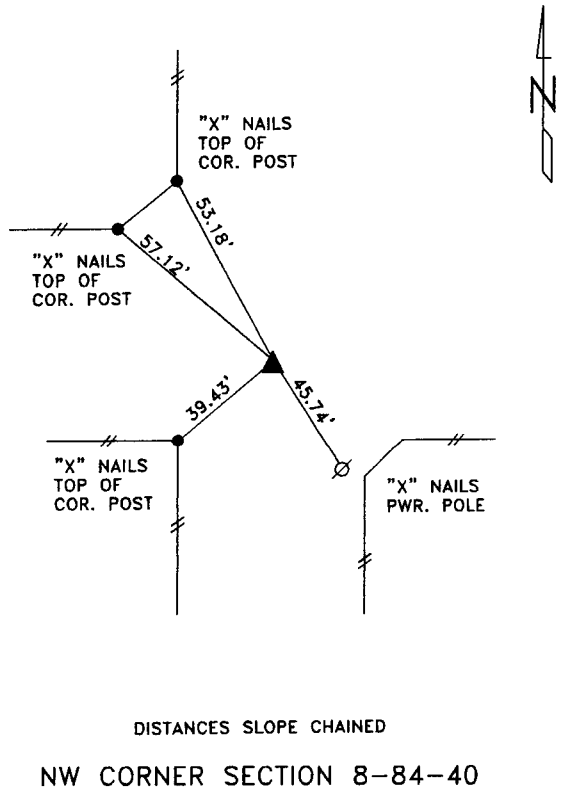
MONUMENT DESCRIPTION AND REMARKS

NW CORNER - FOUND OLD BRICK 5.0' DEEP, FOUND CONCRETE
 MONUMENT 5.5' DEEP, SET 5/8" DIA. x 18"
 IRON PIN W/YELLOW CAP #8893, 14" DEEP
 OVER CONCRETE MONUMENT.

W1/4 CORNER - FOUND CONCRETE MONUMENT 28" DEEP, RAISED
 WITH 5/8" DIA. x 24" IRON PIN W/YELLOW CAP
 #8893, 4" DEEP.



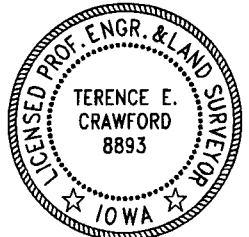
PLAN VIEW SHOWING RELATIVE LOCATION OF MONUMENT AND REFERENCE POINTS.



I HEREBY CERTIFY THAT THIS LAND SURVEYING DOCUMENT WAS PREPARED
 AND THE RELATED SURVEY WORK WAS PERFORMED BY ME OR UNDER
 MY DIRECT SUPERVISION AND THAT I AM A DULY LICENSED LAND
 SURVEYOR UNDER THE LAWS OF THE STATE OF IOWA.

Terence E. Crawford MAY 13 2003

 TERENCE E. CRAWFORD DATE
 IA LICENSE NO. 8893 EXP. DATE DECEMBER 31, 2003



SE PROJECT NO. 22003
 DRAWN BY: LMD