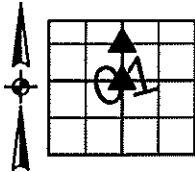


Sara Meseck, RECORDER
 Crawford County, Iowa
 Instr. Number: 2025-0659
 Recorded: 4/8/2025 at 11:08:54.0 AM
 Pages 1
 County Recording Fee: \$7.00
 Iowa E-Filing Fee: \$3.13
 Combined Fee: \$10.13
 Revenue Tax:

PREPARED BY AND RETURN TO: MIKE SCHULTE, SCHULTE SURVEYING, INC., 2003 390TH STREET, WESTSIDE, IA 51467 (712) 790-3489

UNITED STATES PUBLIC LAND SURVEY CORNER CERTIFICATE OF
 LAND SURVEY MONUMENTS SITUATED IN SECTION 01, TOWNSHIP 83 NORTH, RANGE 37 WEST, OF THE FIFTH
 PRINCIPAL MERIDIAN, CRAWFORD COUNTY, IOWA. PREVIOUSLY RECORDED IN SEE BELOW IN COUNTY
 RECORDER'S OFFICE. (book, page instrument number)



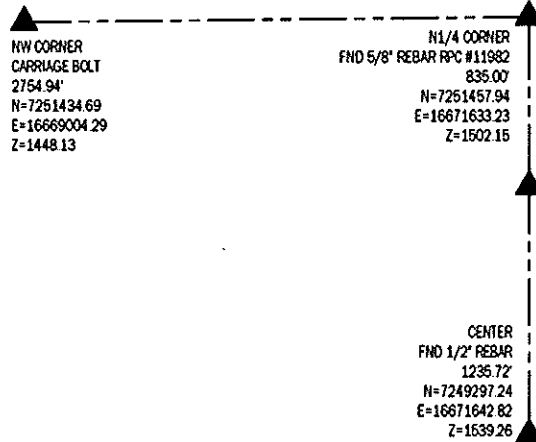
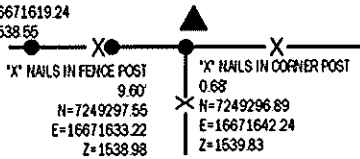
CENTER OF SECTION
 FND 1/2" REBAR

N=7249297.24 E=16671642.82 Z=1539.26
 USED CERTIFICATE RECORDED IN FEE BOOK 2006-2395 AND A
 METAL LOCATOR TO FIND A 1/2" REBAR NORTHEAST OF A NEW
 CORNER POST. VERIFIED WITH 2 REMAINING TIES.
 THIS CERTIFICATE IS BEING FILED TO UPDATE THE REFERENCE TIES.

SE CORNER NE1/4 FRL. NW1/4
 SET 5/8" REBAR YPC #17979

N=7250622.95 E=16671636.93 Z=1514.07
 NO RECORD OF CORNER FOUND. PROPORTIONED CORNER FIT
 FENCE WELL. PROBLED BUT DIDN'T FIND STONE. SET 5/8" REBAR
 YPC #17979 ON-LINE WITH N1/4 CORNER AND CENTER, IN LINE
 WITH FENCE TO THE EAST.
 THIS CERTIFICATE IS BEING FILED DUE TO NONE OF RECORD.

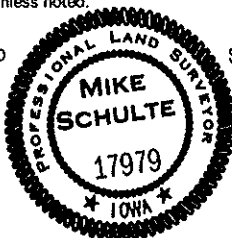
*X' NAILS IN FENCE POST
 23.69
 N=7249297.67
 E=16671619.24
 Z=1538.55



*All distances are measured horizontally unless noted.

I HEREBY CERTIFY THAT THIS LAND SURVEYING DOCUMENT WAS
 PREPARED BY ME OR UNDER MY DIRECT PERSONAL SUPERVISION AND
 THAT I AM A DULY LICENSED PROFESSIONAL LAND SURVEYOR UNDER
 THE LAWS OF THE STATE OF IOWA.

Mike Schulte
 MIKE SCHULTE
 LICENSE NUMBER 17979
 LICENSE RENEWAL DATE IS DECEMBER 31, 2025
 PAGES COVERED BY THIS SEAL: 1 OF 1



LIST CORNERS TO BE INDEXED

CORNER	SECTION	TWP	RANGE
CENTER	1	83	37
SE CORNER NE1/4 FRL. NW1/4	1	83	37

BASIS OF BEARING
 IARCS ZONE 7 - US SURVEY FEET
 IARIN DERIVED - NAD83(2011)EPOCH 2010.00

SCHULTE SURVEYING, INC.

DRAWN BY: SLG
 PROJ NUMBER: 25-026