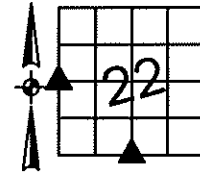


Sara Meseck, RECORDER
 Crawford County, Iowa
 Instr. Number: 2024-2454
 Recorded: 12/12/2024 at 9:00:50.0 AM
 Pages 1
 County Recording Fee: \$7.00
 Iowa E-Filing Fee: \$3.13
 Combined Fee: \$10.13
 Revenue Tax:

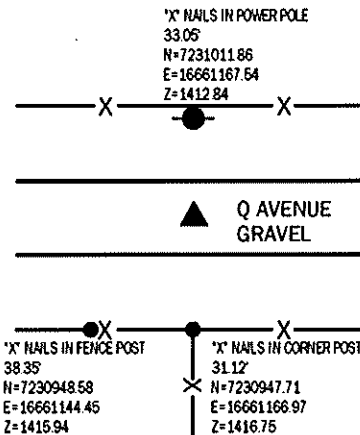
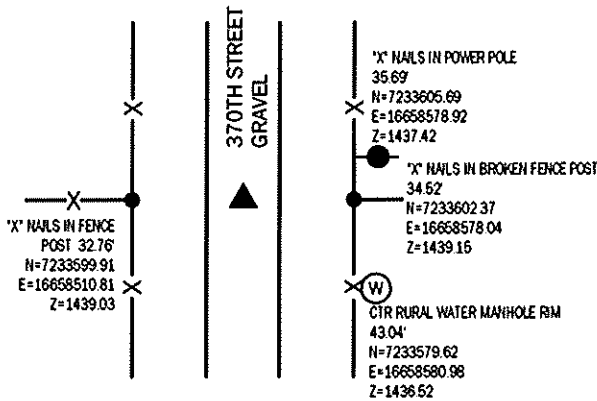
PREPARED BY AND RETURN TO: MIKE SCHULTE, SCHULTE SURVEYING, INC., 2003 390TH STREET, WESTSIDE, IA 51467 (712) 790-3489

UNITED STATES PUBLIC LAND SURVEY CORNER CERTIFICATE OF
 LAND SURVEY MONUMENTS SITUATED IN SECTION 22, TOWNSHIP 83 NORTH, RANGE 37 WEST, OF THE FIFTH
 PRINCIPAL MERIDIAN, CRAWFORD COUNTY, IOWA. PREVIOUSLY RECORDED IN SEE BELOW IN COUNTY
(book, page instrument number)
 RECORDER'S OFFICE.



W1/4 CORNER
 FND CONCRETE MONUMENT 5" DEEP
 N=7233600.87 E=16658543.55
 USED CERTIFICATE RECORDED IN FEE BOOK 2004-2569 TO FIND A
 CONCRETE MONUMENT 5" DEEP. VERIFIED WITH 1 REMAINING TIE.
 THIS CERTIFICATE IS BEING FILED TO UPDATE THE REFERENCE TIES.

S1/4 CORNER
 FND 1/2" REBAR YPC #10318 3" DEEP
 N=7230978.81 E=16661168.06
 USED CERTIFICATE RECORDED IN FEE BOOK 2004-1463 AND A
 METAL LOCATOR TO FIND A 1/2" REBAR YPC #10318, 3" DEEP.
 VERIFIED WITH 3 REMAINING TIES.
 THIS CERTIFICATE IS BEING FILED TO UPDATE THE REFERENCE TIES.



*All distances are measured horizontally unless noted.

I HEREBY CERTIFY THAT THIS LAND SURVEYING DOCUMENT WAS
 PREPARED BY ME OR UNDER MY DIRECT PERSONAL SUPERVISION AND
 THAT I AM A DULY LICENSED PROFESSIONAL LAND SURVEYOR UNDER
 THE LAWS OF THE STATE OF IOWA.

Mike Schulte
 MIKE SCHULTE
 LICENSE NUMBER 17979
 LICENSE RENEWAL DATE IS DECEMBER 31, 2025
 PAGES COVERED BY THIS SEAL: 1 OF 1
 2024/12/11
 DATE



LIST CORNERS TO BE INDEXED

| CORNER | SECTION | TWP | RANGE |
|-------------|---------|-----|-------|
| W1/4 CORNER | 22 | 83 | 37 |
| E1/4 CORNER | 21 | 83 | 37 |
| S1/4 CORNER | 22 | 83 | 37 |
| N1/4 CORNER | 27 | 83 | 37 |

BASIS OF BEARING

IA-RCS ZONE 6 - US SURVEY FEET
 IA-RTN DERIVED - NAD83(2011) EPOCH 2010.00

SCHULTE SURVEYING, INC.

DRAWN BY: SLG
 PROJ NUMBER: 24-072