

FILED DENISON, IOWA
CRAWFORD COUNTY

2000 JA 24 PM 3:01

INST. NO. 200-0180
DENISE MEEVES, RECORDER
Denise Meeves
FEE 10.00

INDEXED
FOLLOW UP
PROCESSED

PREPARED BY - H. DALE WIGHT - CRAWFORD COUNTY ENGINEER - COURTHOUSE DENISON, IOWA 51442 (712) 263-2449

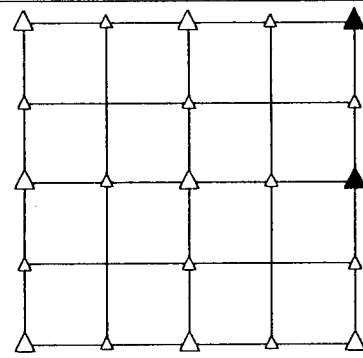
UNITED STATES PUBLIC LAND SURVEY CORNER CERTIFICATE OF

LAND SURVEY MONUMENT SITUATED IN SECTION 10, T 82 N, R 37 W OF
THE 5TH P.M., CRAWFORD COUNTY, IOWA.
PREVIOUSLY RECORDED IN BOOK , PAGE , OTHER

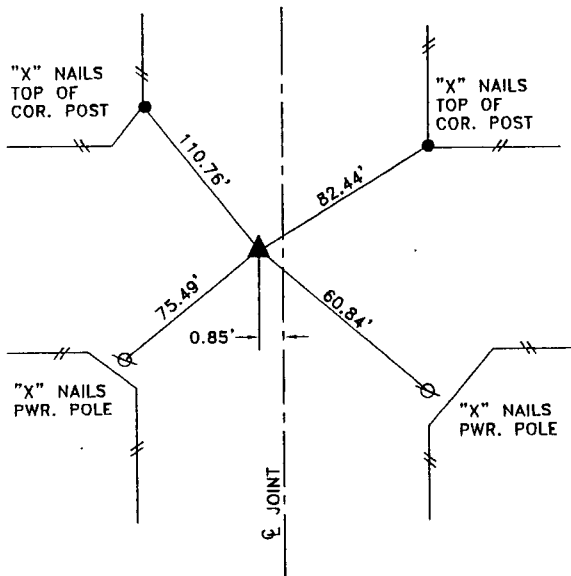
MONUMENT DESCRIPTION AND REMARKS

NE CORNER - SET BOLT FLUSH WITH ASPHALT
FROM CONSTRUCTION TIES

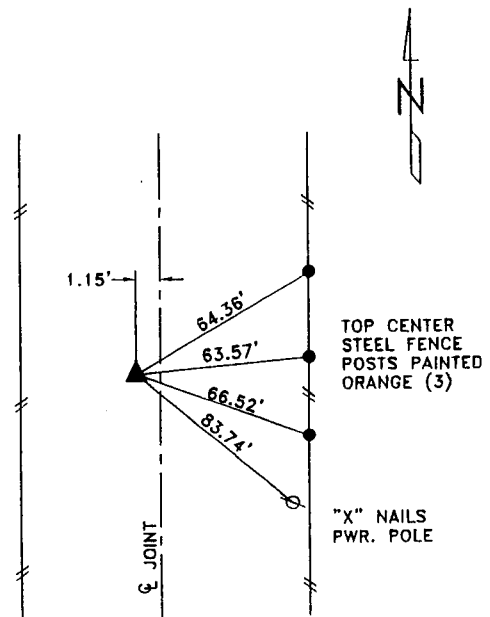
E1/4 CORNER - SET BOLT FLUSH WITH ASPHALT
FROM CONSTRUCTION TIES



PLAN VIEW SHOWING RELATIVE LOCATION OF MONUMENT AND REFERENCE POINTS.



DISTANCES PLUMB CHAINED
NE CORNER SECTION 10-82-37



DISTANCES PLUMB CHAINED
E1/4 CORNER SECTION 10-82-37

I hereby certify that this engineering document or
land surveying document was prepared by me or
under my direct personal supervision and that I am
a duly licensed Professional Engineer and a duly
licensed Land Surveyor, under the laws of the
State of Iowa.

SIGNED H. Dale Wight DATE (Month, Day, Year) 1-24-2000
H. DALE WIGHT, P.E. & L.S. Iowa Reg. No. 5798
My license renewal date is December 31,

