

INDEXED
 FOLLOW UP
 PROOFED
 SCANNED

Instrument #: 2014-1956 Total Pages: 1
 09/24/2014 12:42:10 PM
 PLC PLAT CORNER CER
 Recording Fee: \$7.00 Transfer Tax: \$0
 Denise Reeves, Recorder, Crawford County Iowa

WARDER C. HILLHOUSE JR. M.H.F. ENGINEERING P.C. 300 W. MCKINLEY JEFFERSON, IA. (515)386-4101

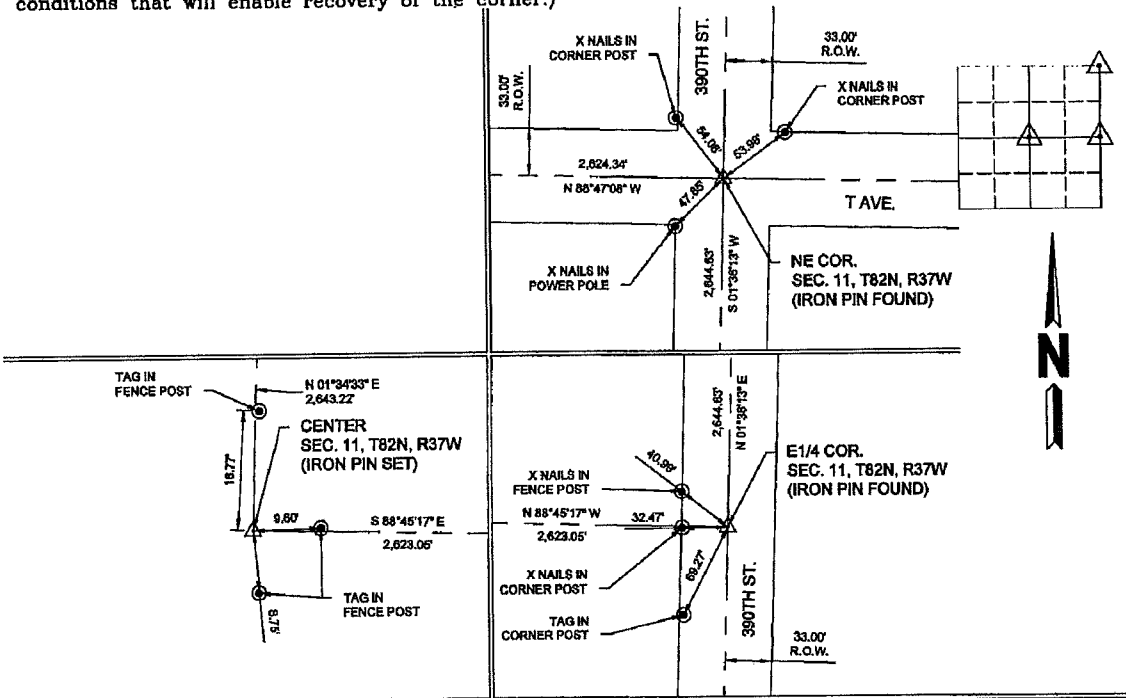
UNITED STATES PUBLIC LAND SURVEY CORNER CERTIFICATE OF
 Land Survey Monuments in Section 11 , Township 82 , Range 37 ,
 of the Fifth Principal Meridian, CRAWFORD County, Iowa.
 Previously recorded in _____ in County Recorder's Office.
 (book, page, document number, etc.)

(Show reason for preparing this certificate, the evidence and detailed procedures used in establishing the corner positions and monumentation found or placed.)

Monument Description and Remarks:
 CORNER LOCATED FOR SURVEY WORK WITHIN SECTION.
 BEARING DATUM: NAD83 IOWA STATE PLANES, NORTH ZONE, US FOOT.

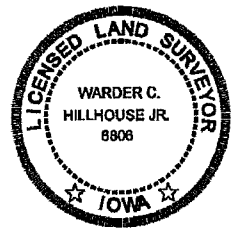
PLAN - VIEW

(Show a minimum of three reference ties to durable physical objects, relevant monuments and physical conditions that will enable recovery of the corner.)



I hereby certify that this land surveying document and the related survey work was performed by me or under my direct personal supervision and that I am a duly licensed land surveyor under the laws of the state of Iowa.
 Signature: Warder C. Hillhouse Jr.
 Warder C. Hillhouse, Jr.

Date: 9/23/14 Lic. No. 6806
 License Renewal Dec. 31, 2015
 Date Surveyed: 9/2014



List Corners to be Indexed

| Corners | Section | Twp | Range |
|---|---------|-----|-------|
| NE CORNER N - 3443829.04 E - 4482612.68 | 11 | 82 | 37 |
| E1/4 CORNER N - 3441185.44 E - 4482538.68 | 11 | 82 | 37 |
| CNTR CORNER N - 3441242.45 E - 4478916.25 | 11 | 82 | 37 |

File No. 14103-1

M.H.F. ENGINEERING, P.C.
 ENGINEERS - LAND SURVEYORS
 Jefferson, Iowa 50129 Ph. (515)386-4101

Seal