

INDEXED MB
 FOLLOW UP MB
 PROOFED MB
 SCANNED MB

REC009772



Crawford County Recorder Denise Meeves
 FEE BOOK 2006-0736 3/20/2006 @ 11:17AM
 PLC PLAT CORNER CERBook: Page: #: 1
 Total Fees: \$.00

PREPARED BY: MICKAEL BERNDT
 CRAWFORD COUNTY ENGINEERS OFFICE - COURTHOUSE - DENISON, IA. - 712-263-2449

**UNITED STATES PUBLIC LAND SURVEY CORNER CERTIFICATE
 OF**

LAND SURVEY MONUMENT SITUATED IN IOWA TOWNSHIP, THE NORTH 1/4
 CORNER OF SECTION 11, T-82N, R-37W OF THE 5TH P.M. CRAWFORD COUNTY, IOWA.

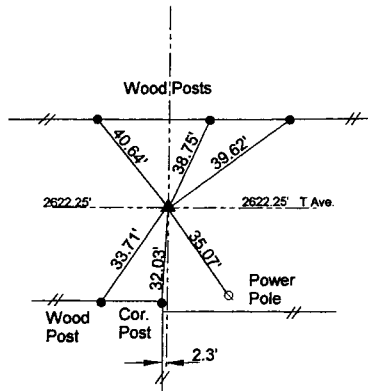
PREVIOUSLY RECORDED AS NO.

MONUMENT DESCRIPTION AND REMARKS

NORTH 1/4 CORNER SEC. 11-82-37

3/07/06
 ACCORDING TO THE RECORDS IN THE COUNTY ENGINEERS OFFICE NO MONUMENT WAS SET AT THIS LOCATION. THE CORNER WAS ESTABLISHED ON A STRAIGHT LINE BETWEEN THE NE COR. AND THE NW COR. OF SEC. 11 AND A SPLIT OF THE DISTANCE BETWEEN THEM. THIS AGREED VERY CLOSELY WITH THE PRESENT FENCE LINES. A 5/8"X14" REBAR WITH YELLOW CAP STAMPED #14808, WAS SET 8" DEEP AND TIED OFF.

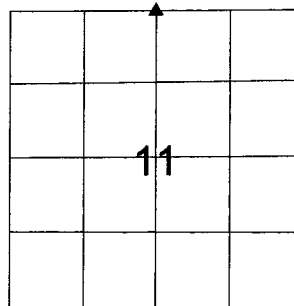
NORTH 1/4 CORNER SEC. 11-82-37



ALL DISTANCES ARE SLOPED CHAINED

ALL TIES ARE "X" NAILS UNLESS OTHERWISE NOTED.

CORNER: NORTH 1/4
 SECTION: 11
 TOWNSHIP: 82N
 RANGE: 37W



CERTIFICATION:

I HEREBY CERTIFY THAT THIS LAND SURVEYING DOCUMENT WAS PREPARED AND THE RELATED SURVEY WORK WAS PERFORMED BY ME OR UNDER MY DIRECT PERSONAL SUPERVISION AND THAT I AM A DULY LICENSED LAND SURVEYOR UNDER THE LAWS OF THE STATE OF IOWA.

Mickael F. Berndt 3-20-06
 Signature Date of Survey
 Mickael F. Berndt 14808 Dec. 31, 2006
 Typed Name L.S. No. License Renewal Date

Pages covered by this seal 1

