

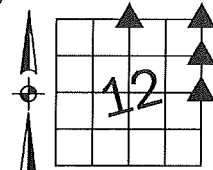
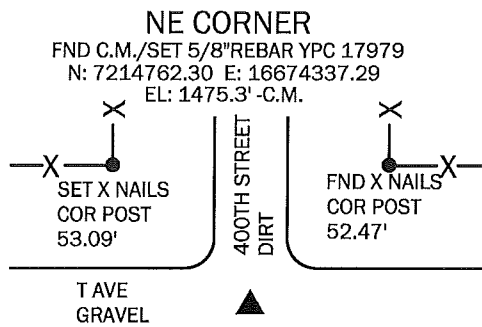
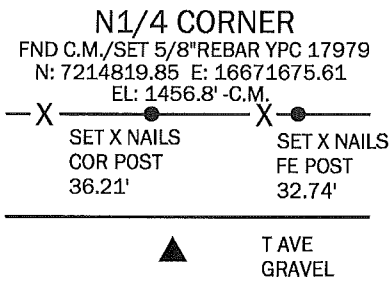
Denise Meeves RECORDER  
 Crawford County, Iowa  
 Instr. Number: 2018-1031  
 Recorded: 5/17/2018 at 2:26:10.0 PM  
 Pages 1  
 Fee Amount: \$7.00  
 Revenue Tax:

3421p  
 3427  
 3428  
 3429

PREPARED BY AND RETURN TO: MIKE SCHULTE, SCHULTE SURVEYING, INC., 2003 390TH STREET, WESTSIDE, IA 51467 (712) 790-3489

**UNITED STATES PUBLIC LAND SURVEY CORNER CERTIFICATE OF**

LAND SURVEY MONUMENTS SITUATED IN SECTION 12, TOWNSHIP 82 NORTH, RANGE 37 WEST, OF THE FIFTH PRINCIPAL MERIDIAN, CRAWFORD COUNTY, IOWA. PREVIOUSLY RECORDED IN N/A IN COUNTY RECORDER'S OFFICE.  
(book, page instrument number)

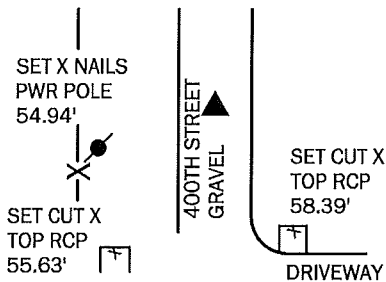


SET X NAILS PWR POLE 90.10'

NO CURRENT CORNER CERT. CO ENGINEER'S TIES INDICATE A C.M. IN 1945. ROAD LOOKED FILLED. COUNTY GRADEALL ASSISTED IN FINDING A BROKEN C.M. 3' DEEP. SET MAGNET AND BRICK OVER C.M. FILLED HOLE AND SET 5/8" REBAR WITH YPC 17979 OVER C.M. 4" DEEP.

NO CURRENT CORNER CERT. BOTH CRAWFORD AND CARROLL HAVE ENGINEER'S TIES, AND INDICATE A C.M. CARROLL'S TIES SEEM TO BE THE MOST RECENT RECORD. ROAD LOOKED FILLED. DUG A 30" DEEP HOLE AND FOUND A BROKEN C.M. SET 5/8" REBAR WITH YPC 17979 OVER C.M. 4" DEEP.

**SE COR NE1/4NE1/4**  
 SET 5/8"REBAR YPC 17979  
 N: 7213457.74 E: 16674353.09



I FOUND NO RECORDS INDICATING THIS CORNER WAS EVER SET, NOR DID I SEE ANY RECORD THAT THE E1/2 OF THE NE1/4 OF SEC 12 WAS EVER SPLIT. SET 5/8" REBAR WITH YPC 17979 4" DEEP BY SINGLE PROPORTION.

**E1/4 CORNER**

FND C.M./SET 5/8"REBAR YPC 17979  
 N: 7212153.19 E: 16674368.89  
 EL: 1420.7' -C.M.



ALL TIES FROM CARROLL AND CRAWFORD COUNTY ENGINEER'S TIES ARE NOW GONE. USED METAL LOCATOR AND DUG A 2' HOLE & FOUND OLD FENCING. USED CRAWFORD COUNTY GRADEALL TO FIND A BROKEN C.M. 4" DEEP. SET 5/8" REBAR WITH YPC 17979 OVER IT 4" DEEP

\*All distances are measured horizontally unless noted.

**LIST CORNERS TO BE INDEXED**

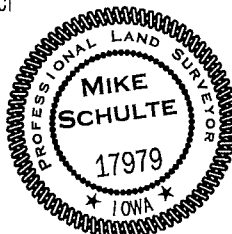
CORNER	SECTION	TWP	RANGE
N1/4 COR	12	82	37
S1/4 COR	1	82	37
NE COR	12	82	37
SE COR	1	82	37
SE COR NENE	12	82	37
E1/4 COR	12	82	37

**BASIS OF BEARING**

laRCS ZONE 6 - US SURVEY FEET  
 laRTN DERIVED - NAD83(2011)(EPOCH 2010.00)

I HEREBY CERTIFY THAT THIS LAND SURVEYING DOCUMENT WAS PREPARED BY ME OR UNDER MY DIRECT PERSONAL SUPERVISION AND THAT I AM A DULY LICENSED PROFESSIONAL LAND SURVEYOR UNDER THE LAWS OF THE STATE OF IOWA.

*Mike Schulte*  
 MIKE SCHULTE  
 DATE 2018/05/15  
 LICENSE NUMBER: 17979  
 LICENSE RENEWAL DATE IS DECEMBER 31, 2019  
 PAGES COVERED BY THIS SEAL: 1 OF 1



**SCHULTE SURVEYING, INC.**

DRAWN BY: MLS  
 PROJ NUMBER: 18-014