

INDEXED lm
 FOLLOW UP _____
 PROOFED _____
 SCANNED _____

Instrument #: 2017-1573
 08/10/2017 09:55:20 AM Total Pages: 1
 PLC PLAT CORNER CER
 Recording Fee: \$7.00 Transfer Tax: \$0
 Denise Neeves, Recorder, Crawford County Iowa



This document prepared by: Semke & Associates - 712-792-2276
 Micheal G. Semke, L.S. #10318 - 716 N. Crawford St. - Carroll, Iowa

UNITED STATES PUBLIC LAND SURVEY CORNER CERTIFICATE of
 Land Survey Monuments situated in Section 12, Township 82 North, Range 37
 West of the Fifth Principal Meridian, Crawford County, Iowa.
 Previously referenced in Book _____, Page _____ in County Recorder's Office.

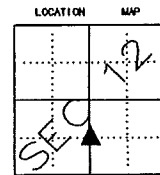
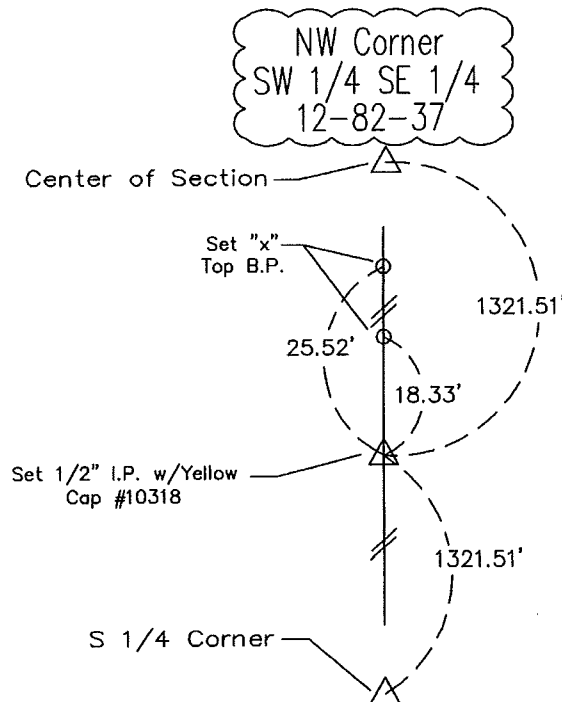
(Show reason for preparing this certificate, the evidence and detailed procedures used in establishing the corner positions and monumentation found or placed.)

S 1/4 Corner Dug and Probed @ Mid Point in N.-
S. Fence Line - Set 1/2" Iron Pin

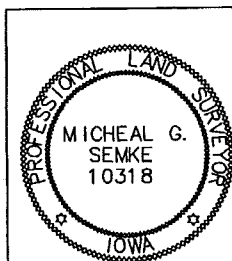
Note: All pins set are 1/2" x 24" Rerod w/Yellow Cap #10318 unless noted otherwise.

PLAN - VIEW

(Show a minimum of three reference ties to durable physical objects, relevant monuments and physical conditions that will enable recovery of the corner.)



Note: All ties Horizontal Distance unless noted otherwise - S.D. = Slope Distance



I HEREBY CERTIFY THAT THIS LAND SURVEYING DOCUMENT WAS PREPARED AND RELATED SURVEY WORK WAS PERFORMED BY ME OR UNDER MY DIRECT PERSONAL SUPERVISION AND THAT I AM A DULY LICENSED LAND SURVEYOR UNDER THE LAWS OF THE STATE OF IOWA.

Micheal G. Semke 7/25/17
 Signature Date

Micheal G. Semke, L.S. No. 10318

Printed of Typed Name

Pages or sheets covered by this seal THIS PAGE My license renewal date is 12/31/17.

List Corners to be Indexed

Corners	Section	Twp	Range
NW Cor.			
SW 1/4 SE 1/4	12	82	37