

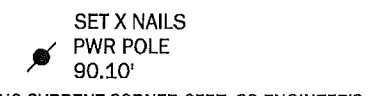
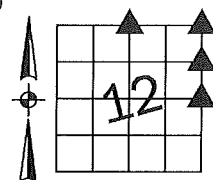
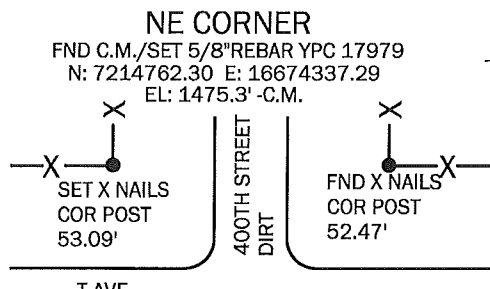
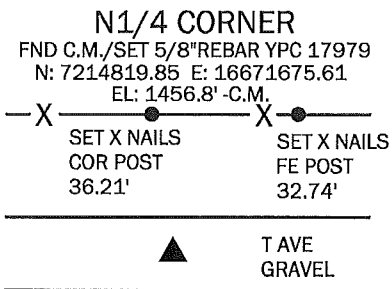
Denise Meeves RECORDER
 Crawford County, Iowa
 Instr. Number: 2018-1031
 Recorded: 5/17/2018 at 2:26:10.0 PM
 Pages 1
 Fee Amount: \$7.00
 Revenue Tax:

3121p
 3127
 3128
 3129

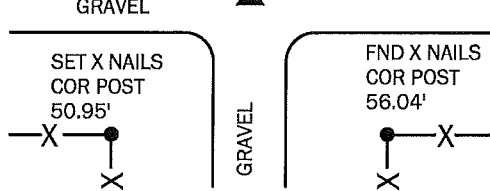
PREPARED BY AND RETURN TO: MIKE SCHULTE, SCHULTE SURVEYING, INC., 2003 390TH STREET, WESTSIDE, IA 51467 (712) 790-3489

UNITED STATES PUBLIC LAND SURVEY CORNER CERTIFICATE OF

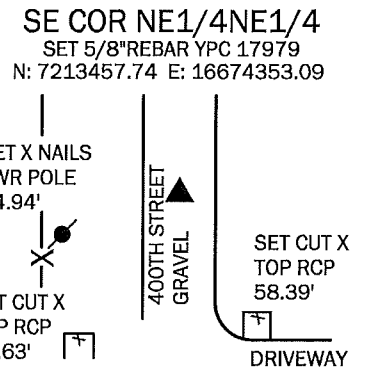
LAND SURVEY MONUMENTS SITUATED IN SECTION 12, TOWNSHIP 82 NORTH, RANGE 37 WEST, OF THE FIFTH PRINCIPAL MERIDIAN, CRAWFORD COUNTY, IOWA. PREVIOUSLY RECORDED IN N/A IN COUNTY RECORDER'S OFFICE.
(book, page instrument number)



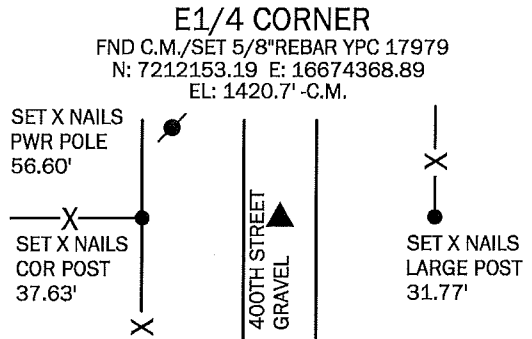
NO CURRENT CORNER CERT. CO ENGINEER'S TIES INDICATE A C.M. IN 1945. ROAD LOOKED FILLED. COUNTY GRADEALL ASSISTED IN FINDING A BROKEN C.M. 3' DEEP. SET MAGNET AND BRICK OVER C.M. FILLED HOLE AND SET 5/8" REBAR WITH YPC 17979 OVER C.M. 4" DEEP.



NO CURRENT CORNER CERT. BOTH CRAWFORD AND CARROLL HAVE ENGINEER'S TIES, AND INDICATE A C.M. CARROLL'S TIES SEEM TO BE THE MOST RECENT RECORD. ROAD LOOKED FILLED. DUG A 30" DEEP HOLE AND FOUND A BROKEN C.M. SET 5/8" REBAR WITH YPC 17979 OVER C.M. 4" DEEP.



I FOUND NO RECORDS INDICATING THIS CORNER WAS EVER SET, NOR DID I SEE ANY RECORD THAT THE E1/2 OF THE NE1/4 OF SEC 12 WAS EVER SPLIT. SET 5/8" REBAR WITH YPC 17979 4" DEEP BY SINGLE PROPORTION.



ALL TIES FROM CARROLL AND CRAWFORD COUNTY ENGINEER'S TIES ARE NOW GONE. USED METAL LOCATOR AND DUG A 2' HOLE & FOUND OLD FENCING. USED CRAWFORD COUNTY GRADEALL TO FIND A BROKEN C.M. 4" DEEP. SET 5/8" REBAR WITH YPC 17979 OVER IT 4" DEEP

*All distances are measured horizontally unless noted.

I HEREBY CERTIFY THAT THIS LAND SURVEYING DOCUMENT WAS PREPARED BY ME OR UNDER MY DIRECT PERSONAL SUPERVISION AND THAT I AM A DULY LICENSED PROFESSIONAL LAND SURVEYOR UNDER THE LAWS OF THE STATE OF IOWA.

Mike Schulte
 MIKE SCHULTE
 DATE 2018/05/15
 LICENSE NUMBER: 17979
 LICENSE RENEWAL DATE IS DECEMBER 31, 2019
 PAGES COVERED BY THIS SEAL: 1 OF 1



LIST CORNERS TO BE INDEXED

CORNER	SECTION	TWP	RANGE
N1/4 COR	12	82	37
S1/4 COR	1	82	37
NE COR	12	82	37
SE COR	1	82	37
SE COR NENE	12	82	37
E1/4 COR	12	82	37

BASIS OF BEARING
 IaRCS ZONE 6 - US SURVEY FEET
 IaRTN DERIVED - NAD83(2011)(EPOCH 2010.00)

SCHULTE SURVEYING, INC.

DRAWN BY: MLS
 PROJ NUMBER: 18-014