

INDEXED \_\_\_\_\_  
FOLLOW UP \_\_\_\_\_  
PROCESSED \_\_\_\_\_  
SCANNED \_\_\_\_\_



Crawford County Recorder Denise Meeves  
Fee Book 2007-0168 REC013193  
01/17/2007 8:11:27AM # Pages 1  
PLC PLAT CORNER CER  
Total Fees: \$0.00

PREPARED BY: MICKAEL BERNDT  
CRAWFORD COUNTY ENGINEERS OFFICE - COURTHOUSE - DENISON, IA. - 712-263-2449

## UNITED STATES PUBLIC LAND SURVEY CORNER CERTIFICATE OF

LAND SURVEY MONUMENT SITUATED IN IOWA TOWNSHIP, THE NORTHWEST  
CORNER OF SECTION 13, T-82N, R-37W OF THE 5TH P.M. CRAWFORD COUNTY, IOWA.

PREVIOUSLY RECORDED AS NO.

### MONUMENT DESCRIPTION AND REMARKS

NORTHWEST CORNER SEC. 13-82-37

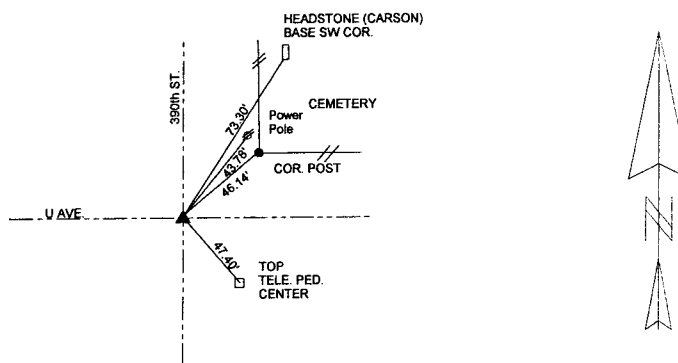
7-06-05

FOUND BRIDGE SPIKE 3" DEEP RETIED. COUNTY TO GRADE ROAD IN 2006.

10-17-06

COUNTY GRADED THE ROAD. FOUND BRIDGE SPIKE 18" DEEP. SET 1/2"X8" REBAR OVER IT 8" DEEP AND RETIED.

NORTHWEST CORNER SEC. 13-82-37



ALL DISTANCES ARE SLOPED CHAINED

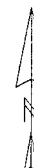
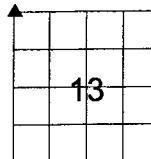
All ties are "X" nails unless otherwise noted.

CORNER: NORTHWEST

SECTION: 13

TOWNSHIP: 82N

RANGE: 37W



#### CERTIFICATION:

I HEREBY CERTIFY THAT THIS LAND SURVEYING DOCUMENT WAS PREPARED AND THE RELATED SURVEY WORK WAS PERFORMED BY ME OR UNDER MY DIRECT PERSONAL SUPERVISION AND THAT I AM A DULY LICENSED LAND SURVEYOR UNDER THE LAWS OF THE STATE OF IOWA.

*Mickael F. Berndt*

Signature

Mickael F. Berndt

Typed Name

14808

L.S. No.

Dec. 31, 2008

License Renewal Date

1-17-07

Date of Survey

Pages covered by this seal: 1

