

2002 OCT 22 AM 8:17

INST. NO. 2002-3482
DENISE MEEVES, RECORDER
Denise Meeves
FEE: 6.00

This document prepared by: Semke & Associates - 712-792-2276
Michael G. Semke, L.S. #10318 - 716 N. Crawford - Carroll, Iowa

UNITED STATES PUBLIC LAND SURVEY CORNER CERTIFICATE
OF

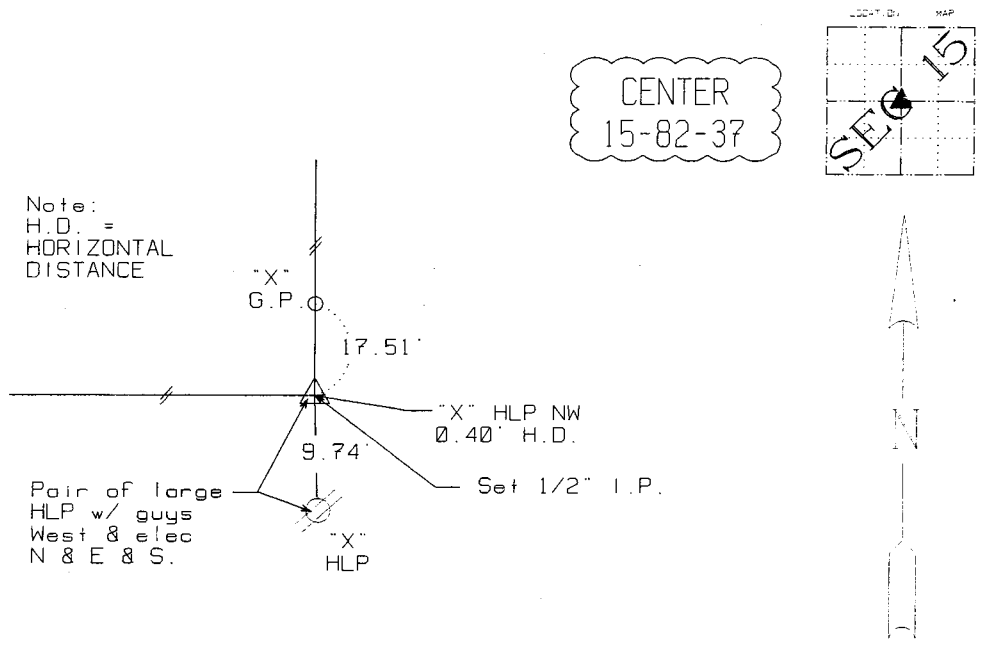
Land Survey Monuments situated in Section 15, Township 82, Range 37, of the Fifth Principal Meridian, Crawford County, Iowa. Previously recorded in n/a in County Recorder's Office.
(book, page, document number, etc.)

(Show reason for preparing this certificate, the evidence and detailed procedures used in establishing the corner positions and monumentation found or placed.)

Dug & probed and searched with metal locator.
Found nothing. Set 1/2" iron pin at base of
High Line Pole in line with fences North and
West and East. No record ties available.

PLAN - VIEW

(Show a minimum of three reference ties to durable physical objects, relevant monuments and physical conditions that will enable recovery of the corner.)



Note: All ties slope chained unless noted



I HEREBY CERTIFY THAT THIS CORNER CERTIFICATE
WAS PREPARED BY ME OR UNDER MY DIRECT PERSONAL
SUPERVISION AND THAT I AM A PROFESSIONAL LAND
SURVEYOR UNDER THE LAWS OF THE STATE OF IOWA.
MY REGISTRATION IS SUBJECT TO RENEWAL 12-31-01

10/18/02
DATE *M. G. Semke*
MICHAEL G. SEMKE, PLS NO 10318

List Corners to be Indexed			
Corners	Section	Twp	Range
CTR SEC.	15	82	37