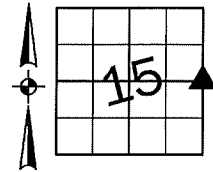


Denise Meeves RECORDER  
 Crawford County, Iowa  
 Instr. Number: 2021-1721  
 Recorded: 8/2/2021 at 3:56:46.0 PM  
 Pages 1  
 County Recording Fee: \$7.00  
 Iowa E-Filing Fee: \$3.13  
 Combined Fee: \$10.13  
 Revenue Tax:

PREPARED BY AND RETURN TO: MIKE SCHULTE, SCHULTE SURVEYING, INC., 2003 390TH STREET, WESTSIDE, IA 51467 (712) 790-3489

**UNITED STATES PUBLIC LAND SURVEY CORNER CERTIFICATE OF**  
 LAND SURVEY MONUMENTS SITUATED IN SECTION 15, TOWNSHIP 82 NORTH, RANGE 37 WEST, OF THE FIFTH  
 PRINCIPAL MERIDIAN, CRAWFORD COUNTY, IOWA. PREVIOUSLY RECORDED IN SEE BELOW IN COUNTY  
(book, page instrument number)  
 RECORDER'S OFFICE.

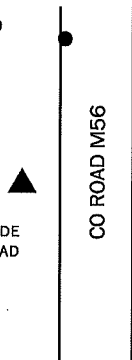


**EAST 1/4 CORNER**

FND 5/8" REBAR  
 N=7206902.72 E=16663799.00

USED CORNER CERTIFICATE RECORDED IN BOOK 2004-2246 AND A METAL DETECTOR TO FIND  
 A 5/8" REBAR IN THE FORE SLOPE OF THE ROAD, HAS LOW MAGNETISM. VERIFIED MONUMENT  
 WITH 1 REMAINING TIE AND ACCEPTED AS SECTION CORNER.  
 THIS CERTIFICATE IS BEING FILED TO UPDATE THE REFERENCE TIES.

SET MAG NAIL IN WHITE LINE  
 61.43'  
 N=7206962.28  
 E=16663813.99



5/8" REBAR IN SIDE  
 SLOPE 28' WEST OF CL ROAD

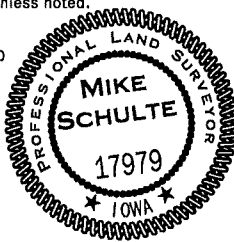
PP SET "X" NAILS IN POWER POLE  
 87.56'  
 N=7206912.49  
 E=16663886.02

NGS DISK MJ0331 IN SW CORNER OF  
 HEADWALL SOUTH OF TRACKS  
 376.85'  
 N=7206526.19  
 E=16663783.42

\*All distances are measured horizontally unless noted.

I HEREBY CERTIFY THAT THIS LAND SURVEYING DOCUMENT WAS  
 PREPARED BY ME OR UNDER MY DIRECT PERSONAL SUPERVISION AND  
 THAT I AM A DULY LICENSED PROFESSIONAL LAND SURVEYOR UNDER  
 THE LAWS OF THE STATE OF IOWA.

*Mike Schulte*  
 \_\_\_\_\_  
 MIKE SCHULTE  
 LICENSE NUMBER: 17979  
 LICENSE RENEWAL DATE IS DECEMBER 31, 2021  
 PAGES COVERED BY THIS SEAL: 1 OF 1



**LIST CORNERS TO BE INDEXED**

CORNER	SECTION	TWP	RANGE
E1/4 CORNER	15	82	37
W1/4 CORNER	14	82	37

**BASIS OF BEARING**

1aRCS ZONE 6 - US SURVEY FEET  
 1aRTN DERIVED - NAD83(2011)[EPOCH 2010.00]

**SCHULTE SURVEYING, INC.**

DRAWN BY: MLS  
 PROJ NUMBER: 21-058