

2003 JAN 10 PM 2:05

INST. NO. 2003-0172  
DENISE MEEVES, RECORDER  
*Denise Meeves*  
FEE \$ 6.00

*FILED*  
*REC'D*

PREPARED BY - TERENCE E. CRAWFORD - SUNDQUIST ENGINEERING - 120 S. MAIN, DENISON, IOWA 51442 - PHONE (712)263-8118

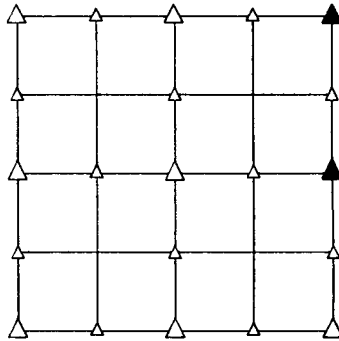
### UNITED STATES PUBLIC LAND SURVEY CORNER CERTIFICATE OF

LAND SURVEY MONUMENT SITUATED IN SECTION 16, T 82 N, R 37 W OF  
THE 5TH P.M., CRAWFORD COUNTY, IOWA.  
PREVIOUSLY RECORDED IN BOOK \_\_\_\_\_, PAGE \_\_\_\_\_, OTHER \_\_\_\_\_

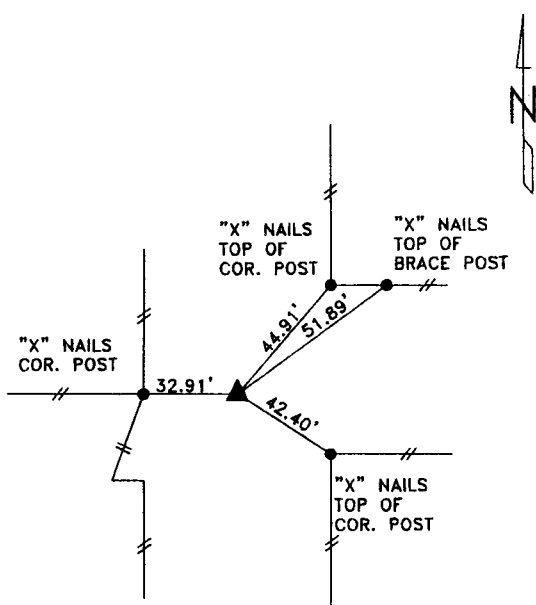
#### MONUMENT DESCRIPTION AND REMARKS

NE CORNER - FOUND CONCRETE MONUMENT 0.80' DEEP.

E1/4 CORNER - SET 5/8" DIA. x 9" IRON PIN W/YELLOW CAP  
#8893 0.3' DEEP. SET AT SPLIT AND ON LINE  
BETWEEN NE CORNER AND SE CORNER OF  
SECTION 16.

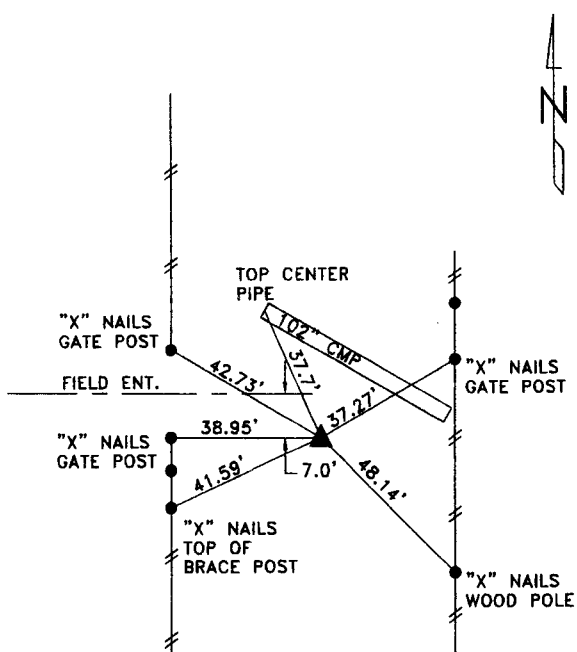


#### PLAN VIEW SHOWING RELATIVE LOCATION OF MONUMENT AND REFERENCE POINTS.



DISTANCES SLOPE CHAINED

NE CORNER SECTION 16-82-37



DISTANCES SLOPE CHAINED

E1/4 CORNER SECTION 16-82-37

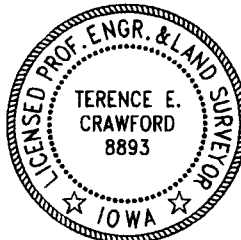
I HEREBY CERTIFY THAT THIS LAND SURVEYING DOCUMENT WAS PREPARED  
AND THE RELATED SURVEY WORK WAS PERFORMED BY ME OR UNDER  
MY DIRECT SUPERVISION AND THAT I AM A DULY LICENSED LAND  
SURVEYOR UNDER THE LAWS OF THE STATE OF IOWA.

*Terence E. Crawford*

DEC 17 2002

TERENCE E. CRAWFORD  
IA LICENSE NO. 8893

DATE  
EXP. DATE DECEMBER 31, 2003



SE PROJECT NO. 215902  
DRAWN BY: LMD