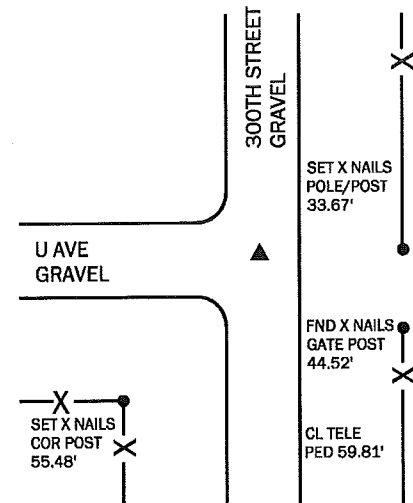


Denise Meeves RECORDER
 Crawford County, Iowa
 Instr. Number: 2018-0056
 Recorded: 1/8/2018 at 9:49:13.0 AM
 Pages 1
 Fee Amount: \$7.00
 Revenue Tax:

PREPARED BY AND RETURN TO: MIKE SCHULTE, SCHULTE SURVEYING, INC., 2003 390TH STREET, WESTSIDE, IA 51467 (712) 790-3489

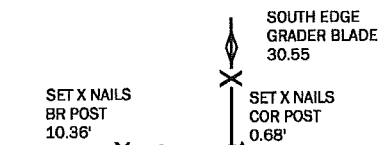
UNITED STATES PUBLIC LAND SURVEY CORNER CERTIFICATE OF
 LAND SURVEY MONUMENTS SITUATED IN SECTION 16, TOWNSHIP 82 NORTH, RANGE 37 WEST, OF THE FIFTH
 PRINCIPAL MERIDIAN, CRAWFORD COUNTY, IOWA. PREVIOUSLY RECORDED IN SEE BELOW IN COUNTY
(book, page instrument number)
 RECORDER'S OFFICE.

NW CORNER
 FND 5/8" REBAR 3" DEEP
 N: 7209537.79 E: 16653259.68



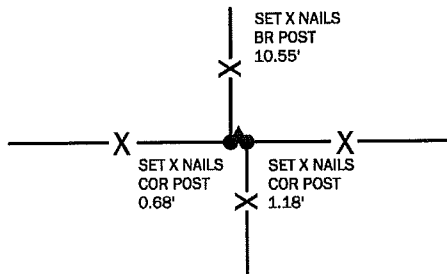
USD 1997 TIES BY HILLHOUSE TO FIND 5/8" REBAR AS INDICATED IN TIES ACCEPTED MONUMENT AS CORNER. A FEW TIES ARE NOW MISSING SO ADDITIONAL TIES WERE ADDED.

N1/4 CORNER
 FND 5/8" REBAR - RESET 5/8" REBAR WITH YPC 17979
 N: 7209549.54 E: 16655887.87



NO RECENT OR RECORDED TIES OF RECORD WERE FOUND. ENGINEER'S TIE INDICATE A C.M. WAS FOUND AND REBAR SET. I ASSUMED THE REBAR WAS AROUND WHEN THE ROAD WAS VACATED OR A SURVEY TO THE SOUTH. NO TIES WERE FOUND. MADE A SEARCH WITH METAL LOCATER BUT THERE'S A LOT OF METAL AROUND THE POST. USING SURVEY BY DALE WIGHT; FOUND A 5/8" REBAR TO THE SOUTH. USED THE PLATTED DISTANCE TO NARROW SEARCH AREA AND FOUND A BENT 5/8" REBAR. SPUN THE REBAR AND RESET IT WITH A NEW 5/8" REBAR WITH YPC 17979. WHEN RESETTING THE NEW REBAR THE BAR WAS HITTING SOMETHING. POSSIBLY A C.M. BELOW.

CENTER OF SECTION
 SET 5/8" REBAR WITH YPC 17979
 N: 7206907.22 E: 16655911.23

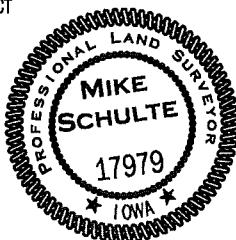


NO RECORDED OR ENGINEERS TIES WERE FOUND. USING SURVEY BY DALE WIGHT VERIFIED CORNER POSTS. SEARCHED FOR REBAR, C.M., OR STONE BUT NONE WAS FOUND. SET 5/8" REBAR WITH YPC 17979 AND TIED CORNER.

*All distances are measured horizontally unless noted.

I HEREBY CERTIFY THAT THIS LAND SURVEYING DOCUMENT WAS PREPARED BY ME OR UNDER MY DIRECT PERSONAL SUPERVISION AND THAT I AM A DULY LICENSED PROFESSIONAL LAND SURVEYOR UNDER THE LAWS OF THE STATE OF IOWA.

Mike Schulte
 MIKE SCHULTE 2018/01/05
 LICENSE NUMBER: 17979
 LICENSE RENEWAL DATE IS DECEMBER 31, 2019
 PAGES COVERED BY THIS SEAL: 1 OF 1



LIST CORNERS TO BE INDEXED

CORNER	SECTION	TWP	RANGE
SE COR	8	82	37
NE COR	17	82	37
SW COR	9	82	37
NW COR	16	82	37
S1/4 COR	9	82	37
N1/4 COR	16	82	37
CENTER SECTION	16	82	37

BASIS OF BEARING

laRCS ZONE 6 - US SURVEY FEET
 laRTN DERIVED - NAD83(2011)(EPOCH 2010.00)

SCHULTE SURVEYING, INC.

DRAWN BY: MLS
 PROJ NUMBER: 17-069