

INDEXED 4/18  
 FOLLOW UP 4/18  
 FILED 4/18  
 SCANNED

Crawford County Recorder  
 Denise Meeves  
**Fee Book 2009-1006**  
 04/08/2009 8:10:15AM  
 PLC PLAT CORNER CER # Pages: 1  
 Book; Page: \$7.00  
 Total Fees:

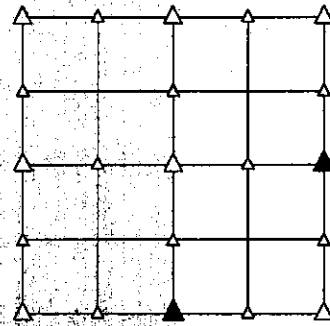
PREPARED BY - TERENCE E. CRAWFORD - SUNDQUIST ENGINEERING - 120 S. MAIN, DENISON, IOWA 51442 - PHONE (712) 263-8118

**UNITED STATES PUBLIC LAND SURVEY CORNER CERTIFICATE  
 OF**

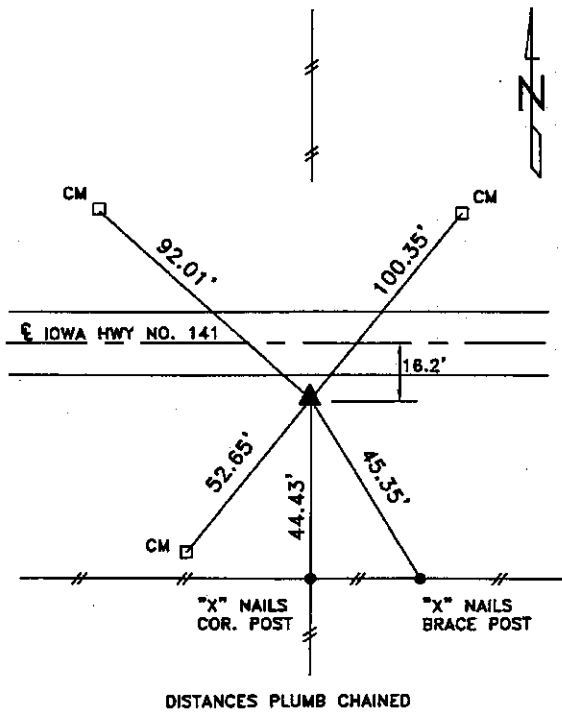
LAND SURVEY MONUMENT SITUATED IN SECTION 18, T. 82 N, R. 37 W OF  
 THE 5TH P.M., CRAWFORD COUNTY, IOWA.  
 PREVIOUSLY RECORDED IN BOOK \_\_\_\_\_, PAGE \_\_\_\_\_, OTHER #2009-0558

**MONUMENT DESCRIPTION AND REMARKS**

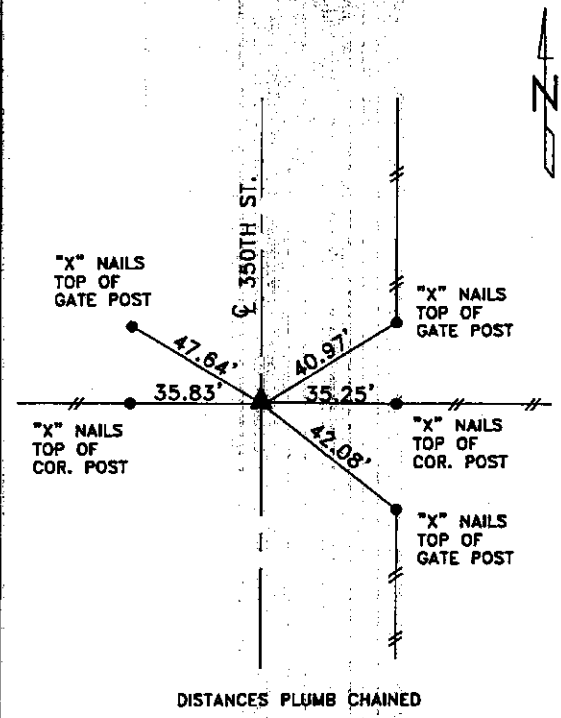
S1/4 CORNER - FOUND CM W/1/2" DIA. IRON PIN 13" DEEP.  
 E1/4 CORNER - SET 5/8" DIA. X 18" IRON PIN W/YELLOW CAP  
 #8893 0.5' DEEP. NO EVIDENCE OF CORNER,  
 RESET FROM LOCAL EVIDENCE.



**PLAN VIEW SHOWING RELATIVE LOCATION OF MONUMENT AND REFERENCE POINTS.**



DISTANCES PLUMB CHAINED  
 S1/4 CORNER SECTION 18-82-37



DISTANCES PLUMB CHAINED  
 E1/4 CORNER SECTION 18-82-37

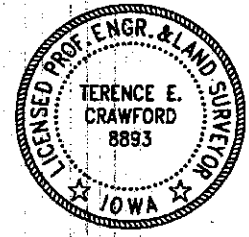
I HEREBY CERTIFY THAT THIS LAND SURVEYING DOCUMENT WAS PREPARED  
 AND THE RELATED SURVEY WORK WAS PERFORMED BY ME OR UNDER MY  
 DIRECT PERSONAL SUPERVISION AND THAT I AM A DULY LICENSED LAND  
 SURVEYOR UNDER THE LAWS OF THE STATE OF IOWA.

*Terence E. Crawford*

APR 06 2009

TERENCE E. CRAWFORD  
 IA LICENSE NO. 8893

DATE  
 EXP. DATE DECEMBER 31, 2009



SE PROJECT NO. 20209  
 DRAWN BY: LLL