

INDEX SM  
 SCAN \_\_\_\_\_  
 FOLLOW UP \_\_\_\_\_  
 PROOF \_\_\_\_\_

Instrument #: 2022-1948  
 08/12/2022 11:49:18 AM Total Pages: 1  
 PLC PLAT COR CERT  
 Recording Fee: \$7.00 Transfer Tax: \$0  
 Denise Neeves, Recorder, Crawford County Iowa



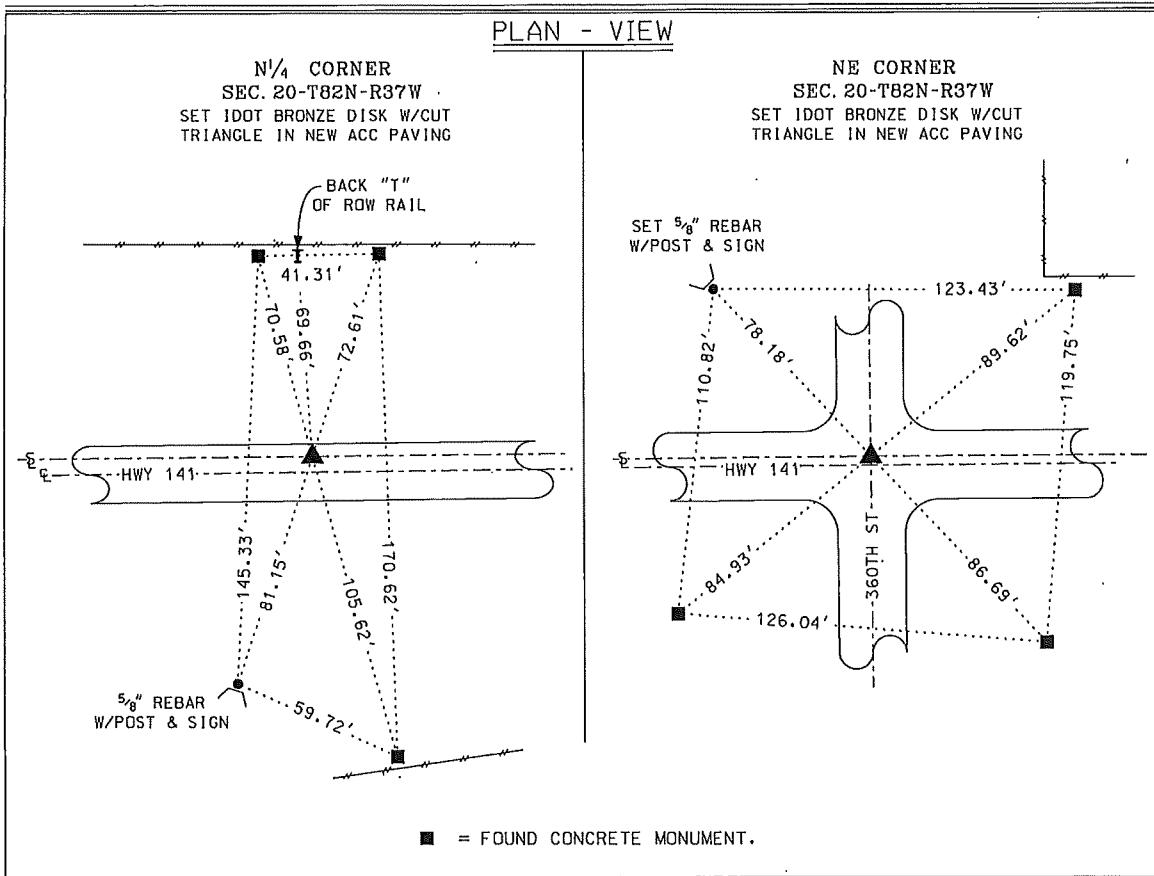
PREPARED BY - JAMES C. SAILER - IDOT, P.O.B. 987, SIOUX CITY IOWA 51102-0987 PHONE (712) 276-1451



UNITED STATES PUBLIC LAND SURVEY CORNER CERTIFICATE  
 Of Land Survey Monument Situated in Section 20,  
 Township 82 NORTH, Range 37 WEST Of The Fifth Principal Meridian,  
 CRAWFORD County, Iowa. Previously Recorded In \_\_\_\_\_  
 In The County Recorders Office.

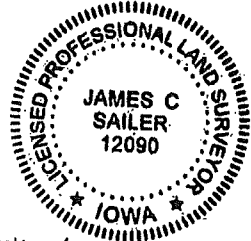
Monument Description and Remarks:

N<sup>1</sup>/<sub>4</sub> CORNER, SEC 20-T82N-R37W - FOUND 3/4" PIPE IN ACC PAVING PRIOR TO CONSTRUCTION. SET IDOT BRONZE DISK W/CUT TRIANGLE IN NEW ACC PAVING.  
 NE CORNER, SEC 20-T82N-R37W - FOUND IDOT ALUM DISK IN ACC PAVING PRIOR TO CONSTRUCTION. SET IDOT BRONZE DISK W/CUT TRIANGLE IN NEW ACC PAVING.



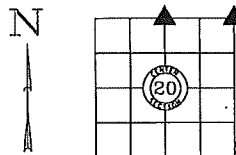
I hereby certify that this land surveying document was prepared and the related survey work was performed by me or under my direct personal supervision and that I am a duly licensed Professional Land Surveyor under the Laws of the State of Iowa.

Signature: James C. Sailer Date: 8/4/22  
 James C. Sailer - Lisc. No. 12090



My License Renewal  
 Date is December 31, 2022  
 Pages or sheets covered by this seal: 1

IOWA DEPARTMENT OF TRANSPORTATION  
 CRAWFORD COUNTY FIELD BOOK 14, PAGE 56 & 58  
 CERTIFICATE NUMBER 24-26



DATE: 07/25/2022 - BY: WRS

Corner to be Indexed			
Corner	Section	Twp	Range
N <sup>1</sup> / <sub>4</sub> CORNER	20	T82N	R37W
NE CORNER			