

Instrument #: 2015-2314
 11/06/2015 10:19:48 AM Total Pages 1
 PLC PLAT CORNER CER
 Recording Fee: \$7.00 Transfer Tax: \$0
 Denise Meeves, Recorder, Crawford County Iowa



PREPARED BY - JOSEPH P. RUESCHENBERG - SUNDQUIST ENGINEERING - 120 S. MAIN, DENISON, IOWA 51442 - PHONE (712) 263-8118

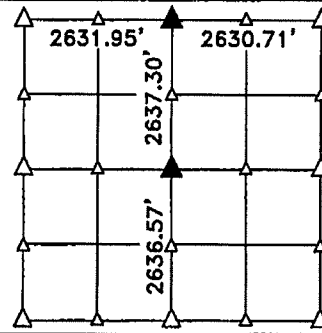
UNITED STATES PUBLIC LAND SURVEY CORNER CERTIFICATE
OF

LAND SURVEY MONUMENT SITUATED IN SECTION 21, T 82 N, R 37 W OF
 THE 5TH P.M., CRAWFORD COUNTY, IOWA.
 PREVIOUSLY RECORDED IN BOOK _____, PAGE _____, OTHER #2009-0560

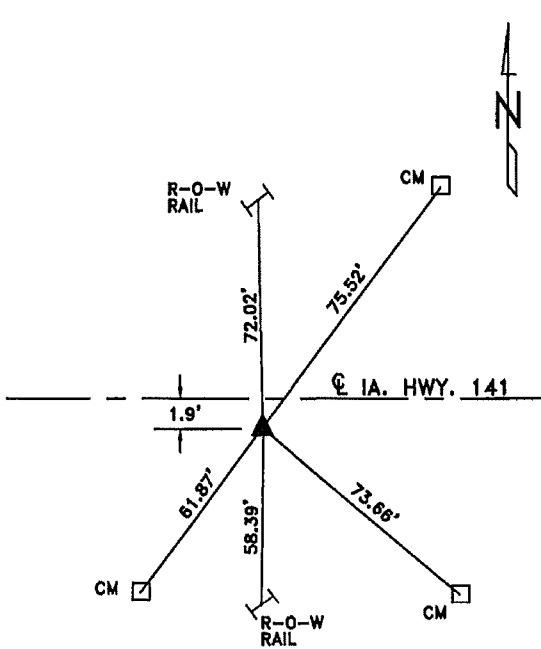
MONUMENT DESCRIPTION AND REMARKS

N1/4 CORNER - SET PK NAIL USING OLD I.D.O.T. ROAD PLANS.

CENTER - SET 5/8" DIA. X 18" IRON PIN W/ORANGE CAP #14709
 0.2' UP, SET ON LINE BETWEEN N1/4 COR. AND S1/4
 COR. OF SEC. 21 AND AT E-W FENCE LINE.

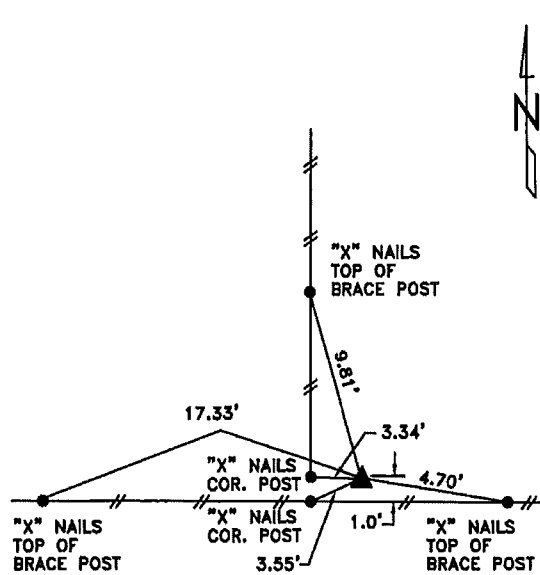


PLAN VIEW SHOWING RELATIVE LOCATION OF MONUMENT AND REFERENCE POINTS.



DISTANCES PLUMB CHAINED

N1/4 CORNER SECTION 21-82-37

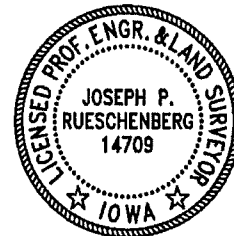


DISTANCES PLUMB CHAINED

CENTER SECTION 21-82-37

I HEREBY CERTIFY THAT THIS LAND SURVEYING DOCUMENT WAS PREPARED AND THE RELATED SURVEY WORK WAS PERFORMED BY ME OR UNDER MY DIRECT PERSONAL SUPERVISION AND THAT I AM A DULY LICENSED LAND SURVEYOR UNDER THE LAWS OF THE STATE OF IOWA.

Joseph P. Rueschenberg 11-6-2015
 JOSEPH P. RUESCHENBERG DATE
 IA LICENSE NO. 14709 EXP. DATE DECEMBER 31, 2016



SE PROJECT NO. 20309
 DRAWN BY: LLL