

INDEXED km
 FOLLOW UP _____
 PROOFED _____
 SCANNED _____

Instrument #: 2015-2313
 11/06/2015 10:19:48 AM Total Pages: 1
 PLC PLAT CORNER CER
 Recording Fee: \$7.00 Transfer Tax: \$0
 Denise Neeves, Recorder, Crawford County Iowa



PREPARED BY - JOSEPH P. RUESCHENBERG - SUNDQUIST ENGINEERING - 120 S. MAIN, DENISON, IOWA 51442 - PHONE (712) 263-8118

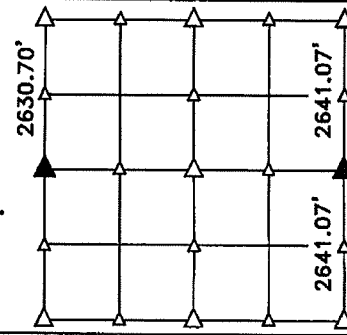
UNITED STATES PUBLIC LAND SURVEY CORNER CERTIFICATE
OF

LAND SURVEY MONUMENT SITUATED IN SECTION 21, T 82 N, R 37 W OF
 THE 5TH P.M., CRAWFORD COUNTY, IOWA.
 PREVIOUSLY RECORDED IN BOOK _____, PAGE _____, OTHER #2009-0561

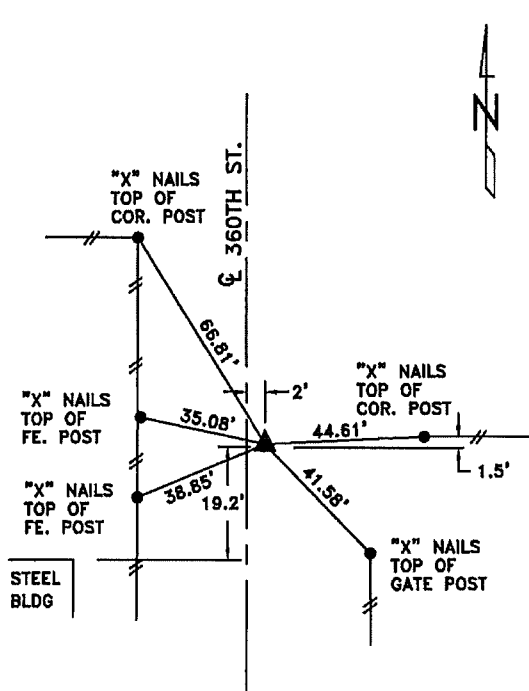
MONUMENT DESCRIPTION AND REMARKS

W1/4 CORNER - FOUND 1/2" DIA. IRON PIN 0.4' DEEP OVER CM
 2.7' DEEP.

E1/4 CORNER - SET 5/8" DIA. X 18" IRON PIN W/ORANGE CAP
 #14709 0.4' DEEP, SET ON LINE AND AT SPLIT
 BETWEEN NE CORNER AND SE CORNER OF SEC. 21.

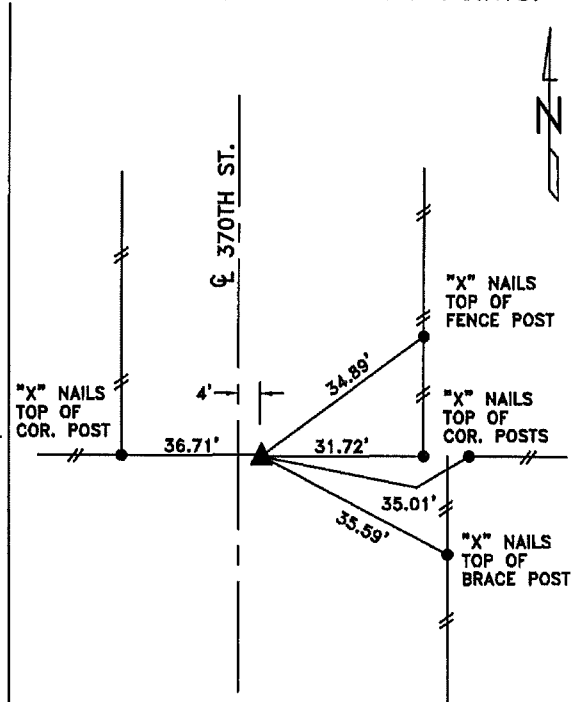


PLAN VIEW SHOWING RELATIVE LOCATION OF MONUMENT AND REFERENCE POINTS.



DISTANCES PLUMB CHAINED

W1/4 CORNER SECTION 21-82-37

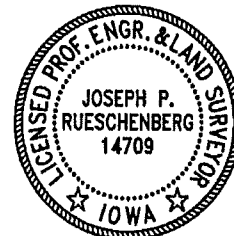


DISTANCES PLUMB CHAINED

E1/4 CORNER SECTION 21-82-37

I HEREBY CERTIFY THAT THIS LAND SURVEYING DOCUMENT WAS PREPARED
 AND THE RELATED SURVEY WORK WAS PERFORMED BY ME OR UNDER MY
 DIRECT PERSONAL SUPERVISION AND THAT I AM A DULY LICENSED LAND
 SURVEYOR UNDER THE LAWS OF THE STATE OF IOWA.

Joseph P. Rueschenberg 11-6-2015
 JOSEPH P. RUESCHENBERG DATE
 IA LICENSE NO. 14709 EXP. DATE DECEMBER 31, 2016



SE PROJECT NO. 20309
 DRAWN BY: LLL