

INDEX SM/DM  
 SCAN DM  
 FOLLOW UP DM  
 PROOF DM

Instrument #: 2022-0685  
 03/15/2022 09:25:51 AM Total Pages: 1  
 PLC PLAT COR CERT  
 Recording Fee: \$0.00 Transfer Tax: \$0  
 Denise Meeves, Recorder, Crawford County Iowa



PREPARED BY: PAUL ASSMAN-CRAWFORD COUNTY ENGINEER'S OFFICE-COURTHOUSE-DENISON, IA.-712-263-2449

## UNITED STATES PUBLIC LAND SURVEY CORNER CERTIFICATE OF

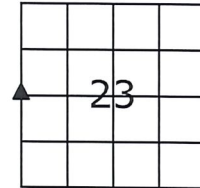
LAND SURVEY MONUMENT SITUATED IN IOWA TOWNSHIP, THE WEST 1/4 CORNER OF SECTION 23, T-82N,  
R-37W OF THE FIFTH P.M. CRAWFORD COUNTY, IOWA.

PREVIOUSLY RECORDED AS NO. 2000-2520

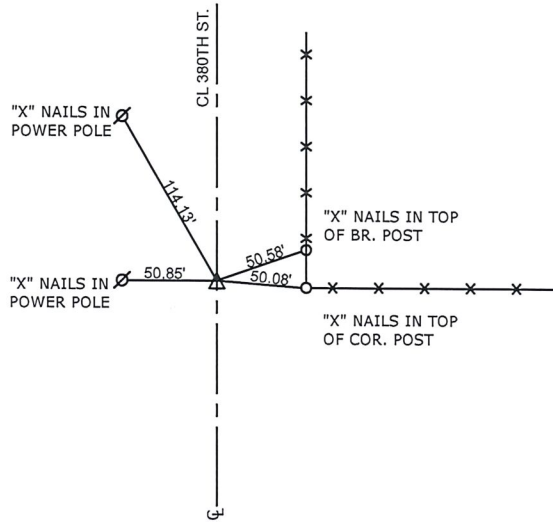
### MONUMENT DESCRIPTION AND REMARKS

WEST 1/4 CORNER SEC. 23-82-37

FOUND LEAD PLUG WITH PK NAIL  
 COUNTY RESURFACED ROAD AND SET 1/2" X 4" CARRIAGE  
 BOLT 1/4" BELOW SURFACE AND RETIED



WEST 1/4 CORNER SEC. 23-82-37



ALL TIE DISTANCES ARE HORIZONTAL DISTANCES MEASURED USING GPS

**CERTIFICATION:**

I HEREBY CERTIFY THAT THIS LAND SURVEYING DOCUMENT WAS PREPARED AND THE RELATED SURVEY WORK WAS PERFORMED BY ME OR UNDER MY DIRECT PERSONAL SUPERVISION AND THAT I AM A DULY LICENSED LAND SURVEYOR UNDER THE LAWS OF THE STATE OF IOWA.

*Paul J. Assman*  
 Signature

3/15/22  
 Date of Survey

PAUL J. ASSMAN  
 Typed Name

11982  
 L.S. No.

12-31-22  
 License Renewal Date

Pages covered by this seal 1

