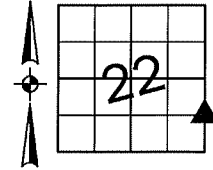


Denise Meeves RECORDER  
 Crawford County, Iowa  
 Instr. Number: 2022-0633  
 Recorded: 3/8/2022 at 1:57:36.0 PM  
 Pages 1  
 County Recording Fee: \$7.00  
 Iowa E-Filing Fee: \$3.13  
 Combined Fee: \$10.13  
 Revenue Tax:

PREPARED BY AND RETURN TO: MIKE SCHULTE, SCHULTE SURVEYING, INC., 2003 390TH STREET, WESTSIDE, IA 51467 (712) 790-3489

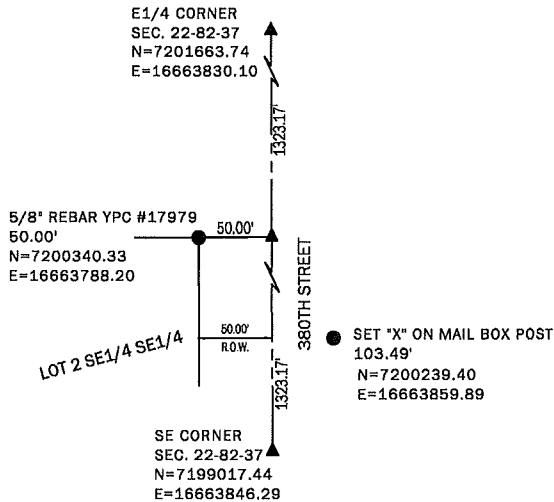
**UNITED STATES PUBLIC LAND SURVEY CORNER CERTIFICATE OF**  
 LAND SURVEY MONUMENTS SITUATED IN SECTION 22, TOWNSHIP 82 NORTH, RANGE 37 WEST, OF THE FIFTH  
 PRINCIPAL MERIDIAN, CRAWFORD COUNTY, IOWA. PREVIOUSLY RECORDED IN SEE BELOW IN COUNTY  
(book, page instrument number)  
 RECORDER'S OFFICE.



**NORTHEAST CORNER SE1/4 SE1/4**  
 SET MAG NAIL IN ROAD

N=7200340.59 E=16663838.20

NO PREVIOUS RECORD OF CORNER. SET MAG NAIL BY SINGLE PROPORTION.  
 THIS CERTIFICATE IS BEING FILED BECAUSE THERE IS NOT ONE OF RECORD.



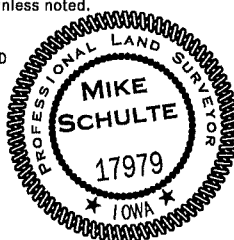
**LIST CORNERS TO BE INDEXED**

CORNER	SECTION	TWP	RANGE
NE CORNER SE1/4 SE1/4	22	82	37
NW CORNER SW1/4 SW1/4	23	82	37

\*All distances are measured horizontally unless noted.

I HEREBY CERTIFY THAT THIS LAND SURVEYING DOCUMENT WAS  
 PREPARED BY ME OR UNDER MY DIRECT PERSONAL SUPERVISION AND  
 THAT I AM A DULY LICENSED PROFESSIONAL LAND SURVEYOR UNDER  
 THE LAWS OF THE STATE OF IOWA.

*Mike Schulte*  
 MIKE SCHULTE  
 LICENSE NUMBER: 17979  
 LICENSE RENEWAL DATE IS DECEMBER 31, 2021  
 PAGES COVERED BY THIS SEAL: 1 OF 1



**BASIS OF BEARING**  
 IaRCS ZONE 6 - US SURVEY FEET  
 IaRTN DERIVED - NAD83(2011)(EPOCH 2010.00)

**SCHULTE SURVEYING, INC.**

DRAWN BY: MLS  
 PROJ NUMBER: 21-061