

INDEX Sm  
 SCAN \_\_\_\_\_  
 FOLLOW UP \_\_\_\_\_  
 PROOF \_\_\_\_\_

Instrument #: 2022-1946  
 08/12/2022 11:49:18 AM Total Pages: 1  
 PL C PLAT COR CERT  
 Recording Fee: \$7.00 Transfer Tax: \$0  
 Denise Reeves, Recorder, Crawford County Iowa



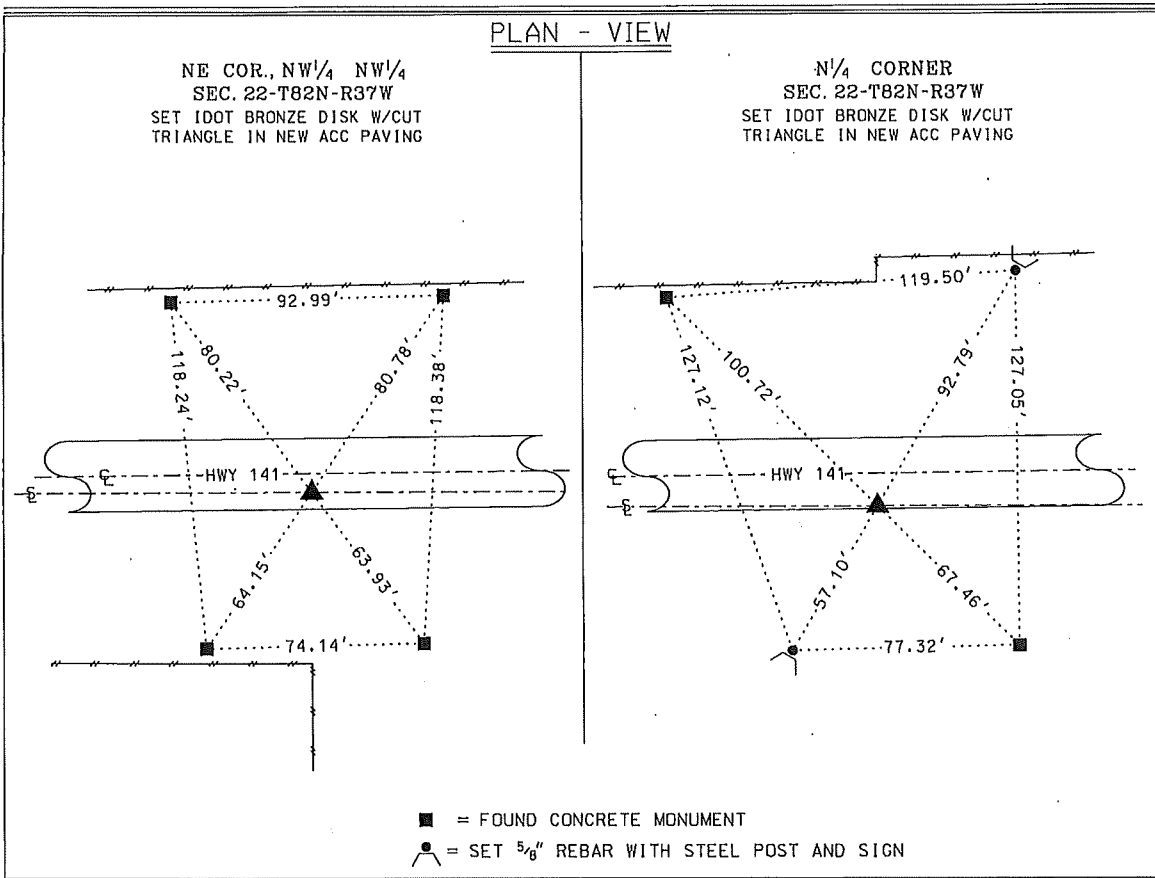
PREPARED BY - JAMES C. SAILER - IDOT, P.O.B. 987, SIOUX CITY IOWA 51102-0987 PHONE (712) 276-1451



UNITED STATES PUBLIC LAND SURVEY CORNER CERTIFICATE  
 Of Land Survey Monument Situated in Section 22,  
 Township 82 NORTH, Range 37 WEST Of The Fifth Principal Meridian,  
 CRAWFORD County, Iowa. Previously Recorded In \_\_\_\_\_  
 NE COR., 2004-1706 In The County Recorders Office.

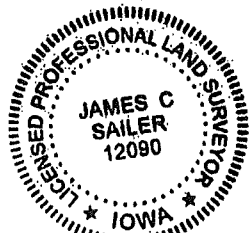
Monument Description and Remarks:

NE COR., NW<sup>1</sup>/<sub>4</sub> NW<sup>1</sup>/<sub>4</sub> SEC 22-T82N-R37W - FOUND 3/4" PIPE IN ACC PAVING PRIOR TO CONSTRUCTION. SET IDOT BRONZE DISK W/CUT TRIANGLE IN NEW ACC PAVING.  
 N<sup>1</sup>/<sub>4</sub> CORNER, SEC 22-T82N-R37W - FOUND 3/4" PIPE IN ACC PAVING PRIOR TO CONSTRUCTION. SET IDOT BRONZE DISK W/CUT TRIANGLE IN NEW ACC PAVING.



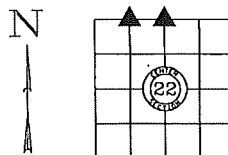
I hereby certify that this land surveying document was prepared and the related survey work was performed by me or under my direct personal supervision and that I am a duly licensed Professional Land Surveyor under the Laws of the State of Iowa.

Signature: James C. Sailer 8/4/22 Date  
 James C. Sailer - Lisc. No. 12090



My License Renewal  
 Date is December 31, 2022  
 Pages or sheets covered by this seal: \_\_\_\_\_

IOWA DEPARTMENT OF TRANSPORTATION  
 CRAWFORD COUNTY FIELD BOOK 14, PAGE 62-63  
 CERTIFICATE NUMBER 24-28



DATE: 07/25/2022 - BY: WRS

Corner to be Indexed			
Corner	Section	Twp	Range
NE COR., NW <sup>1</sup> / <sub>4</sub> NW <sup>1</sup> / <sub>4</sub>	22	T82N	R37W
N <sup>1</sup> / <sub>4</sub> CORNER			