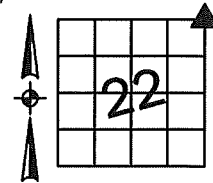


Sara Meseck, RECORDER
 Crawford County, Iowa
 Instr. Number: 2023-0360
 Recorded: 2/27/2023 at 11:27:59.0 AM
 Pages 1
 County Recording Fee: \$7.00
 Iowa E-Filing Fee: \$3.13
 Combined Fee: \$10.13
 Revenue Tax:

PREPARED BY AND RETURN TO: MIKE SCHULTE, SCHULTE SURVEYING, INC., 2003 390TH STREET, WESTSIDE, IA 51467 (712) 790-3489

UNITED STATES PUBLIC LAND SURVEY CORNER CERTIFICATE OF
 LAND SURVEY MONUMENTS SITUATED IN SECTION 22, TOWNSHIP 82 NORTH, RANGE 37 WEST, OF THE FIFTH
 PRINCIPAL MERIDIAN, CRAWFORD COUNTY, IOWA. PREVIOUSLY RECORDED IN SEE BELOW IN COUNTY
(book, page instrument number)
 RECORDER'S OFFICE.



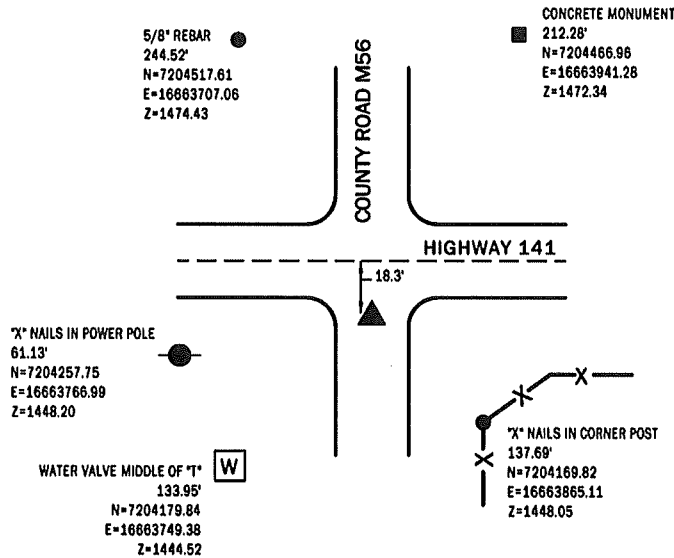
NE CORNER

FND CARRIAGE BOLT

N=7204297.46 E=16663813.47 Z=1449.98

USED CERTIFICATE RECORDED IN FEE BOOK 2011-0892 AND A METAL LOCATER TO FIND A CARRIAGE BOLT SOUTH OF THE DRIVE LANE OF HIGHWAY 141. VERIFIED WITH 3 REMAINING TIES.

THIS CERTIFICATE IS BEING FILED TO UPDATE THE REFERENCE TIES.



LIST CORNERS TO BE INDEXED

CORNER	SECTION	TWP	RANGE
NE CORNER	22	82	37
SE CORNER	15	82	37
SW CORNER	14	82	37
NW CORNER	23	82	37

*All distances are measured horizontally unless noted.

I HEREBY CERTIFY THAT THIS LAND SURVEYING DOCUMENT WAS PREPARED BY ME OR UNDER MY DIRECT PERSONAL SUPERVISION AND THAT I AM A DULY LICENSED PROFESSIONAL LAND SURVEYOR UNDER THE LAWS OF THE STATE OF IOWA.

Mike Schulte
 MIKE SCHULTE
 LICENSE NUMBER: 17979
 LICENSE RENEWAL DATE IS DECEMBER 31, 2023
 PAGES COVERED BY THIS SEAL: 1 OF 1



BASIS OF BEARING

16RCS ZONE 6 - US SURVEY FEET
 16RTN DERIVED - NAD83(2011)(EPOCH 2010.00)

SCHULTE SURVEYING, INC.

DRAWN BY: MLS/SLG
 PROJ NUMBER: 23-013