

AD

Crawford County Recorder
 Denise Meeves
Fee Book 2011-2752
 11/23/2011 @11:55AM
 PLC PLAT CORNER CER
 Book: _____ Page: # Pages: 1
 Total Fees: \$7.00

MYRON G. DARINGER PLS, JEO CONSULTING GROUP, INC., 724 SIMON AVENUE, CARROLL, IOWA 51401, 712-782-9711

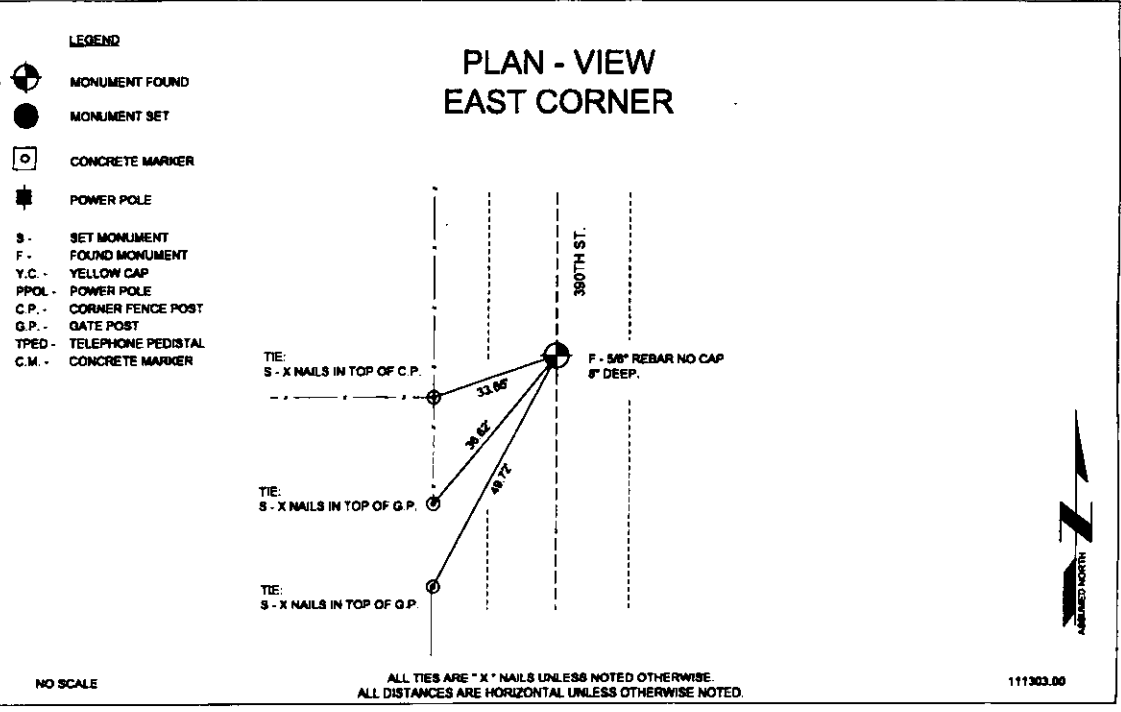
UNITED STATES PUBLIC LAND SURVEY CORNER CERTIFICATE

LAND SURVEY MONUMENT SITUATED IN SECTION 23
 TOWNSHIP 82 NORTH, RANGE 37 WEST, OF THE 5TH P.M.
 CRAWFORD COUNTY, IOWA
MONUMENT DESCRIPTION AND REMARKS:

REASON FOR SECTION CORNER CERTIFICATE:
 ___ THERE IS NO CERTIFICATE FOR THE CORNER ON FILE WITH THE RECORDER OF COUNTY IN WHICH THE CORNER IS LOCATED.
 ___ THE SURVEYOR IN RESPONSIBLE CHARGE OF THE LAND SURVEYING ACCEPTS A CORNER POSITION WHICH DIFFERS FROM THAT SHOWN IN THE PUBLIC RECORDS OF THE COUNTY IN WHICH THE CORNER IS LOCATED.
 ___ THE CORNER MONUMENT IS REPLACED OR MODIFIED IN ANY WAY.
X THE REFERENCE TIES IN AN EXISTING PUBLIC RECORD ARE INCORRECT OR MISSING.
 ___ OTHER

DESCRIPTION OF MONUMENT:
 MATERIAL - 5/8" REBAR
 CAP COLOR - NONE
 CAP NOTATION - NONE
 DEPTH - 8" DEEP
 OTHER - 2' NORTH OF EAST - WEST FENCE LINE THAT IS LOCATED ON THE WEST SIDE OF 390TH STREET.

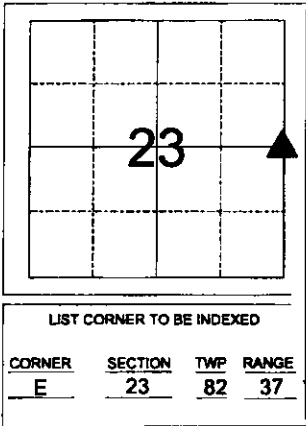
EXTENT OF SEARCH:
 3 FOOT RADIUS FROM A POINT CALCULATED FROM RECORDED TIES.



I HEREBY CERTIFY THAT THIS LAND SURVEYING DOCUMENT WAS PREPARED AND THE RELATED SURVEY WORK WAS PERFORMED BY ME OR UNDER MY DIRECT PERSONAL SUPERVISION AND THAT I AM A DULY LICENSED LAND SURVEYOR UNDER THE LAWS OF THE STATE OF IOWA.

Myron Daringer 11/24/11
 SIGNATURE DATE
 MYRON G. DARINGER
 PRINTED OR TYPED NAME
 19758
 MY LICENSE RENEWAL DATE IS: DECEMBER 31, 2011
 PAGES OR SHEETS COVERED BY THIS SEAL:
 THIS SHEET

DRAWN BY: DGM QADC: MGD



JEO
 Consulting Group, Inc.
 712.782.9711
 Carroll, Iowa
 724 Simon Ave.
Corporate Office
 402.443.4861
 PO Box 307
 Wahoo, Nebraska 68086

Branch Offices
 Hastings, Nebraska
 402.482.8857

Lincoln, Nebraska
 402.425.5090

Nebraska City, Nebraska
 402.873.9708

Norfolk, Nebraska
 402.371.6418

Grand Island, Nebraska
 402.391.7459

Omaha, Nebraska
 402.534.3880
 www.jeo.com