

Crawford County Recorder
 Denise Meeves
Fee Book 2011-2751
 11/23/2011 011:53AM
 PLAT CORNER CER # Pages: 1
 Book: _____
 Total Fees: \$7.00

MYRON G. DARINGER PLS, JEO CONSULTING GROUP, INC., 724 SIMON AVENUE, CARROLL, IOWA 51401, 712-792-0711

UNITED STATES PUBLIC LAND SURVEY CORNER CERTIFICATE

LAND SURVEY MONUMENT SITUATED IN SECTION 23
 TOWNSHIP 82 NORTH, RANGE 37 WEST, OF THE 5TH P.M.
 CRAWFORD COUNTY, IOWA
MONUMENT DESCRIPTION AND REMARKS:

REASON FOR SECTION CORNER CERTIFICATE:

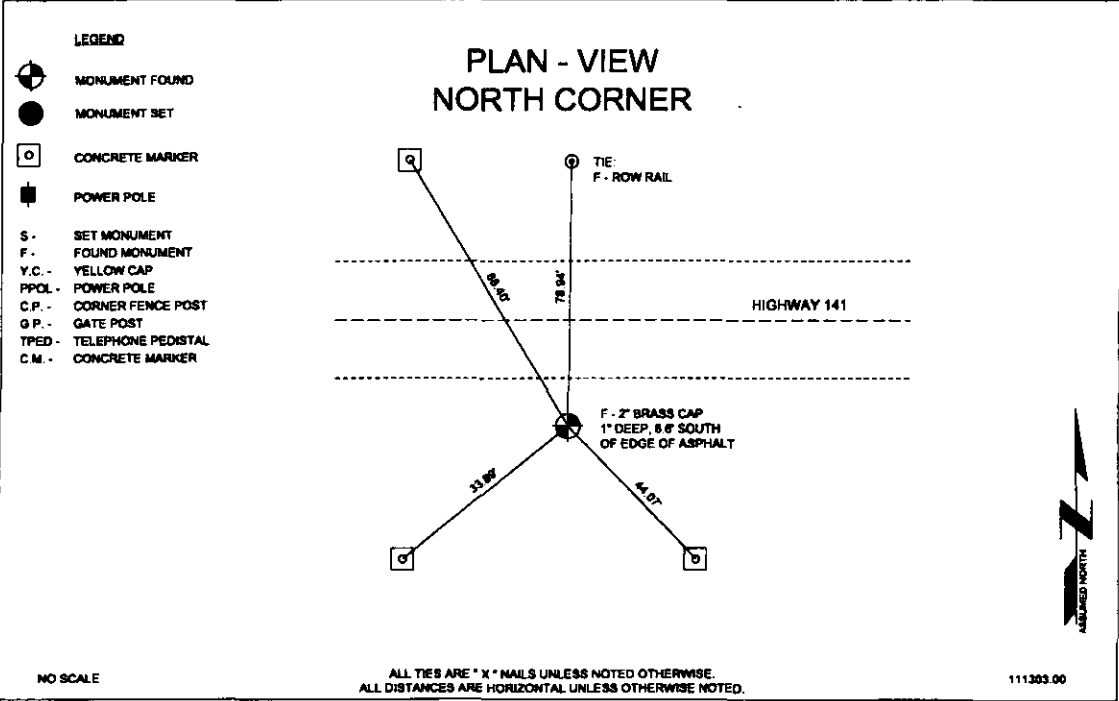
THERE IS NO CERTIFICATE FOR THE CORNER ON FILE WITH THE RECORDER OF COUNTY IN WHICH THE CORNER IS LOCATED.
 THE SURVEYOR IN RESPONSIBLE CHARGE OF THE LAND SURVEYING ACCEPTS A CORNER POSITION WHICH DIFFERS FROM THAT SHOWN IN THE PUBLIC RECORDS OF THE COUNTY IN WHICH THE CORNER IS LOCATED.
 THE CORNER MONUMENT IS REPLACED OR MODIFIED IN ANY WAY.
 THE REFERENCE TIES IN AN EXISTING PUBLIC RECORD ARE INCORRECT OR MISSING.
 OTHER

DESCRIPTION OF MONUMENT:

MATERIAL - 2" DIA. BRASS CAP
 CAP COLOR - BRASS
 CAP NOTATION - 23/24
 DEPTH - 1" DEEP
 OTHER - MONUMENT IS 8.6" SOUTH OF THE SOUTH EDGE OF ASPHALT ON HIGHWAY 141.
 LOCATED NEAR STA. 810+00

EXTENT OF SEARCH:

3 FOOT RADIUS FROM A POINT CALCULATED FROM RECORDED TIES.



I HEREBY CERTIFY THAT THIS LAND SURVEYING DOCUMENT
 WAS PREPARED AND THE RELATED SURVEY WORK WAS
 PERFORMED BY ME OR UNDER MY DIRECT PERSONAL
 SUPERVISION AND THAT I AM A DULY LICENSED LAND
 SURVEYOR UNDER THE LAWS OF THE STATE OF IOWA.

SIGNATURE: *Myron Daringer* DATE: 11/21/11
 MYRON G. DARINGER
 PRINTED OR TYPED NAME
 19758
 MY LICENSE RENEWAL DATE IS: DECEMBER 31, 2011
 PAGES OR SHEETS COVERED BY THIS SEAL:
 THIS SHEET

DRAWN BY: DGM QA/QC: MGD



712.792.0711
 Carroll, Iowa
 724 Simon Ave.
Corporate Office
 402.442.4067
 PO Box 207
 Wahoo, Nebraska 68086
Branch Offices
 Hastings, Nebraska
 402.462.0087
 Lincoln, Nebraska
 402.439.3080
 Nebraska City, Nebraska
 402.873.0766
 Norfolk, Nebraska
 402.371.0410
 Grand Island, Nebraska
 402.397.7439
 Omaha, Nebraska
 402.534.3680
 www.jeo.com