

INDEXED km
 FOLLOW UP _____
 PROOFED _____
 SCANNED _____

Instrument #: 2016-0673
 04/04/2016 12:48:48 PM Total Pages: 1
 PLC PLAT CORNER CER
 Recording Fee: \$7.00 Transfer Tax: \$0
 Denise Meeves, Recorder, Crawford County Iowa



PREPARED BY & RETURN TO MIKE SCHULTE, SNYDER & ASSOCIATES, INC. 2003 390TH STREET, WESTSIDE, IOWA 51467 (515) 669-1019

UNITED STATES PUBLIC LAND SURVEY CORNER CERTIFICATE OF

Land Survey Monuments situated in Section 23, Township 82N, Range 37W, of the Fifth Principal Meridian, CRAWFORD County, Iowa.
 Previously recorded in INST 2003-2681 in County Recorder's Office.
 (book, page, document number, ect.)

(Show reason for preparing this certificate, the evidence and detailed procedures used in establishing the corner positions and monumentation found or placed.)

Monument Description and Remarks:

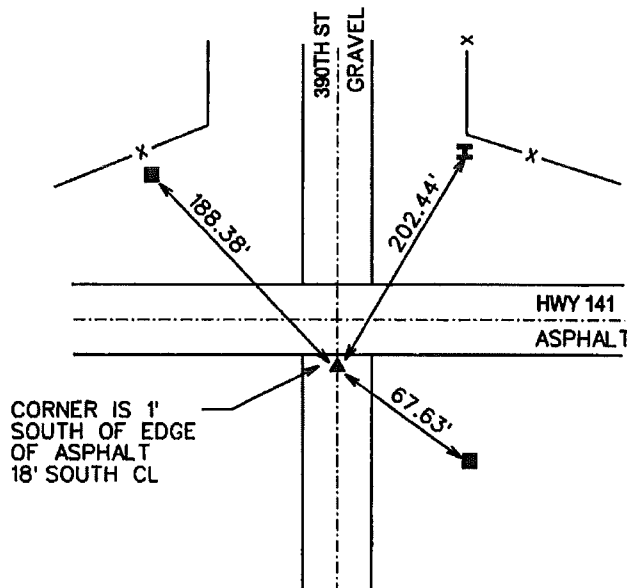
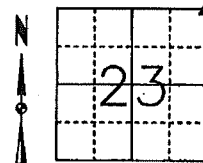
NE CORNER
USED PREVIOUSLY RECORDED TIES TO FIND SEARCH AREA FOR CORNER. MAGNETIC READING WAS SMALL BUT FOUND 1" PIPE 2" DEEP. LOCATED PIPE PULLED AND FOUND A CRAWFORD COUNTY WPA CONCRETE MONUMENT 10" DEEP. LOCATED CM AND LAID 1" PIPE OVER CM AND SET 6"X 1/2" REBAR WITH YPC 17979 OVER CMP. CORNER IS BEING RETIED DUE TO UPGRADE TO MONUMENT.

Plan-View

(Show a minimum of three reference ties to durable physical objects, relevant monuments and physical conditions that will enable recovery of the corner.)

IdRCS ZONE 6; US SURVEY FT
 NAD83(2011)(EPOCH 2010.00)
 IOWA RTN DERIVED
 N: 7204286.19
 E: 16669053.28

NE CORNER
 FOUND CM
 SET 1/2" REBAR YPC 17979 OVER



I hereby certify that this land surveying document was prepared and the related survey work was performed by me or under my direct personal supervision and that I am a duly licensed Professional Land Surveyor under the laws of the State of Iowa.
Mike Schulte 2016-04-01
 Mike Schulte, PLS Date

License Number: 17979
 My License Renewal Date is December 31, 2017
 Pages or sheets covered by this seal:
 SHEET 1 OF 1

| List Corners to be Indexed | | | |
|----------------------------|---------|-----|-------|
| Corners | Section | Twp | Range |
| NE COR | 23 | 82 | 37 |
| NW COR | 24 | 82 | 37 |
| SW COR | 13 | 82 | 37 |
| SE COR | 14 | 82 | 37 |