

FILED DENISON, IOWA  
CRAWFORD COUNTY

INDEXED \_\_\_\_\_  
FOLLOW UP \_\_\_\_\_  
PROPOSED \_\_\_\_\_

2003 JUL 15 AM 9:39

INST. NO. 2003-2681  
DENISE MEEVES, RECORDER  
*Denise Meeves*  
FEB. 11.00

This document prepared by: Semke & Associates - 712-792-2276  
Michael G. Semke, L.S. #10318 - 716 N. Crawford - Carroll, Iowa

UNITED STATES PUBLIC LAND SURVEY CORNER CERTIFICATE  
OF

Land Survey Monuments situated in Section 13, Township 82 North, Range 37  
West, of the Fifth Principal Meridian, Crawford County, Iowa.  
Previously recorded in Book \_\_\_\_\_, Page \_\_\_\_\_ in County Recorder's Office.

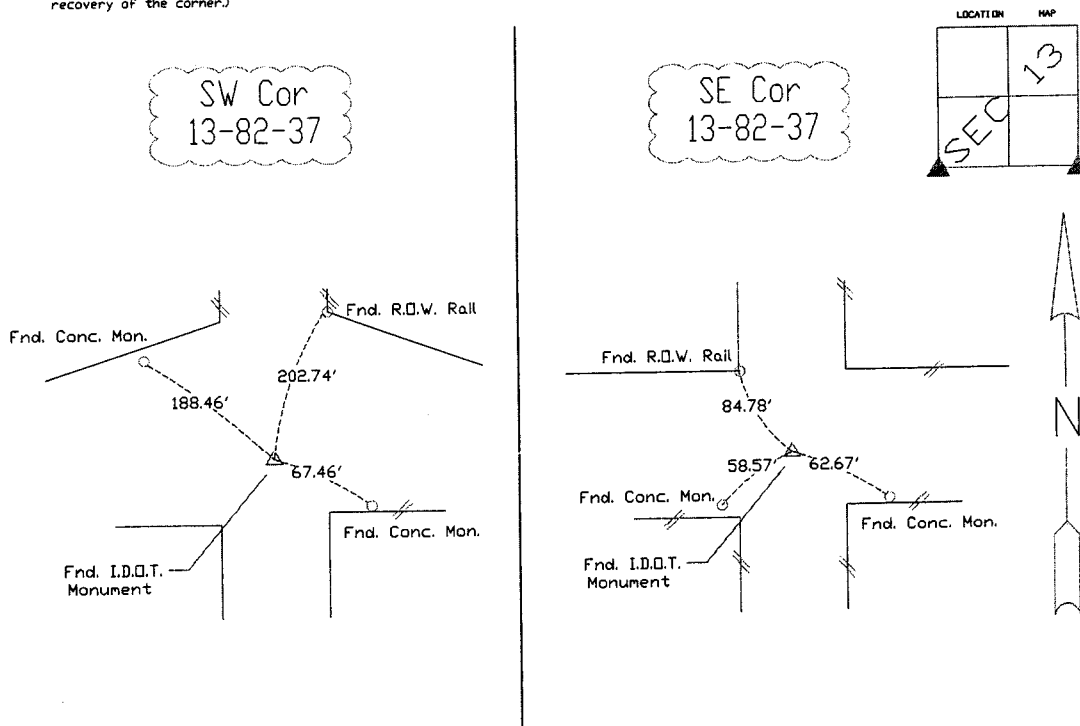
(Show reason for preparing this certificate, the evidence and detailed procedures used in establishing the corner positions and monumentation found or placed.)

SW Cor \_\_\_\_\_ Fnd. I.D.O.T. Monument in Gravel 17.7' So.  
of CL Tangent as per I.D.O.T. Plans

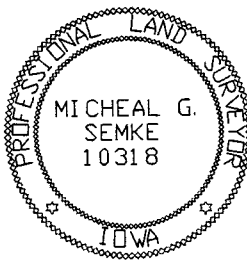
SE Cor \_\_\_\_\_ Fnd. I.D.O.T. Monument in Gravel 17.2' So.  
of CL as per I.D.O.T. Plans

PLAN - VIEW

(Show a minimum of three reference ties to durable physical objects, relevant monuments and physical conditions that will enable recovery of the corner.)



Note: All ties slope chained unless noted.



I HEREBY CERTIFY THAT THIS CORNER CERTIFICATE  
WAS PREPARED BY ME OR UNDER MY DIRECT PERSONAL  
SUPERVISION AND THAT I AM A PROFESSIONAL LAND  
SURVEYOR UNDER THE LAWS OF THE STATE OF IOWA.  
MY REGISTRATION IS SUBJECT TO RENEWAL 12-31-03.

7/14/03  
DATE

*M. G. Semke*  
MICHAEL G. SEMKE, RLS NO 10318

List Corners to be Indexed

Corners	Section	Twp	Range
SW Corner	13	82	37
NW Corner	24	82	37
NE Corner	23	82	37
SE Corner	14	82	37

SE Corner	13	82	37
NE Corner	24	82	37