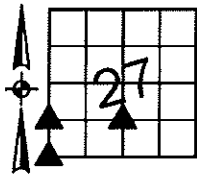


Sara Meseck, RECORDER
 Crawford County, Iowa
 Instr. Number: 2026-0419
 Recorded: 3/3/2026 at 3:59:25.0 PM
 Pages 1
 County Recording Fee: \$7.00
 Iowa E-Filing Fee: \$3.13
 Combined Fee: \$10.13
 Revenue Tax:

PREPARED BY AND RETURN TO: MIKE SCHULTE, SCHULTE SURVEYING, INC., 2003 390TH STREET, WESTSIDE, IA 51467 (712) 790-3489

UNITED STATES PUBLIC LAND SURVEY CORNER CERTIFICATE OF
 LAND SURVEY MONUMENTS SITUATED IN SECTION 27, TOWNSHIP 82 NORTH, RANGE 37 WEST, OF THE FIFTH
 PRINCIPAL MERIDIAN, CRAWFORD COUNTY, IOWA. PREVIOUSLY RECORDED IN SEE BELOW IN COUNTY
(book, page instrument number)



NW CORNER SW1/4 SW1/4
 SET 5/8" REBAR YPC #17979

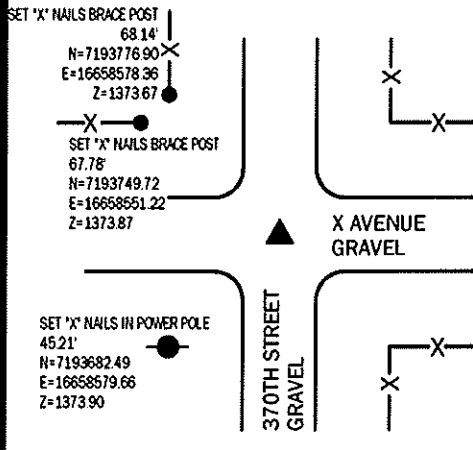
N=7195033.99 E=16658606.06 Z=1402.60
 NO RECORD OF CORNER FOUND. SET 5/8" REBAR YPC #17979 ON
 LINE BETWEEN W1/4 CORNER AND SW CORNER, AT FENCE LINE
 EAST. VERIFIED WITH SURROUNDING FIELD EVIDENCE.
 THIS CERTIFICATE IS BEING FILED DUE TO NONE OF RECORD.

SW CORNER

FND 5/8" REBAR 8" DEEP.

N=7193715.99 E=16658610.01 Z=1372.44

USED CERTIFICATE RECORDED IN FEE BOOK 2010-2347 AND A
 METAL LOCATOR TO FIND A 5/8" REBAR 8" DEEP. VERIFIED WITH
 SURROUNDING FIELD EVIDENCE.
 THIS CERTIFICATE IS BEING FILED TO UPDATE THE REFERENCE TIES.



SET 'X' NAILS IN POWER POLE
 38.25'
 N=7195054.00
 E=16658573.46
 Z=1401.04

NE CORNER CONC. PAD
 32.05'
 N=7195043.42
 E=16658575.42
 Z=1402.23

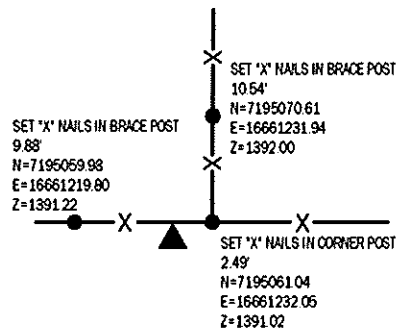
SE CORNER CONC. PAD
 30.82'
 N=7195028.17
 E=16658575.79
 Z=1402.34

370TH STREET
 GRAVEL

NE CORNER SE1/4 SW1/4
 SET 5/8" REBAR YPC #17979

N=7195060.31 E=16661229.68 Z=1374.05

NO RECORD OF CORNER. SEARCHED AREA, FOUND NOTHING. SET 5/8"
 REBAR YPC #17979 ON LINE WITH CENTER AND S1/4 CORNER AT FENCES
 E-W. NOTE: POINT LANDS EAST OF FENCE NORTH, YET IN-LINE WITH
 TRANSMISSION POLES. I AM SUSPICIOUS THE FENCE WAS RECONSTRUCTED
 AND PLACED EAST OF THE POWER POLES FOR CONVENIENCE.
 THIS CERTIFICATE IS BEING FILED DUE TO NONE OF RECORD.



LIST CORNERS TO BE INDEXED

CORNER	SECTION	TWP	RANGE
SW CORNER	27	82	37
NW CORNER	34	82	37
NE CORNER	33	82	37
SE CORNER	28	82	37

NE CORNER SE1/4 SW1/4	27	82	37
NW CORNER SW1/4 SW1/4	27	82	37
NE CORNER NE1/4 SE1/4	28	82	37

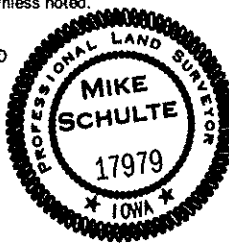
BASIS OF BEARING

IA RCS ZONE 6 - US SURVEY FEET
 IARIN DERIVED - NAD83(2011) EPOCH 2010.00

*All distances are measured horizontally unless noted.

I HEREBY CERTIFY THAT THIS LAND SURVEYING DOCUMENT WAS
 PREPARED BY ME OR UNDER MY DIRECT PERSONAL SUPERVISION AND
 THAT I AM A DULY LICENSED PROFESSIONAL LAND SURVEYOR UNDER
 THE LAWS OF THE STATE OF IOWA.

Mike Schulte
 MIKE SCHULTE
 LICENSE NUMBER 17979
 LICENSE RENEWAL DATE IS DECEMBER 31, 2027
 PAGES COVERED BY THIS SEAL: 1 OF 1



SCHULTE SURVEYING, INC.

DRAWN BY: SLG
 PROJ NUMBER: 26-033