

Crawford County Recorder  
 Denise Meeves  
**Fee Book 2010-2348**  
 10/27/2010 @03:25PM  
 PLC PLAT CORNER CER  
 Book: Page: # Pages: 1  
 Total Fees: \$9.00

RECORDED  
 INDEXED  
 FILED  
 OCT 27 2010  
 CRAWFORD COUNTY IOWA

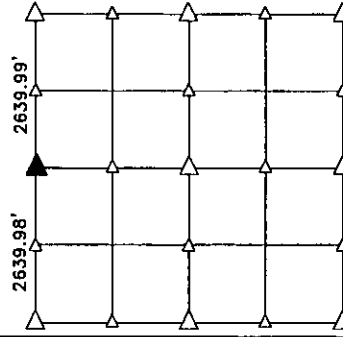
PREPARED BY - TERENCE E. CRAWFORD - SUNDQUIST ENGINEERING - 120 S. MAIN, DENISON, IOWA 51442 - PHONE (712) 263-8118

**UNITED STATES PUBLIC LAND SURVEY CORNER CERTIFICATE  
 OF**

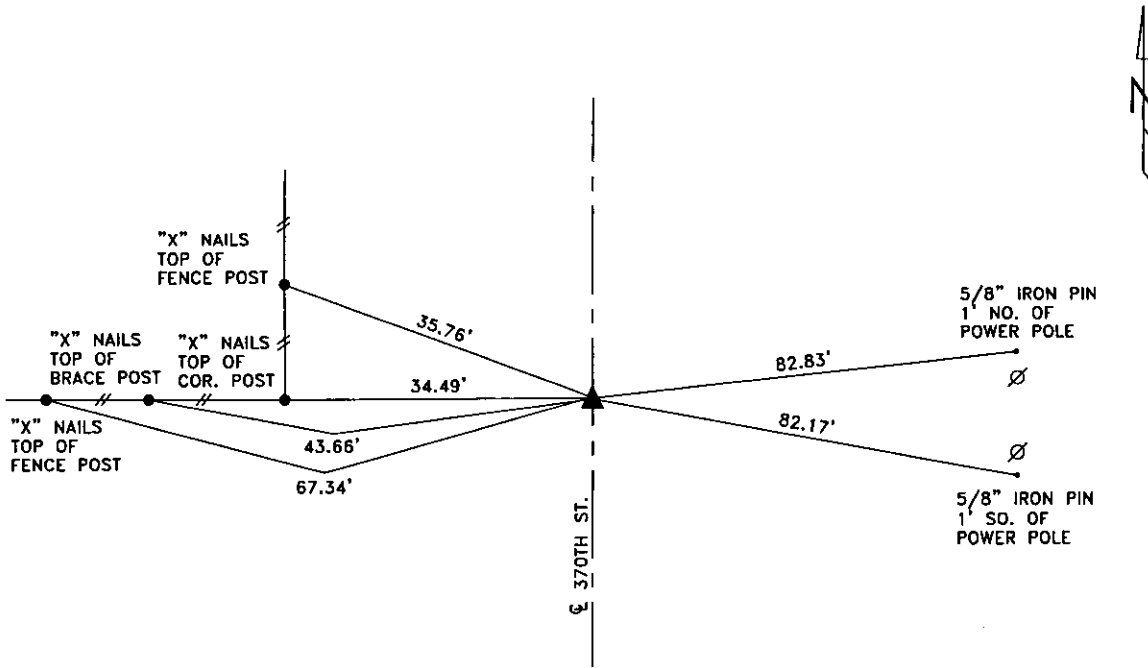
LAND SURVEY MONUMENT SITUATED IN SECTION 27, T 82 N, R 37 W OF  
 THE 5TH P.M., CRAWFORD COUNTY, IOWA.  
 PREVIOUSLY RECORDED IN BOOK \_\_\_\_\_, PAGE \_\_\_\_\_, OTHER \_\_\_\_\_

**MONUMENT DESCRIPTION AND REMARKS**

W1/4 CORNER - SET 5/8" DIA. X 18" IRON PIN 0.5' DEEP, SET ON  
 SPLIT AND LINE BETWEEN NW COR. & SW COR. OF  
 SEC. 27.



**PLAN VIEW SHOWING RELATIVE LOCATION OF MONUMENT AND REFERENCE POINTS.**



DISTANCES PLUMB CHAINED

W1/4 CORNER SECTION 27-82-37

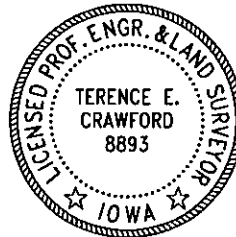
I HEREBY CERTIFY THAT THIS LAND SURVEYING DOCUMENT WAS PREPARED  
 AND THE RELATED SURVEY WORK WAS PERFORMED BY ME OR UNDER MY  
 DIRECT PERSONAL SUPERVISION AND THAT I AM A DULY LICENSED LAND  
 SURVEYOR UNDER THE LAWS OF THE STATE OF IOWA.

*Terence E. Crawford*  
 TERENCE E. CRAWFORD  
 IA LICENSE NO. 8893

OCT 27 2010

DATE

EXP. DATE DECEMBER 31, 2011



SE PROJECT NO. 23310  
 DRAWN BY: LLL