



INDEXED JK  
FOLLOW UP JK  
PROOFED JK  
SCANNED JK

PREPARED BY AND RETURN TO: JEFFREY M. KRUEGER P.L.S., KUEHL AND PAYER LTD., 423 WEST MAIN ST., SAC CITY, IA 50583 PH. (712)662-7859

### UNITED STATES PUBLIC LAND SURVEY CORNER CERTIFICATE OF

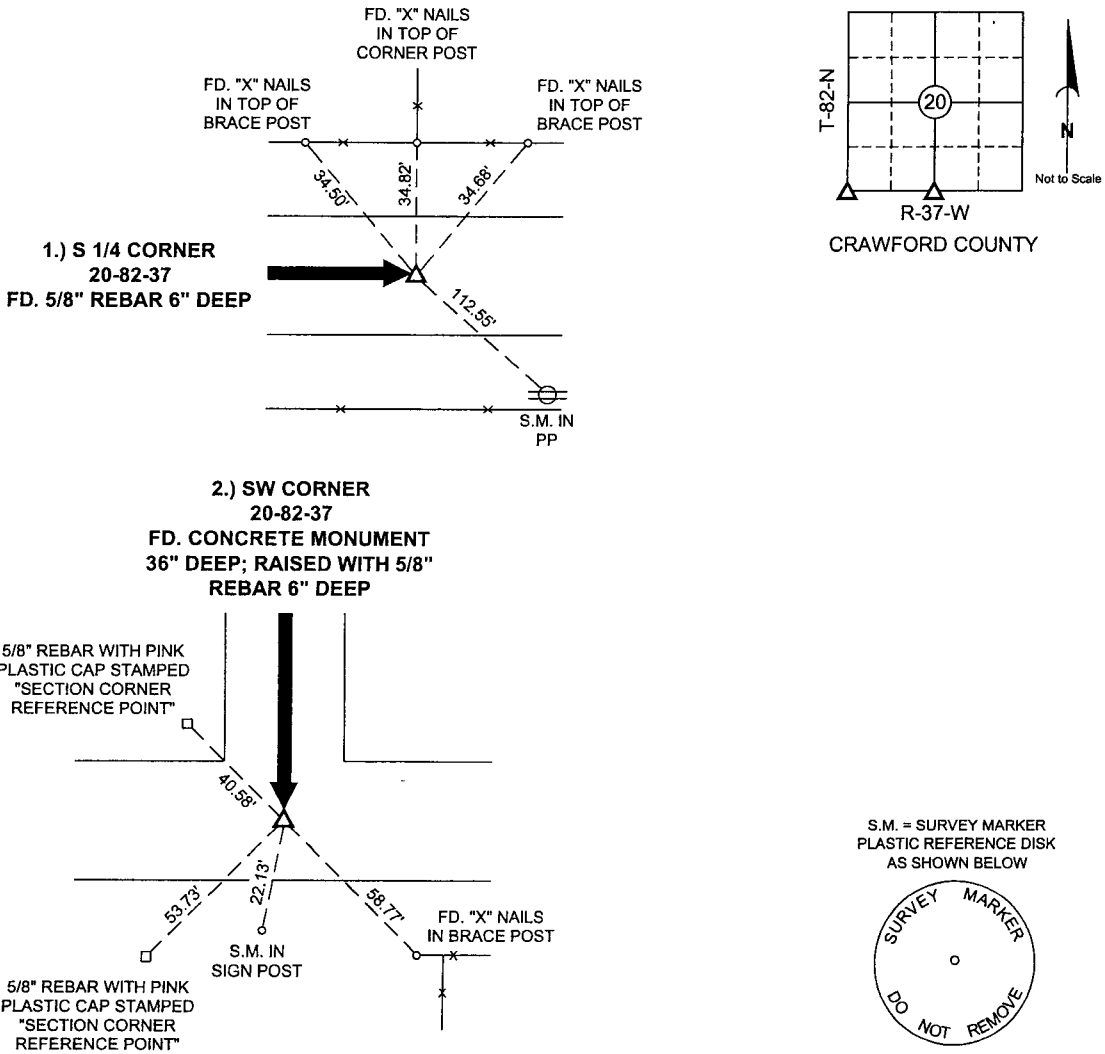
LAND SURVEY MONUMENTS SITUATED IN SECTION 20, TOWNSHIP 82 NORTH,  
RANGE 37 WEST, OF THE 5TH PRINCIPAL MERIDIAN, CRAWFORD COUNTY, IOWA.

PREVIOUSLY RECORDED IN BOOK \_\_\_\_\_ PAGE \_\_\_\_\_

MONUMENT DESCRIPTION AND REMARKS:

- 1.) S 1/4 CORNER 20-82-37: FD. 5/8" REBAR 6" DEEP
- 2.) SW CORNER 20-82-37: FD. CONCRETE MONUMENT 36" DEEP; RAISED WITH 5/8" REBAR 6" DEEP

#### PLAN - VIEW



I hereby certify that this land surveying document was prepared and the related survey work was performed by me or under my direct personal supervision and that I am a duly licensed Land Surveyor under the laws of the State of Iowa.

Jeffrey M. Krueger  
Jeffrey M. Krueger  
License Number 16749  
My license renewal date is December 31, 2006  
Pages covered by this seal 1  
Date: 7-17-2006

#### List Corners to be Indexed

Corners	Section	Township	Range
1) S 1/4	20	82	37
2) SW	20	82	37