

2000 JA 24 PM 3:03

INST. NO. 100-0182

DENISE MEEVES, RECORDER

Denise Meeves

FEE notes

PREPARED BY - H. DALE WIGHT - CRAWFORD COUNTY ENGINEER - COURTHOUSE DENISON, IOWA 51442 (712)263-2449

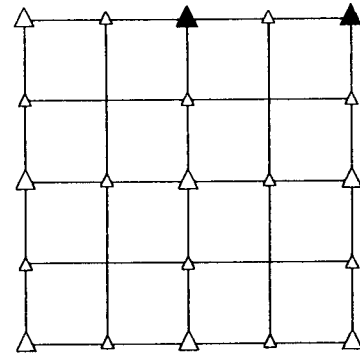
UNITED STATES PUBLIC LAND SURVEY CORNER CERTIFICATE OF

LAND SURVEY MONUMENT SITUATED IN SECTION 2, T 82 N, R 37 W OF
THE 5TH P.M., CRAWFORD COUNTY, IOWA.
PREVIOUSLY RECORDED IN BOOK _____, PAGE _____, OTHER _____

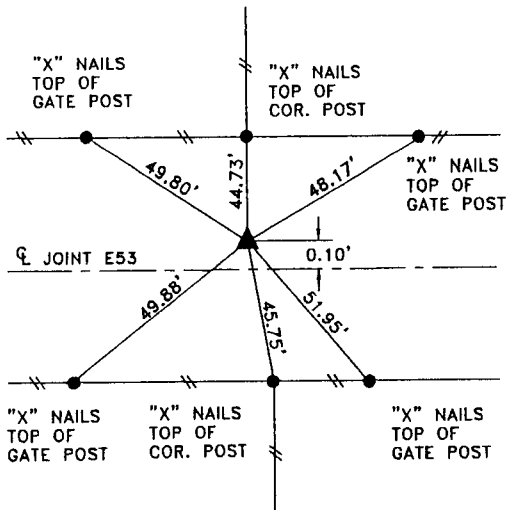
MONUMENT DESCRIPTION AND REMARKS

NE CORNER - SET BOLT FLUSH WITH ASPHALT
FROM CONSTRUCTION TIES

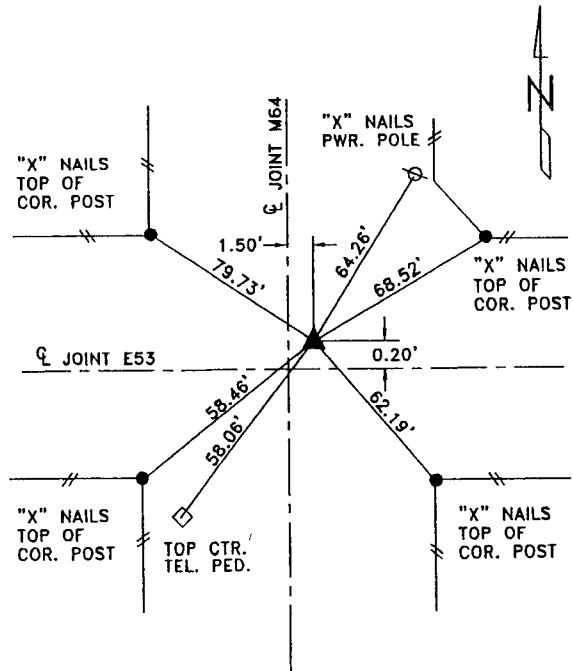
N1/4 CORNER - SET BOLT FLUSH WITH ASPHALT
FROM CONSTRUCTION TIES
CORNER IS IN LINE WITH NORTH FENCE AND
1.50' WEST OF SOUTH FENCE



PLAN VIEW SHOWING RELATIVE LOCATION OF MONUMENT AND REFERENCE POINTS.



DISTANCES PLUMB CHAINED
N1/4 CORNER SECTION 2-82-37



DISTANCES PLUMB CHAINED
NE CORNER SECTION 2-82-37

I hereby certify that this engineering document or
land surveying document was prepared by me or
under my direct personal supervision and that I am
a duly licensed Professional Engineer and a duly
licensed Land Surveyor, under the laws of the
State of Iowa.

SIGNED _____ DATE (Month, Day, Year)

H. Dale Wight 1-24-2000

H. DALE WIGHT, P.E. & L.S. Iowa Reg. No. 5798

My license renewal date is December 31, 2000

