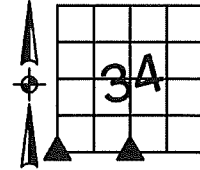


Sara Meseck, RECORDER
 Crawford County, Iowa
 Instr. Number: 2023-1292
 Recorded: 7/26/2023 at 8:58:00.0 AM
 Pages 1
 County Recording Fee: \$7.00
 Iowa E-Filing Fee: \$3.13
 Combined Fee: \$10.13
 Revenue Tax:

PREPARED BY AND RETURN TO: MIKE SCHULTE, SCHULTE SURVEYING, INC., 2003 390TH STREET, WESTSIDE, IA 51467 (712) 790-3489

UNITED STATES PUBLIC LAND SURVEY CORNER CERTIFICATE OF
 LAND SURVEY MONUMENTS SITUATED IN SECTION 34, TOWNSHIP 82 NORTH, RANGE 37 WEST, OF THE FIFTH
 PRINCIPAL MERIDIAN, CRAWFORD COUNTY, IOWA. PREVIOUSLY RECORDED IN SEE BELOW IN COUNTY
(book, page instrument number)
 RECORDER'S OFFICE.



SW CORNER

FND 5/8" REBAR YPC #8893

N=7188444.21 E=16658688.17 Z=1333.73

USED CERTIFICATE RECORDED IN INSTRUMENT #2015-0154 IN THE CRAWFORD COUNTY RECORDER'S OFFICE AND A METAL LOCATOR TO SEARCH AREA, FOUND A 5/8" REBAR YPC #8893. VERIFIED WITH 1 REFERENCE TIE.

THIS CERTIFICATE IS BEING FILED TO UPDATE THE REFERENCE TIES.

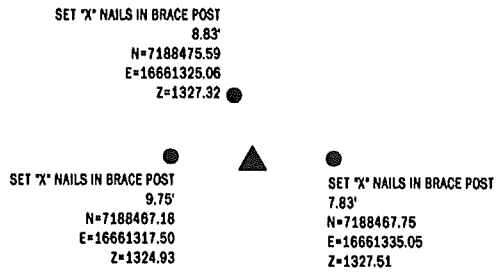
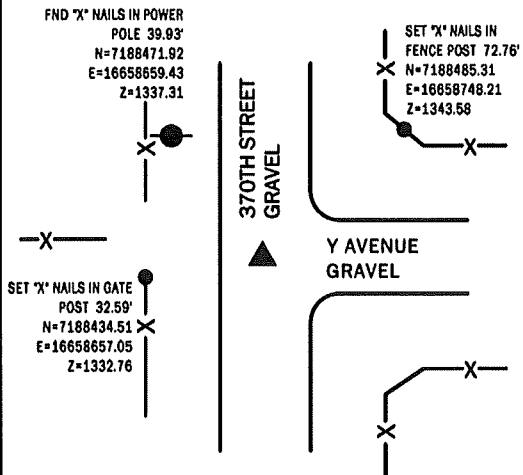
S1/4 CORNER

FND 5/8" REBAR YPC #6806

N=7188467.03 E=16661327.25 Z=1325.77

USED CERTIFICATE RECORDED IN INSTRUMENT #2015-0154 IN THE SHELBY COUNTY RECORDER'S OFFICE AND A METAL LOCATOR TO SEARCH AREA, FOUND A 5/8" REBAR YPC #6806. VERIFIED WITH SURROUNDING FIELD EVIDENCE.

THIS CERTIFICATE IS BEING FILED TO UPDATE THE REFERENCE TIES.



*All distances are measured horizontally unless noted.

I HEREBY CERTIFY THAT THIS LAND SURVEYING DOCUMENT WAS PREPARED BY ME OR UNDER MY DIRECT PERSONAL SUPERVISION AND THAT I AM A DULY LICENSED PROFESSIONAL LAND SURVEYOR UNDER THE LAWS OF THE STATE OF IOWA.

Mike Schulte
 MIKE SCHULTE
 LICENSE NUMBER: 17979
 LICENSE RENEWAL DATE IS DECEMBER 31, 2023
 PAGES COVERED BY THIS SEAL: 1 OF 1



LIST CORNERS TO BE INDEXED

CORNER	SECTION	TWP	RANGE
S1/4 CORNER	34	82	37
SW CORNER	34	82	37
SE CORNER	33	82	37

BASIS OF BEARING

IGRCS ZONE 6 - US SURVEY FEET
 IGRTN DERIVED - NAD83(2011)(EPOCH 2010.00)

SCHULTE SURVEYING, INC.

DRAWN BY: MLS/SLG
 PROJ NUMBER: 23-070