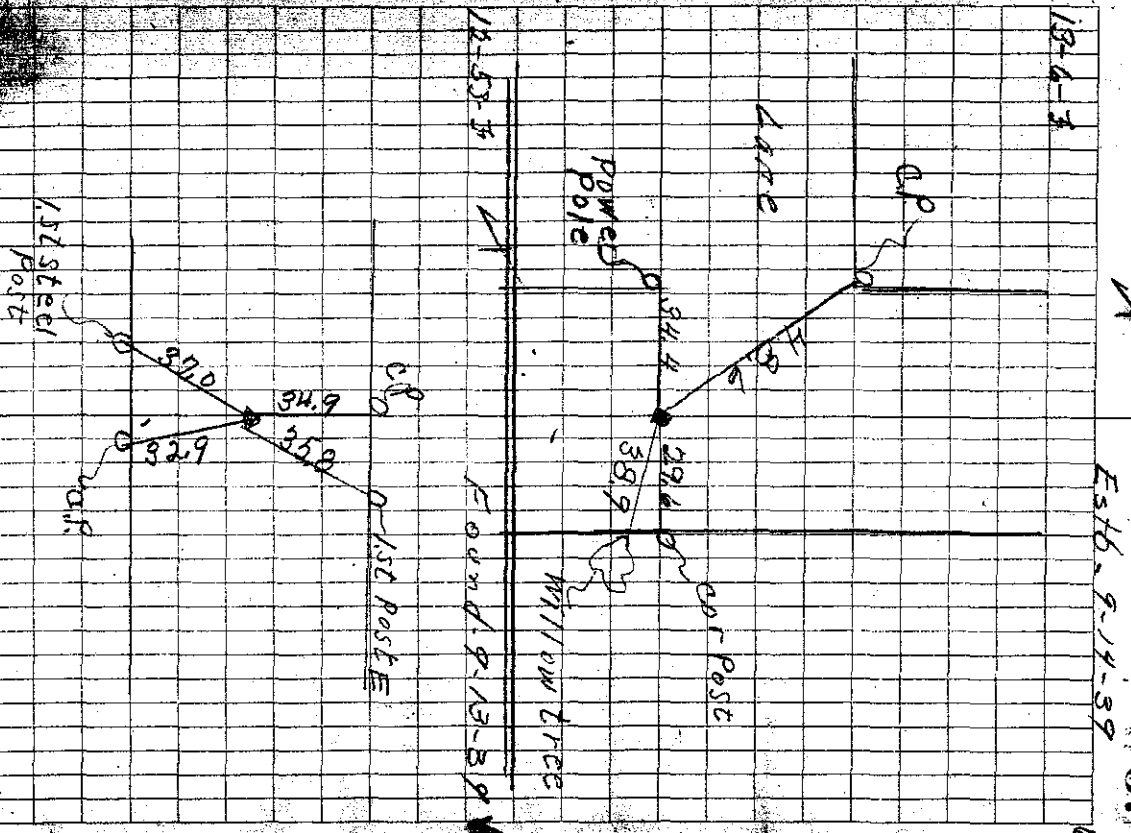


3384 Estb. cor. where Frank Haas and Lorenzo Scott said they had seen
 Lock sticking out of road for years
 Ties Set C.M.
 48.6 SSE from cor post
 34.4 E " " power pole
 29.6 W " " cor post
 38.9 W " " willow tree

28 Found wood stake 18"/079
 33 5' deep lowered and set
 C.M.

Ties
 32.9 N from cor post
 37.0 NE " " 1st steel post W
 34.9 S " " cor post
 35.8 SSW " " 1st post E



Estb. 9-14-39