

RECORDED  
 INDEXED  
 FILED  
 OCT 27 2010  
 CRAWFORD COUNTY IOWA

PREPARED BY - TERENCE E. CRAWFORD - SUNDQUIST ENGINEERING - 120 S. MAIN, DENISON, IOWA 51442 - PHONE (712) 263-8118

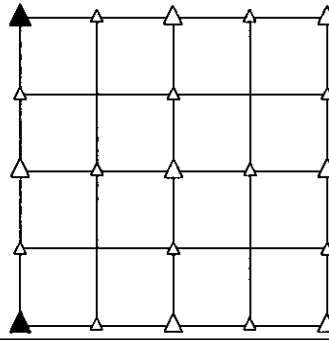
**UNITED STATES PUBLIC LAND SURVEY CORNER CERTIFICATE  
 OF**

LAND SURVEY MONUMENT SITUATED IN SECTION 27, T 82 N, R 37 W OF  
 THE 5TH P.M., CRAWFORD COUNTY, IOWA.  
 PREVIOUSLY RECORDED IN BOOK \_\_\_\_\_, PAGE \_\_\_\_\_, OTHER \_\_\_\_\_

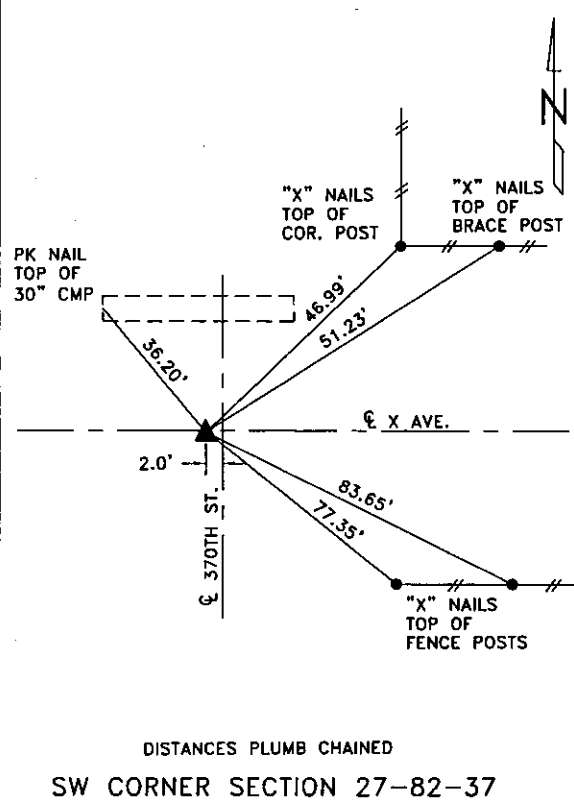
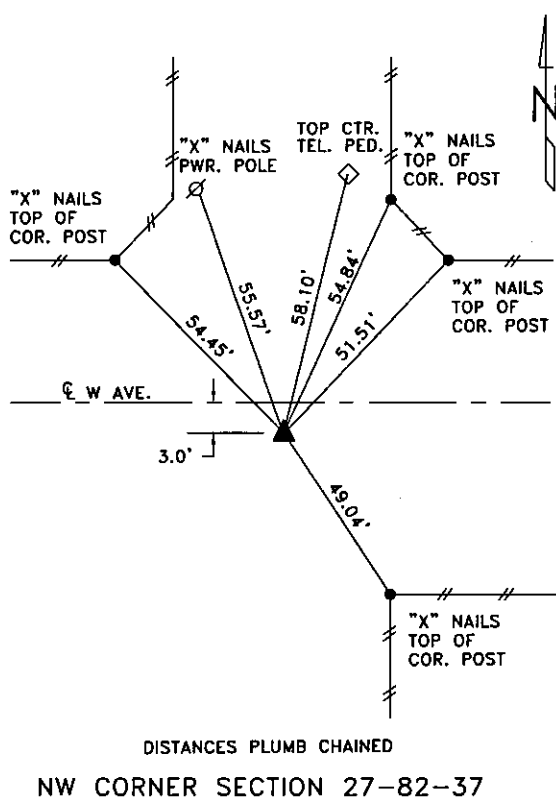
**MONUMENT DESCRIPTION AND REMARKS**

NW CORNER - FOUND 5/8" DIA. IRON PIN 1.0' DEEP.

SW CORNER - FOUND 5/8" DIA. IRON PIN 1.0' DEEP.

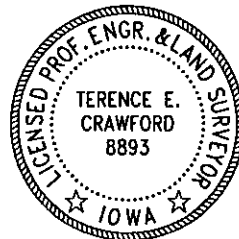


**PLAN VIEW SHOWING RELATIVE LOCATION OF MONUMENT AND REFERENCE POINTS.**



I HEREBY CERTIFY THAT THIS LAND SURVEYING DOCUMENT WAS PREPARED AND THE RELATED SURVEY WORK WAS PERFORMED BY ME OR UNDER MY DIRECT PERSONAL SUPERVISION AND THAT I AM A DULY LICENSED LAND SURVEYOR UNDER THE LAWS OF THE STATE OF IOWA.

*Terence E. Crawford*      OCT 27 2010  
 TERENCE E. CRAWFORD      DATE  
 IA LICENSE NO. 8893      EXP. DATE DECEMBER 31, 2011



SE PROJECT NO. 23310  
 DRAWN BY: LLL