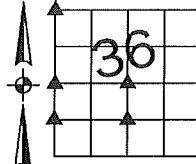
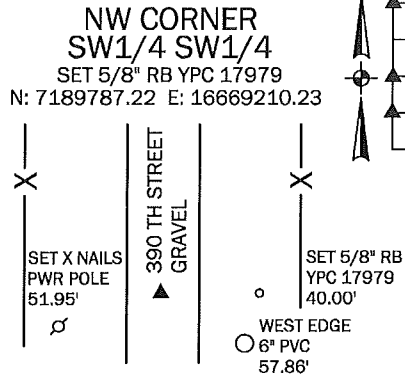
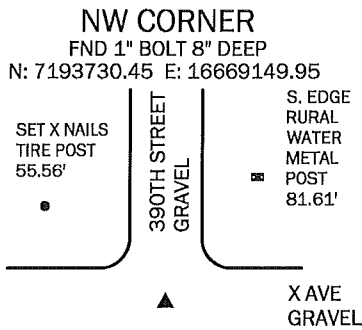


Denise Meeves RECORDER
 Crawford County, Iowa
 Instr. Number: 2018-0882
 Recorded: 4/27/2018 at 8:37:41.0 AM
 Pages 1
 Fee Amount: \$7.00
 Revenue Tax:

PREPARED BY AND RETURN TO: MIKE SCHULTE, SCHULTE SURVEYING, INC., 2003 390TH STREET, WESTSIDE, IA 51467 (712) 790-3489

UNITED STATES PUBLIC LAND SURVEY CORNER CERTIFICATE OF

LAND SURVEY MONUMENTS SITUATED IN SECTION 36, TOWNSHIP 82 NORTH, RANGE 37 WEST, OF THE FIFTH PRINCIPAL MERIDIAN, CRAWFORD COUNTY, IOWA. PREVIOUSLY RECORDED IN N/A IN COUNTY RECORDER'S OFFICE.
(book, page instrument number)

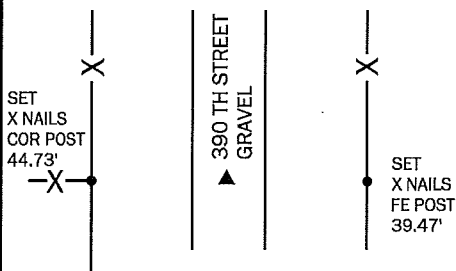


NO CORNER OF RECORD, SET BY SINGLE PROPORTION.

SE CORNER NE1/4 SW1/4

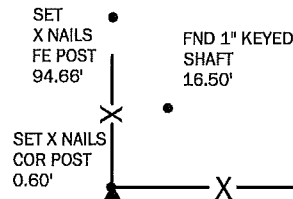
SET 5/8" RB YPC 17979 1' DEEP
 N: 7189815.45 E: 16671832.33
 NO CORNER OF RECORD, SET BY SINGLE PROPORTION. THIS CORNER LANDS N THE MIDDLE OF THE FIELD. SINCE THERE IS NOTHING TO TIE TO NO TIES WERE SET. PLEASE REFER TO ASSOCIATED SURVEY OR CENTER SEC & S1/4 FOR VERIFICATION

W1/4 CORNER
 FND BENT 5/8" REBAR
 N: 7191101.51 E: 16669190.27



CENTER OF SECTION

SET 5/8" RB YPC 17979
 N: 7191133.43 E: 16671812.84



NO MONUMENTS OF RECORD FOUND. USED SURROUNDING SECTION CORNERS AND SURVEY TO THE EAST TO VERIFY THE CORNER POST LOCATION. SEARCHED FOR MONUMENTS BUT NONE WERE FOUND. SET 5/8" REBAR WITH YPC 17979 SOUTH OF CORNER POST.

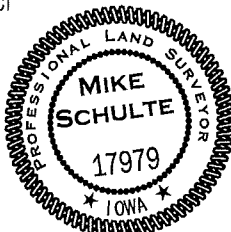
*All distances are measured horizontally unless noted.

LIST CORNERS TO BE INDEXED

CORNER	SECTION	TWP	RANGE
CENTER SECTION	36	82	37
NW COR SWSW	36	82	37
NE COR SESE	35	82	37
NW COR	36	82	37
NE COR	35	82	37
SE COR	26	82	37
SW COR	25	82	37
W1/4 COR	36	82	37
E1/4 COR	35	82	37
SE COR NESW	36	82	37

I HEREBY CERTIFY THAT THIS LAND SURVEYING DOCUMENT WAS PREPARED BY ME OR UNDER MY DIRECT PERSONAL SUPERVISION AND THAT I AM A DULY LICENSED PROFESSIONAL LAND SURVEYOR UNDER THE LAWS OF THE STATE OF IOWA.

Mike Schulte
 MIKE SCHULTE
 DATE 2018/04/20
 LICENSE NUMBER: 17979
 LICENSE RENEWAL DATE IS DECEMBER 31, 2019
 PAGES COVERED BY THIS SEAL: 1 OF 1



BASIS OF BEARING

IA RCS ZONE 6 - US SURVEY FEET
 IARTN DERIVED - NAD83(2011)(EPOCH 2010.00)

SCHULTE SURVEYING, INC.

DRAWN BY: MLS
 PROJ NUMBER: 18-005