

INDEXED  
 FOLLOW UP  
 PROOFED  
 SCANNED

Crawford County Recorder  
 Denise Meeves  
**Fee Book 2010-0581**  
 03/29/2010 @11:03AM  
 PLC PLAT CORNER CER  
 Book: Page: # Pages: 1  
 Total Fees: \$9.00

PREPARED BY & RETURN TO MIKE SCHULTE, SNYDER & ASSOCIATES, INC. 2727 SW SNYDER ROAD, ANKENY, IOWA 50023 (515) 964-2020

**UNITED STATES PUBLIC LAND SURVEY CORNER CERTIFICATE OF**

Land Survey Monuments situated in Section 36, Township 82 N, Range 37 W, of the Fifth Principal Meridian, CRAWFORD County, Iowa. Previously recorded in INST. # 2000-0589 in County Recorder's Office.  
 (book, page, document number, ect.)

(Show reason for preparing this certificate, the evidence and detailed procedures used in establishing the corner positions and monumentation found or placed.)

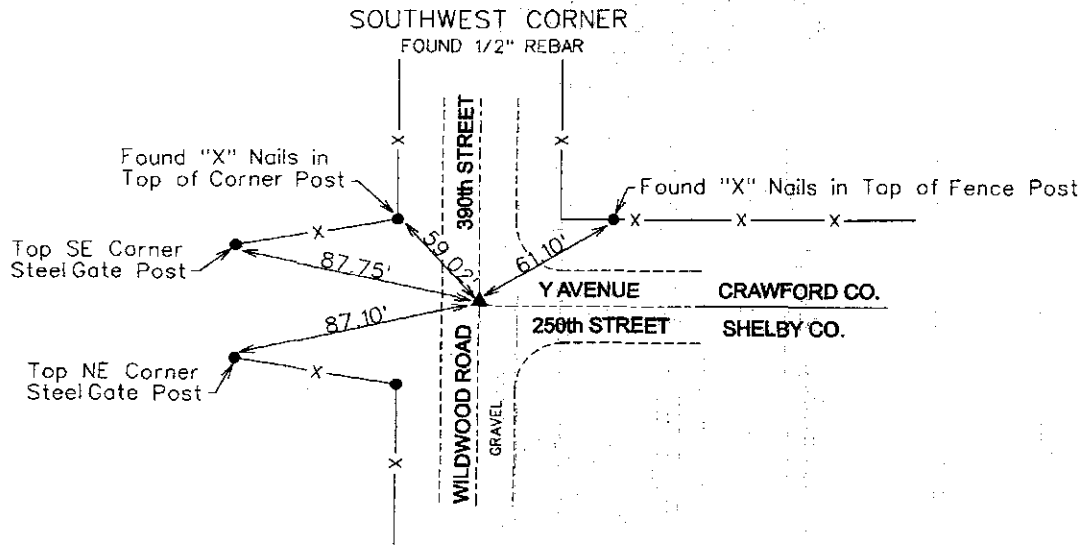
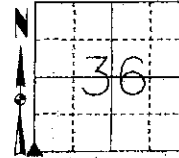
**Monument Description and Remarks:**

SOUTHWEST CORNER SECTION 36-82-37  
USED RECORDED SECTION CORNER TIES. METAL LOCATOR AND VISUAL SEARCH AT THE INTERSECTION OF 390TH STREET CENTERLINE AND Y AVENUE CENTERLINE.  
FOUND 1/2" REBAR 7" BELOW THE SURFACE. VERIFIED POSITION OF SECTION CORNER WITH SURROUNDING 1/4 CORNERS. THIS CERTIFICATE IS BEING FILED DUE TO MISSING REFERENCE TIES.

**Plan-View**

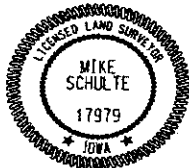
(Show a minimum of three reference ties to durable physical objects, relevant monuments and physical conditions that will enable recovery of the corner.)

NAD83 (1996)  
 Lat: 41°51'48.14723"N  
 Long: 95°06'43.57154"W  
 Elevation: 1324.97



NOTE: ALL DISTANCES MEASURED HORIZONTAL UNLESS OTHERWISE NOTED.

S&A F.3



I hereby certify that this land surveying document was prepared and the related survey work was performed by me or under my direct personal supervision and that I am a duly Licensed Land Surveyor under the laws of the State of Iowa.  
 Mike Schulte, PLS Date: 3/26/10  
 License Number: 17979  
 My License Renewal Date is December 31, 2011  
 Pages or sheets covered by this seal:  
 SHEET 1 OF 1

**List Corners to be Indexed**

Corners	Section	Twp	Range
SW CORNER	36	82	37
SE CORNER (CRAWFORD CO.)	35	82	37
NW CORNER	1	81	37
NE CORNER (SHELBY CO.)	2	81	37

TECH: MLS/SLG PN: 82-37-36 SW 109.1102 DATE: 3/15/10