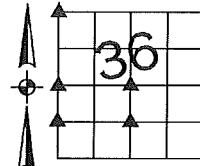
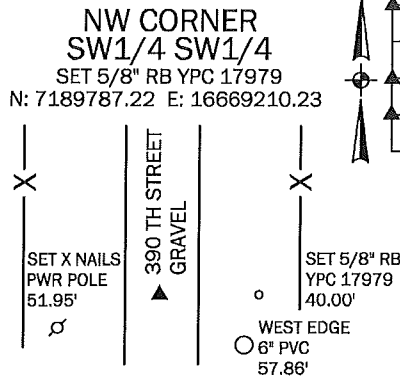
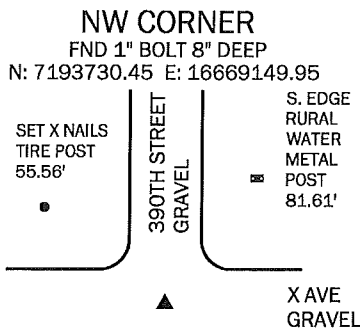


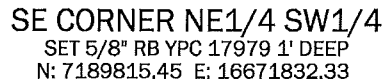
Denise Meeves RECORDER
 Crawford County, Iowa
 Instr. Number: 2018-0882
 Recorded: 4/27/2018 at 8:37:41.0 AM
 Pages 1
 Fee Amount: \$7.00
 Revenue Tax:

PREPARED BY AND RETURN TO: MIKE SCHULTE, SCHULTE SURVEYING, INC., 2003 390TH STREET, WESTSIDE, IA 51467 (712) 790-3489

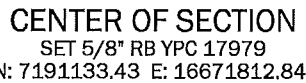
UNITED STATES PUBLIC LAND SURVEY CORNER CERTIFICATE OF
 LAND SURVEY MONUMENTS SITUATED IN SECTION 36, TOWNSHIP 82 NORTH, RANGE 37 WEST, OF THE FIFTH
 PRINCIPAL MERIDIAN, CRAWFORD COUNTY, IOWA. PREVIOUSLY RECORDED IN N/A IN COUNTY
(book, page instrument number)
 RECORDER'S OFFICE.



NO CORNER OF RECORD, SET BY SINGLE PROPORTION.



NO CORNER OF RECORD, SET BY SINGLE PROPORTION. THIS
 CORNER LANDS N THE MIDDLE OF THE FIELD. SINCE THERE IS
 NOTHING TO TIE TO NO TIES WERE SET. PLEASE REFER TO
 ASSOCIATED SURVEY OR CENTER SEC & S1/4 FOR VERIFICATION



NO MONUMENTS OF RECORD FOUND. USED
 SURROUNDING SECTION CORNERS AND SURVEY TO
 THE EAST TO VERIFY THE CORNER POST LOCATION.
 SEARCHED FOR MONUMENTS BUT NONE WERE
 FOUND. SET 5/8" REBAR WITH YPC 17979 SOUTH
 OF CORNER POST.

*All distances are measured horizontally unless noted.

LIST CORNERS TO BE INDEXED

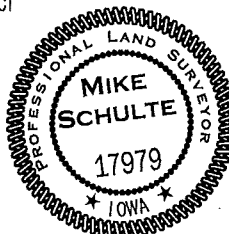
CORNER	SECTION	TWP	RANGE
CENTER SECTION	36	82	37
NW COR SWSW	36	82	37
NE COR SESE	35	82	37
NW COR	36	82	37
NE COR	35	82	37
SE COR	26	82	37
SW COR	25	82	37
W1/4 COR	36	82	37
E1/4 COR	35	82	37
SE COR NESW	36	82	37

BASIS OF BEARING

laRCS ZONE 6 - US SURVEY FEET
 laRTN DERIVED - NAD83(2011)(EPOCH 2010.00)

I HEREBY CERTIFY THAT THIS LAND SURVEYING
 DOCUMENT WAS PREPARED BY ME OR UNDER MY DIRECT
 PERSONAL SUPERVISION AND THAT I AM A DULY
 LICENSED PROFESSIONAL LAND SURVEYOR UNDER THE
 LAWS OF THE STATE OF IOWA.

Mike Schulte
 MIKE SCHULTE 2018/04/20
 DATE
 LICENSE NUMBER: 17979
 LICENSE RENEWAL DATE IS DECEMBER 31, 2019
 PAGES COVERED BY THIS SEAL: 1 OF 1



SCHULTE SURVEYING, INC.

DRAWN BY: MLS
 PROJ NUMBER: 18-005