

INDEXED         
 FOLLOW UP         
 PROOFED         
 SCHEDULED       

Crawford County Recorder  
 Denise Meeves  
**Fee Book 2010-0582**  
 03/29/2010 @11:06AM  
 PLC PLAT CORNER CER  
 Book: \_\_\_\_\_ Page: # Pages: 1  
 Total Fees: \$9.00

PREPARED BY & RETURN TO MIKE SCHULTE, SNYDER & ASSOCIATES, INC. 2727 SW SNYDER ROAD, ANKENY, IOWA 50023 (515) 964-2020

**UNITED STATES PUBLIC LAND SURVEY CORNER CERTIFICATE OF**

Land Survey Monuments situated in Section 36, Township 82 N, Range 37 W, of the Fifth Principal Meridian, CRAWFORD, County, Iowa.  
 Previously recorded in N/A in County Recorder's Office.  
 (book, page, document number, ect.)

(Show reason for preparing this certificate, the evidence and detailed procedures used in establishing the corner positions and monumentation found or placed.)

**Monument Description and Remarks:**

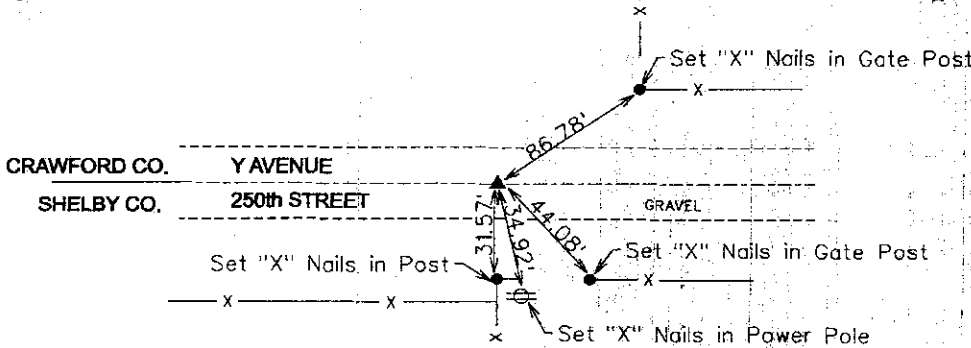
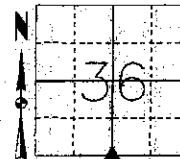
SOUTH 1/4 CORNER SECTION 36-82-37  
 CRAWFORD COUNTY HAS NO RECORD OF CORNER RECORDED OR AT ENGINEER'S OFFICE. ROAD IS MAINTAINED BY SHELBY COUNTY. NO RECORDED CERTIFICATE AT SHELBY COUNTY BUT SOME TIES WERE FOUND IN ENGINEER'S OFFICE. FENCE/TIES ON THE NORTH SIDE OF 250th ARE GONE. A DILIGENT SEARCH FOR CROSS NAILS WAS MADE ON THE POSTS AND POWER POLE ON THE SOUTH SIDE WAS MADE BUT NONE WERE FOUND. TRIED MANY DIFFERENT MEASUREMENTS TO THE EXISTING POSTS TO FIND AN AGREEMENT IN THE TIES BUT NOTHING WOULD AGREE. NEXT MEASUREMENTS WERE MADE TO PROJECTED RIGHT OF WAY FENCES ON THE NORTH AND RIGHT OF WAY FENCES TO THE SOUTH, AS WELL AS THE LINE FENCE TO THE SOUTH TO DETERMINE A POSITION BY BEST EVIDENCE. NEXT A POSITION WAS CALCULATED BY SINGLE PROPORTION. THE TWO POSITIONS WERE WITHIN 1.5' OF EACH OTHER. A 3' LONG 2" WIDE 2" DEEP HOLE WAS DUG COVERING BOTH OF THESE POINTS AND NOTHING WAS FOUND. DURING THE EXCAVATION, I FOUND NO EVIDENCE OF FILL, NO ROAD-BEDS OR ORGANIC MATERIAL. THE AREA LOOKED AS IF IT COULD HAVE BEEN LOWERED. CONVERSATIONS WITH NEIGHBORING LAND OWNERS INDICATED THERE WAS A GRADING PROJECT IN THE 70'S. THE ENGINEER'S TIES ARE DATED 1961. ANOTHER SEARCH AT THE ENGINEER'S OFFICE WAS MADE FOR GRADING PLANS BUT NONE WERE FOUND. THE CONDITION AND OFFSETS IN THE EXISTING FENCES MADE IT DIFFICULT TO RETRACE THE ORIGINAL POSITION. THE OBLITERATED CORNER WAS SET ON-LINE BY SINGLE PROPORTION DISTANCE DUE TO HOW WELL IT FITS THE SURROUNDING EVIDENCE.

**Plan-View**

(Show a minimum of three reference ties to durable physical objects, relevant monuments and physical conditions that will enable recovery of the corner.)

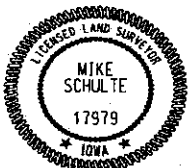
**SOUTH 1/4 CORNER**

NAD83 (1996) SET 1/2" REBAR WITH YELLOW CAP #17979  
 Lat: 41°51'48.20075"N  
 Long: 95°06'08.92546"W



NOTE: ALL DISTANCES MEASURED HORIZONTAL UNLESS OTHERWISE NOTED.

S&A: FB



I hereby certify that this land surveying document was prepared and the related survey work was performed by me or under my direct personal supervision and that I am a duly licensed Land Surveyor under the laws of the State of Iowa.  
 Mike Schulte, PLS Date: 3/26/10  
 License Number: 17979  
 My License Renewal Date is December 31, 2011  
 Pages or sheets covered by this seal:  
 SHEET 1 OF 1

**List Corners to be Indexed**

Corners	Section	Twp	Range
S CORNER (CRAWFORD CO.)	36	82	37
N CORNER (SHELBY CO.)	1	81	37

TECH: MLS/SLG PN: 82-37-36 S 109.1102 DATE: 3/15/10