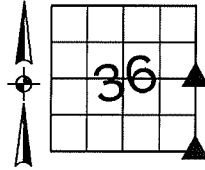


Denise Meeves RECORDER
 Crawford County, Iowa
 Instr. Number: 2021-2159
 Recorded: 9/22/2021 at 8:48:23.0 AM
 Pages 1
 County Recording Fee: \$7.00
 Iowa E-Filing Fee: \$3.13
 Combined Fee: \$10.13
 Revenue Tax:

PREPARED BY AND RETURN TO: MIKE SCHULTE, SCHULTE SURVEYING, INC., 2003 390TH STREET, WESTSIDE, IA 51467 (712) 790-3489

UNITED STATES PUBLIC LAND SURVEY CORNER CERTIFICATE OF

LAND SURVEY MONUMENTS SITUATED IN SECTION 36, TOWNSHIP 82 NORTH, RANGE 37 WEST, OF THE FIFTH PRINCIPAL MERIDIAN, CRAWFORD COUNTY, IOWA. PREVIOUSLY RECORDED IN SEE BELOW IN COUNTY RECORDER'S OFFICE.
(book, page instrument number)



E1/4 CORNER

FND 80D SPIKE 4" DEEP

N=7191150.63 E=16674440.35

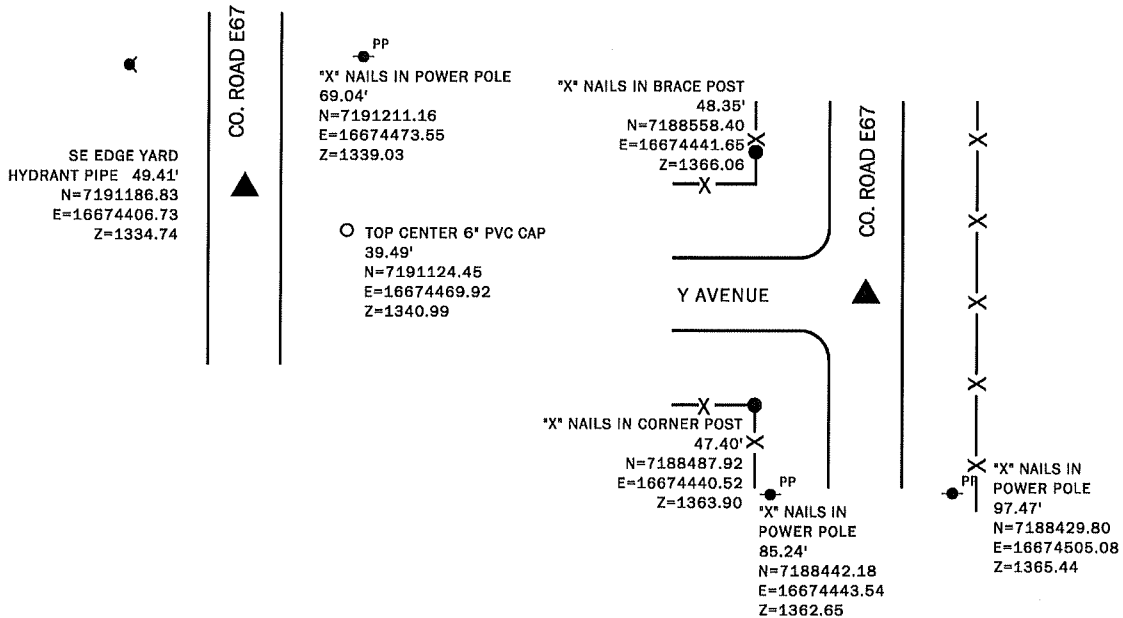
USED CERTIFICATE RECORDED IN INSTRUMENT NO. 2002-0449 AND A METAL DETECTOR TO FIND AN 80D SPIKE 4" DEEP. VERIFIED FOUND MONUMENT WITH SURROUNDING FIELD EVIDENCE AND ACCEPTED.
 THIS CERTIFICATE IS BEING FILED TO UPDATE REFERENCE TIES.

SE CORNER

SET 5/8" REBAR YPC #17979 OVER

N=7188522.00 E=16674473.46

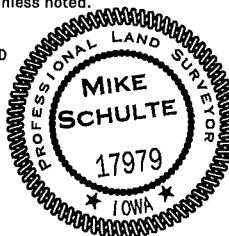
USED CERTIFICATE RECORDED IN CRAWFORD COUNTY INSTRUMENT NO. 2002-0448 AND A METAL DETECTOR TO FIND A BENT SPIKE 1" DEEP. VERIFIED FOUND MONUMENT WITH 1 REMAINING TIE AND ACCEPTED. SET 5/8" REBAR YPC #17979 3" DEEP.
 THIS CERTIFICATE IS BEING FILED TO UPDATE THE MONUMENT AND REFERENCE TIES.



*All distances are measured horizontally unless noted.

I HEREBY CERTIFY THAT THIS LAND SURVEYING DOCUMENT WAS PREPARED BY ME OR UNDER MY DIRECT PERSONAL SUPERVISION AND THAT I AM A DULY LICENSED PROFESSIONAL LAND SURVEYOR UNDER THE LAWS OF THE STATE OF IOWA.

Mike Schulte
 MIKE SCHULTE
 2021/09/08
 DATE
 LICENSE NUMBER: 17979
 LICENSE RENEWAL DATE IS DECEMBER 31, 2021
 PAGES COVERED BY THIS SEAL: 1 OF 1



LIST CORNERS TO BE INDEXED

CORNER	SECTION	TWP	RANGE
E1/4 CORNER	36	82	37
W1/4 CORNER	31	82	36
SE CORNER (CRAWFORD CO)	36	82	37
SW CORNER (CARROLL CO)	31	82	36
NW CORNER (AUDUBON CO)	6	81	36
NE CORNER (SHELBY CO)	1	81	37

BASIS OF BEARING

1aRCS ZONE 6 - US SURVEY FEET
 1aRTN DERIVED - NAD83(2011)[EPOCH 2010.00]

SCHULTE SURVEYING, INC.

DRAWN BY: MLS
 PROJ NUMBER: 21-067