

36 31 Found 1 rock 6" x 10" x 14", 1 rock  
6" x 6" round, 3 pieces of crockery  
3 pieces of barrel hoops, 18" deep  
Lowered and set C.M.

Ties:

36.2 SW from N gate post.  
47.3 W " " REA pole  
35.2 NW " " 12" Elm tree  
29.8 E " " tel. pole  
31.2 E " " cor post

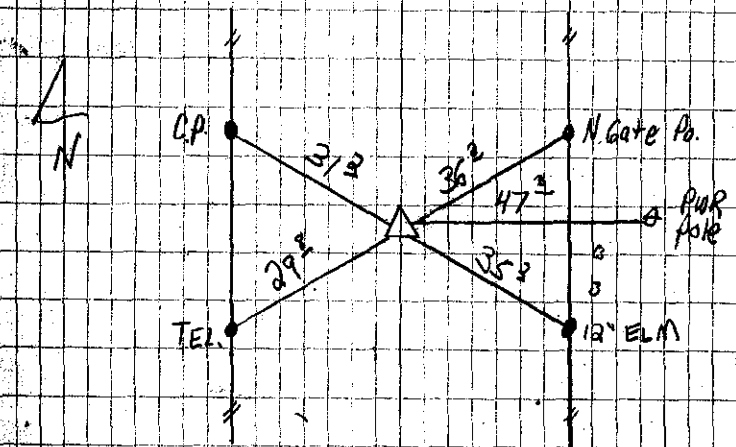
25 Found 6" x 9" x 12" rock, 2 pieces  
36 of brick 12" deep. Lowered and  
set C.M.

Ties:

38.5 SW from 16" Ash tree  
32.9 SSW " " tel. pole  
33.4 SSE " " cor post  
33.0 N. " " " "  
Cor is 7.0 E of range of fence from North

17-39-3

Found - 10-25-39



17-41-3

Found - 10-25-39

