

2000 JA 24 PM 3:02

INST. NO. 200-0181
DENISE MEEVES, RECORDER
Denise Meeves
FEE None

INDEXED
FOLLOW UP
RECORDED

PREPARED BY - H. DALE WIGHT - CRAWFORD COUNTY ENGINEER - COURTHOUSE DENISON, IOWA 51442 (712)263-2449

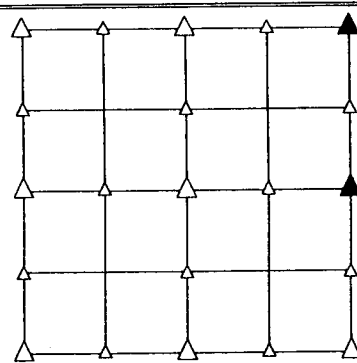
UNITED STATES PUBLIC LAND SURVEY CORNER CERTIFICATE OF

LAND SURVEY MONUMENT SITUATED IN SECTION 3, T 82 N, R 37 W OF
THE 5TH P.M., CRAWFORD COUNTY, IOWA.
PREVIOUSLY RECORDED IN BOOK _____, PAGE _____, OTHER _____

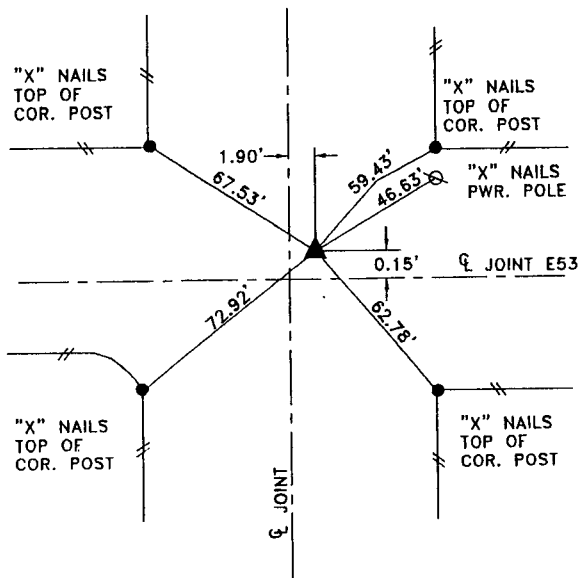
MONUMENT DESCRIPTION AND REMARKS

NE CORNER - SET BOLT FLUSH WITH ASPHALT
FROM CONSTRUCTION TIES

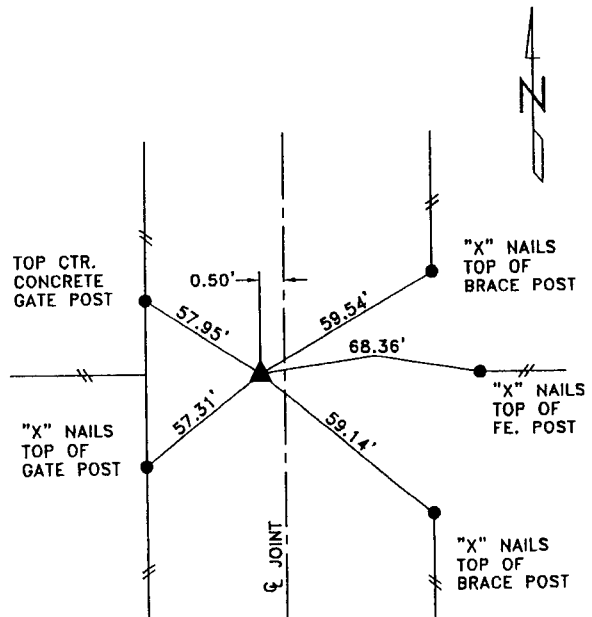
E1/4 CORNER - SET BOLT FLUSH WITH ASPHALT
FROM CONSTRUCTION TIES
CORNER IS IN LINE WITH FENCES
EAST AND WEST



PLAN VIEW SHOWING RELATIVE LOCATION OF MONUMENT AND REFERENCE POINTS.



DISTANCES PLUMB CHAINED
NE CORNER SECTION 3-82-37



DISTANCES PLUMB CHAINED
E1/4 CORNER SECTION 3-82-37

I hereby certify that this engineering document or
land surveying document was prepared by me or
under my direct personal supervision and that I am
a duly licensed Professional Engineer and a duly
licensed Land Surveyor, under the laws of the
State of Iowa.

SIGNED H. Dale Wight DATE (Month, Day, Year) 1-24-2000
H. DALE WIGHT, P.E. & L.S. Iowa Reg. No. 5798
My license renewal date is December 31, 2000

