

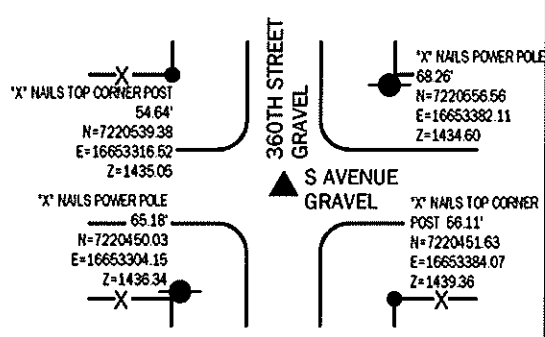
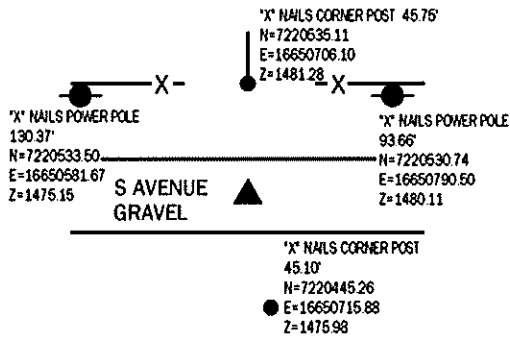
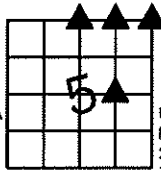
Sara Meseck, RECORDER
 Crawford County, Iowa
 Instr. Number: 2024-2503
 Recorded: 12/16/2024 at 1:23:51.0 PM
 Pages 1
 County Recording Fee: \$7.00
 Iowa E-Filing Fee: \$3.13
 Combined Fee: \$10.13
 Revenue Tax:

PREPARED BY AND RETURN TO: MIKE SCHULTE, SCHULTE SURVEYING, INC., 2003 390TH STREET, WESTSIDE, IA 51467 (712) 790-3489

UNITED STATES PUBLIC LAND SURVEY CORNER CERTIFICATE OF LAND SURVEY MONUMENTS SITUATED IN SECTION 05, TOWNSHIP 82 NORTH, RANGE 37 WEST, OF THE FIFTH PRINCIPAL MERIDIAN, CRAWFORD COUNTY, IOWA. PREVIOUSLY RECORDED IN SEE BELOW IN COUNTY RECORDER'S OFFICE.
(book, page instrument number)

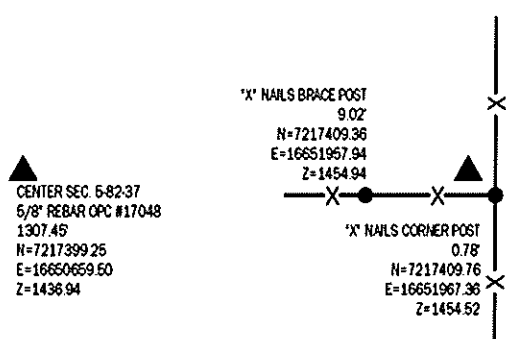
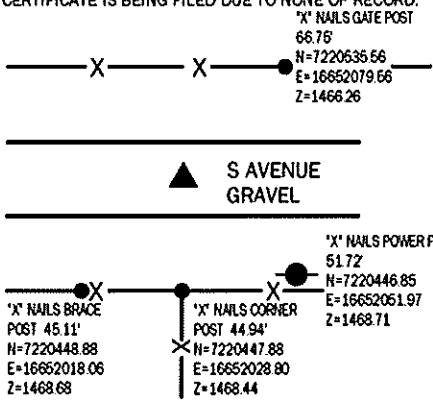
N1/4 CORNER
 FND 1" IRON PIN 6" DEEP
 N=7220489.37 E=16650706.47 Z=1478.14
 USED CERTIFICATE RECORDED IN INSTRUMENT #95-0692 AND A METAL LOCATOR TO FIND A 1" IRON PIN 6" DEEP. VERIFIED WITH 2 REMAINING TIES.
 THIS CERTIFICATE IS BEING FILED TO UPDATE REFERENCE TIES.

NE CORNER
 FND 1" IRON PIN 4" DEEP
 N=7220496.27 E=16653350.09 Z=1435.88
 USED CERTIFICATE RECORDED IN INSTRUMENT #95-0692 AND A METAL LOCATOR TO FIND A 1" IRON PIN 4" DEEP. VERIFIED WITH 2 REMAINING TIES.
 THIS CERTIFICATE IS BEING FILED TO UPDATE REFERENCE TIES.



NE CORNER NW1/4 FRL. NE1/4
 SET 5/8" REBAR YPC #17979
 N=7220492.82 E=16652028.28
 NO RECORD OF CORNER FOUND. SEARCHED AREA FOUND NOTHING. SINGLE PROPORTION FITS FENCE LINE SOUTH WELL. SET 5/8" REBAR YPC #17979 3' DEEP BY SINGLE PROPORTION.
 THIS CERTIFICATE IS BEING FILED DUE TO NONE OF RECORD.

SE CORNER SW1/4 FRL. NE1/4
 SET 5/8" REBAR YPC #17979
 N=7217410.40 E=16651966.90 Z=1453.35
 NO RECORDED CERTIFICATE FOUND. OLD RECORDS SHOW THIS AS AN OLD PROPERTY LINE. SET 5/8" REBAR YPC #17979 AT CORNER POST AND SPLIT OF DISTANCES EAST-WEST.
 THIS CERTIFICATE IS BEING FILED DUE TO NONE OF RECORD.



*All distances are measured horizontally unless noted.

I HEREBY CERTIFY THAT THIS LAND SURVEYING DOCUMENT WAS PREPARED BY ME OR UNDER MY DIRECT PERSONAL SUPERVISION AND THAT I AM A DULY LICENSED PROFESSIONAL LAND SURVEYOR UNDER THE LAWS OF THE STATE OF IOWA.

Mike Schulte
 MIKE SCHULTE
 LICENSE NUMBER 17979
 LICENSE RENEWAL DATE IS DECEMBER 31, 2025
 PAGES COVERED BY THIS SEAL: 1 OF 1



LIST CORNERS TO BE INDEXED

CORNER	SECTION	TWP	RANGE
SE CORNER SW1/4 FRL. NE1/4	5	82	37
N1/4 CORNER	5	82	37
S1/4 CORNER	32	83	37
NE CORNER	5	82	37
SE CORNER	32	83	37
SW CORNER	33	83	37
NW CORNER	4	82	37
NE CORNER NW1/4 FRL. NE1/4	5	82	37
SE CORNER SW1/4 SE1/4	32	83	37

BASIS OF BEARING
 IARCS ZONE 6 - US SURVEY FEET
 IARTH DERIVED - NAD83(2011), EPOCH 2010.00