

INDEXED \_\_\_\_\_  
 FOLLOW UP \_\_\_\_\_  
 PROOFED \_\_\_\_\_  
 SCANNED \_\_\_\_\_

Instrument #: 2014-1878  
 09/15/2014 11:47:20 AM Total Pages: 1  
 PLC PLAT CORNER CER  
 Recording Fee: \$7.00 Transfer Tax: \$0  
 Denise Reeves, Recorder, Crawford County Iowa



WILKE LAND SURVEYING INC. 401 1800th Street Panama, Iowa 51562 (712)489-2898

**UNITED STATES PUBLIC LAND SURVEY CORNER CERTIFICATE**

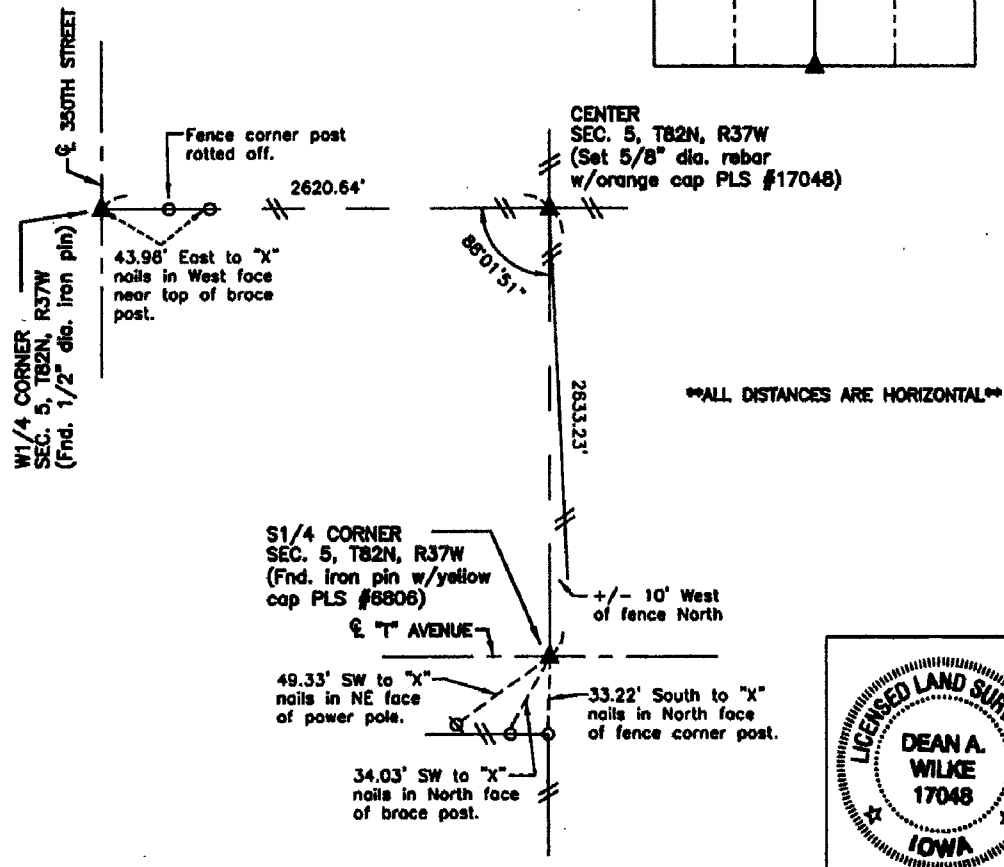
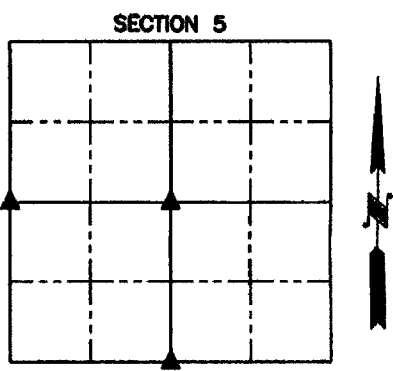
SECTION 5 TOWNSHIP 82N RANGE 37W COUNTY CRAWFORD  
 Reason for Certificate: (No record Certificate)

Monument Description and Remarks:

W1/4 CORNER - Found 1/2" diameter iron pin (1.0' deep).  
 Corner is in line with fence to the East.

S1/4 CORNER - Found iron pin with yellow cap PLS #6806 (0.2' deep).  
 Corner is in line with fence to the South, and approximately 10' West of fence to the North.

CENTER - Set 5/8" diameter by 24" long rebar with orange cap PLS #17048 (flush) between double fence corner posts with fences North, East, South, and West. Corner is 0.58' Southeast of "X" nails in Southeast face of fence corner post, and 0.64' Northwest of "X" nails in Northwest face of fence corner post.



List Corners to be Indexed			
Corner	Section	Twp.	Range
W1/4 CORNER	5	82N	37W
S1/4 CORNER	5	82N	37W
CENTER	5	82N	37W

I hereby certify that this land surveying document was prepared and the related survey work was performed by me or under my direct personal supervision and that I am a duly Licensed Land Surveyor under the laws of the State of Iowa.

*Dean A. Wilke* 9/09/14  
 Dean A. Wilke Date

License number 17048  
 My license renewal date is December 31, 2015  
 Pages or sheets covered by this seal: This page only