

WARDER C. HILLHOUSE, JR. MHF ENGINEERING P.C. 300 W. MCKINLEY JEFFERSON, IA. (515)386-4101

# UNITED STATES PUBLIC LAND SURVEY CORNER CERTIFICATE OF

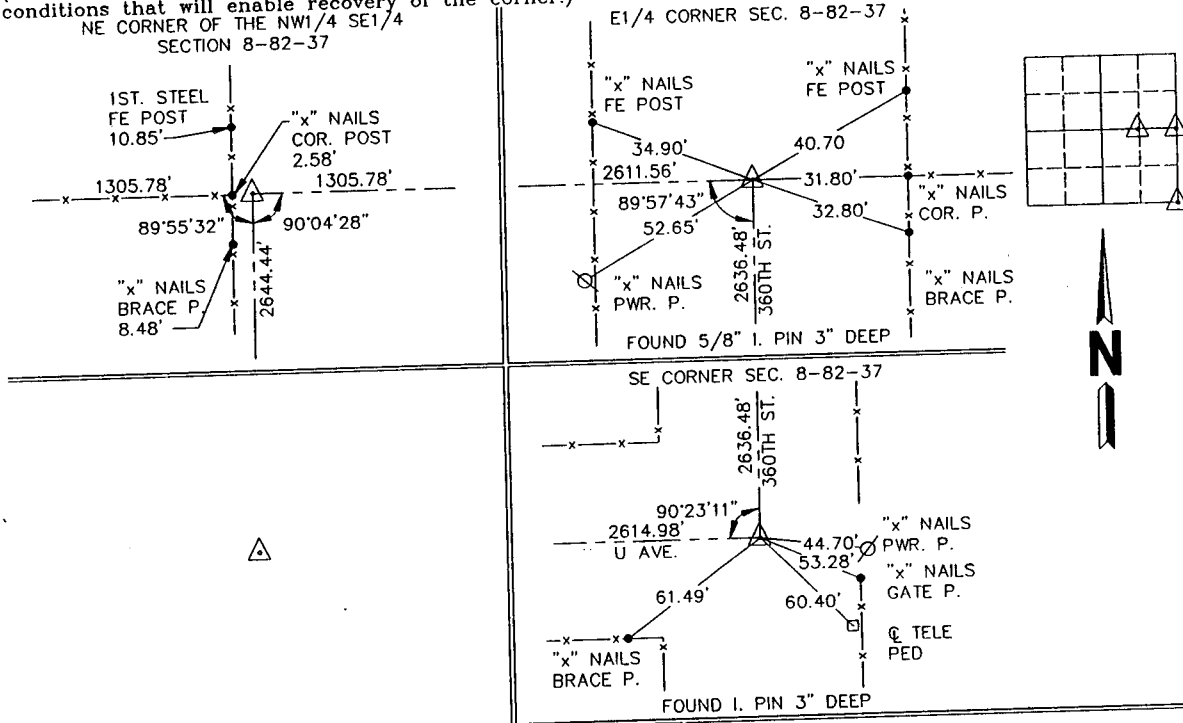
Land Survey Monuments in Section 8, Township 82, Range 37, of the Fifth Principal Meridian, CRAWFORD County, Iowa.  
 Previously recorded in \_\_\_\_\_ in County Recorder's Office.  
(book, page, document number, etc.)

(Show reason for preparing this certificate, the evidence and detailed procedures used in establishing the corner positions and monumentation found or placed.)

Monument Description and Remarks: \_\_\_\_\_  
 \_\_\_\_\_  
 \_\_\_\_\_

## PLAN - VIEW

(Show a minimum of three reference ties to durable physical objects, relevant monuments and physical conditions that will enable recovery of the corner.)



I hereby certify that this survey work was completed and this certificate was prepared by me or under my direct personal supervision and that I am a duly licensed land surveyor under the laws of the state of Iowa.

Signature: \_\_\_\_\_  
 Name typed or printed: Warder C. Hillhouse, Jr.  
 Date: \_\_\_\_\_ Lic. No. 6806  
 License Renewal Dec. 31, 1997  
 Date Surveyed: 03/03/97

Seal

List Corners to be Indexed			
Corners	Section	Twp	Range
E1/4 COR	8	82	37
SE COR	8	82	37
NE COR	8	82	37
NW1/4 SE1/4			

File No. 97019-1

**M.H.F. ENGINEERING, P.C.**  
 ENGINEERS - LAND SURVEYORS  
 Jefferson, Iowa 50129 Ph. (515)386-4101