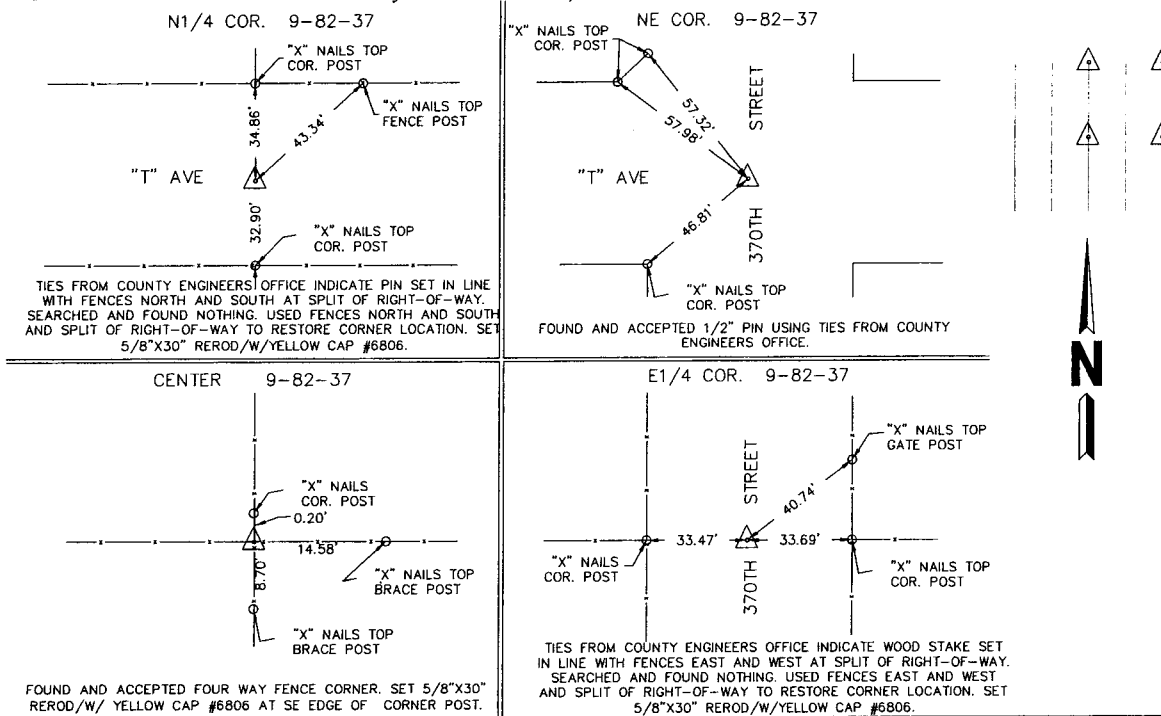


WARDER C. HILLHOUSE, JR. MHF ENGINEERING P.C. 300 W. MCKINLEY JEFFERSON, IA. (515)386-4101  
**UNITED STATES PUBLIC LAND SURVEY CORNER CERTIFICATE OF**  
Land Survey Monuments in Section 09, Township 82, Range 37, of the Fifth Principal Meridian, CRAWFORD County, Iowa.  
Previously recorded in \_\_\_\_\_ in County Recorder's Office.  
(book, page, document number, etc.)  
(Show reason for preparing this certificate, the evidence and detailed procedures used in establishing the corner positions and monumentation found or placed.)  
Monument Description and Remarks: CORNERS LOCATED FOR SURVEY WORK IN SECTION.

### PLAN - VIEW

(Show a minimum of three reference ties to durable physical objects, relevant monuments and physical conditions that will enable recovery of the corner.)



I hereby certify that this land surveying document and the related survey work was performed by me or under my direct personal supervision and that I am a duly licensed land surveyor under the laws of the state of Iowa.

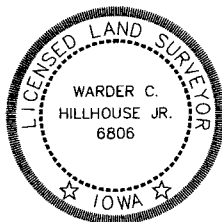
Signature: Warder C. Hillhouse, Jr.  
Warder C. Hillhouse, Jr.

Date: 8/17/04 Lic. No. 6806

License Renewal Dec. 31, 2005

Date Surveyed: 08/12/04

Seal



#### List Corners to be Indexed

Corners	Section	Twp	Range
N1/4 COR.	9	82	37
NE COR.	9	82	37
CENTER	9	82	37
E1/4 COR.	9	82	37

File No. 04153-1



M.H.F. ENGINEERING, P.C.  
ENGINEERS - LAND SURVEYORS  
Jefferson, Iowa 50129 Ph. (515)386-4101