

Sara Meseck, RECORDER
 Crawford County, Iowa
 Instr. Number: 2023-1551
 Recorded: 9/6/2023 at 11:24:15.0 AM
 Pages 1
 County Recording Fee: \$7.00
 Iowa E-Filing Fee: \$3.13
 Combined Fee: \$10.13
 Revenue Tax:

PREPARED BY AND RETURN TO: MIKE SCHULTE, SCHULTE SURVEYING, INC., 2003 390TH STREET, WESTSIDE, IA 51467 (712) 790-3489

UNITED STATES PUBLIC LAND SURVEY CORNER CERTIFICATE OF
 LAND SURVEY MONUMENTS SITUATED IN SECTION 10, TOWNSHIP 82 NORTH, RANGE 37 WEST, OF THE FIFTH
 PRINCIPAL MERIDIAN, CRAWFORD COUNTY, IOWA. PREVIOUSLY RECORDED IN SEE BELOW IN COUNTY
 RECORDER'S OFFICE. (book, page instrument number)

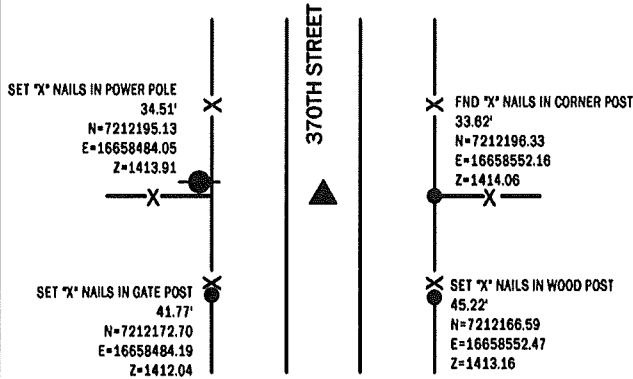
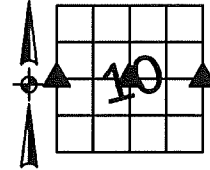
W1/4 CORNER

FND 5/8" REBAR YPC #6806 4' DEEP

N=7212196.48 E=16658518.53 Z=1411.52

USED CERTIFICATE RECORDED IN INSTRUMENT #2004-2347 AND A METAL LOCATOR TO FIND A 5/8" REBAR
 YPC #6806 4' DEEP. VERIFIED WITH 1 REMAINING TIE.

THIS CERTIFICATE IS BEING FILED TO UPDATE THE REFERENCE TIES.



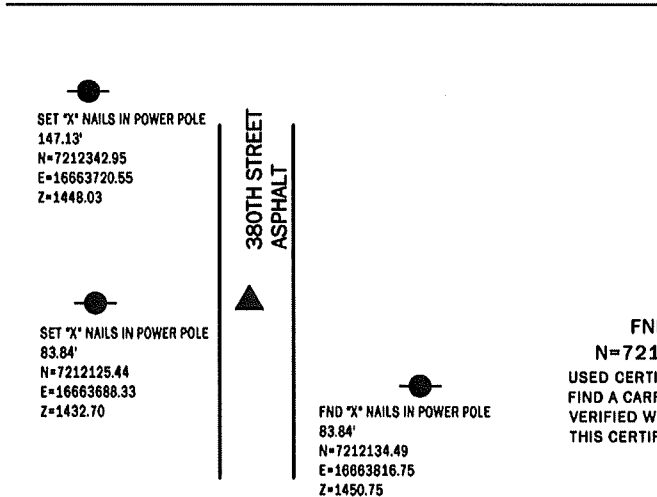
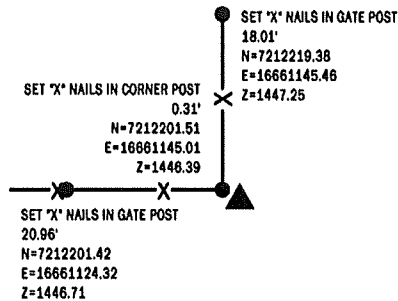
CENTER OF SECTION

SET 5/8" REBAR YPC #17979

N=7212201.37 E=16661145.29 Z=1445.99

OLD RECORDS INDICATE THIS CORNER HAS ALWAYS BEEN A
 PROPERTY DIVISION. PROBED AROUND CORNER POST. FOUND A
 STONE USED FOR GATE POST. DID NOT USE. SET 5/8" REBAR YPC
 #17979 SOUTHEAST OF CORNER POST.

THIS CERTIFICATE IS BEING FILED TO NONE OF RECORD.



E1/4 CORNER

FND CARRIAGE BOLT 1.15' WEST OF CL

N=7212204.73 E=16663770.98 Z=1455.02

USED CERTIFICATE RECORDED IN INSTRUMENT #2000-0180 TO
 FIND A CARRIAGE BOLT 1.15 FEET WEST OF ROAD CENTERLINE.
 VERIFIED WITH 1 REMAINING TIE.

THIS CERTIFICATE IS BEING FILED TO UPDATE THE REFERENCE TIES.

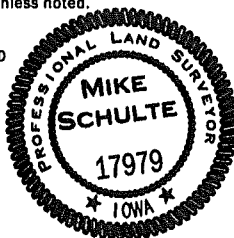
LIST CORNERS TO BE INDEXED

CORNER	SECTION	TWP	RANGE
W1/4 CORNER	10	82	37
E1/4 CORNER	9	82	37
CENTER	10	82	37
E1/4 CORNER	10	82	37
W1/4 CORNER	11	82	37

*All distances are measured horizontally unless noted.

I HEREBY CERTIFY THAT THIS LAND SURVEYING DOCUMENT WAS
 PREPARED BY ME OR UNDER MY DIRECT PERSONAL SUPERVISION AND
 THAT I AM A DULY LICENSED PROFESSIONAL LAND SURVEYOR UNDER
 THE LAWS OF THE STATE OF IOWA.

Mike Schulte
 MIKE SCHULTE
 LICENSE NUMBER: 17979
 LICENSE RENEWAL DATE IS DECEMBER 31, 2023
 PAGES COVERED BY THIS SEAL: 1 OF 1



BASIS OF BEARING

IARCS ZONE 8 - US SURVEY FEET
 IARTN DERIVED - NAD83(2011)EPOCH 2010.00

SCHULTE SURVEYING, INC.

DRAWN BY: MLS/SLG
 PROJ NUMBER: 23-078