

Crawford County Recorder
 Denise Meeves
Fee Book 2011-2842
 12/02/2011 02:52PM
 PLC PLAT CORNER CER
 Book: Page: # Pages: 1
 Total Fees: \$7.00

DD

PREPARED BY & RETURN TO MIKE SCHULTE, SNYDER & ASSOCIATES, INC. 2727 SW SNYDER ROAD, ANKENY, IOWA 50023 (515) 964-2020

UNITED STATES PUBLIC LAND SURVEY CORNER CERTIFICATE OF

Land Survey Monuments situated in Section 3, Township 82 N, Range 37 W, of the Fifth Principal Meridian, CRAWFORD, County, Iowa.
 Previously recorded in BK 2002 PG 2406* in County Recorder's Office.
 (book, page, document number, ect.) *2002-2406

(Show reason for preparing this certificate, the evidence and detailed procedures used in establishing the corner positions and monumentation found or placed.)

Monument Description and Remarks:

SOUTHWEST CORNER SECTION 3-82-37

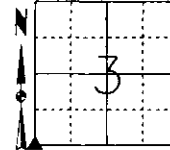
USED RECORDED TIES AND A METAL LOCATOR DUG DOWN 10" AND FOUND A 5/8" REBAR WITH YELLOW PLASTIC CAP #8893.

RECORDING THIS SECTION CORNER TIE BECAUSE THE FOUND MONUMENT AND TIES ARE DIFFERENT THAN THE TIES RECORDED IN BOOK 2004 PAGE 2347.* *2004-2347

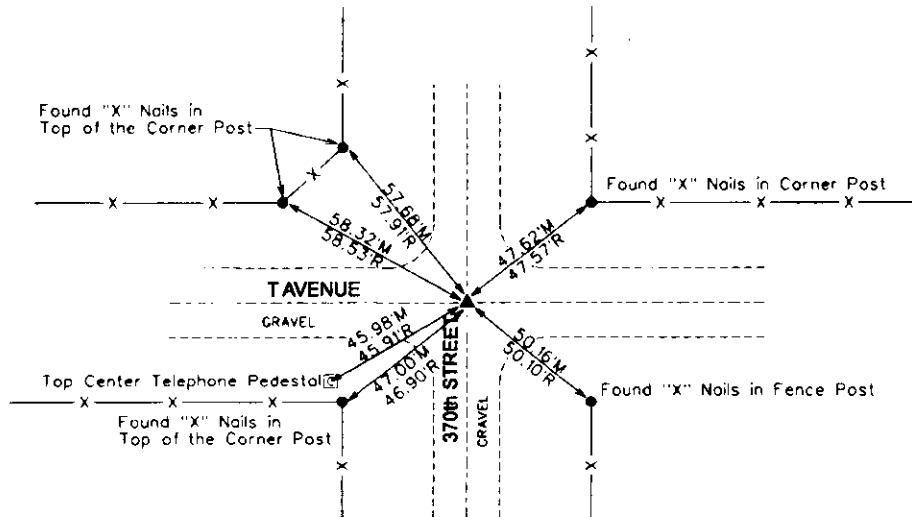
Plan-View

(Show a minimum of three reference ties to durable physical objects, relevant monuments and physical conditions that will enable recovery of the corner.)

SPC 1A NORTH
 US FT 1A RTN DERIVED
 N: 3444079.18
 E: 4472097.55
 EL: 1479.59



SOUTHWEST CORNER
 FOUND 5/8" REBAR WITH YELLOW CAP #8893 10" DEEP



NOTE: ALL DISTANCES MEASURED HORIZONTAL UNLESS OTHERWISE NOTED.

PLS
 11/29/11



I hereby certify that this land surveying document was prepared and the related survey work was performed by me or under my direct personal supervision and that I am a duly licensed Land Surveyor under the laws of the State of Iowa.
Mike Schulte 2011/12/01
 Mike Schulte, PLS Date
 License Number: 17979
 My License Renewal Date is December 31, 2011
 Pages or sheets covered by this seal:
 SHEET 1 OF 1

List Corners to be Indexed

Corners	Section	Twp	Range
SW CORNER	3	82	37
NE CORNER	9	82	37
SE CORNER	4	82	37
NW CORNER	10	82	37

TECH: MLS/SLG PN: 82-37-3 SW 111.0949 DATE: 11/29/11