

2003 MAY 14 PM 12:42

INST. NO. 2003-1834
DENISE HEEVES, RECORDER
Denise Heeves
REC. 6.00

INDEXED DM
FOLLOW UP ml
PROOFED _____

PREPARED BY: J. SCOTT SHEVEL L.S., KUEHL AND PAYER LTD., 423 WEST MAIN ST., SAC CITY, IA 50583 PH. (712)662-7859

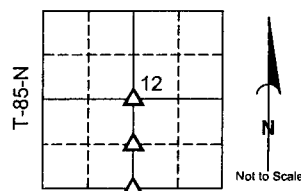
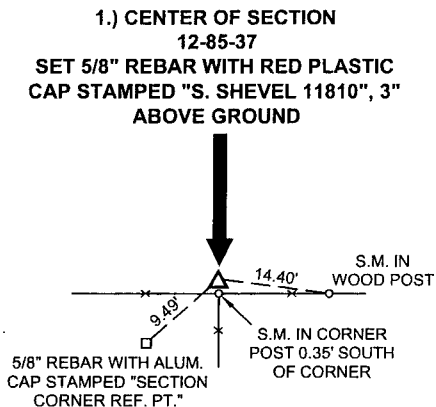
**UNITED STATES PUBLIC LAND SURVEY CORNER CERTIFICATE
OF**

LAND SURVEY MONUMENTS SITUATED IN SECTION 12, TOWNSHIP 85 NORTH,
RANGE 37 WEST, OF THE 5TH PRINCIPAL MERIDIAN, CRAWFORD COUNTY, IOWA.
PREVIOUSLY RECORDED IN BOOK _____ PAGE _____

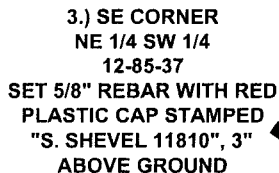
MONUMENT DESCRIPTION AND REMARKS:

- 1.) CENTER OF SECTION 12-85-37: SET 5/8" REBAR WITH RED PLASTIC CAP STAMPED "S. SHEVEL 11810", 3" ABOVE GROUND, ON NORTH SIDE OF CORNER POST
- 2.) S 1/4 CORNER 12-85-37: NO RECORD OF CORNER; SEARCHED & FD. NOTHING; SET LEAD PLUG 0.84' SOUTH OF CENTER JOINT OF CO. RD. E-16; ONLINE BETWEEN THE SW & SE CORNERS AND IN LINE WITH FENCES NORTH AND SOUTH
- 3.) SE CORNER NE 1/4 SW 1/4 12-85-37: SET 5/8" REBAR WITH RED PLASTIC CAP STAMPED "S. SHEVEL 11810", 3" ABOVE GROUND, EQUIDISTANT ON A LINE BETWEEN THE CENTER OF SECTION AND S 1/4 CORNER

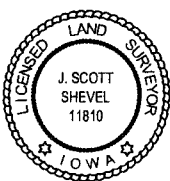
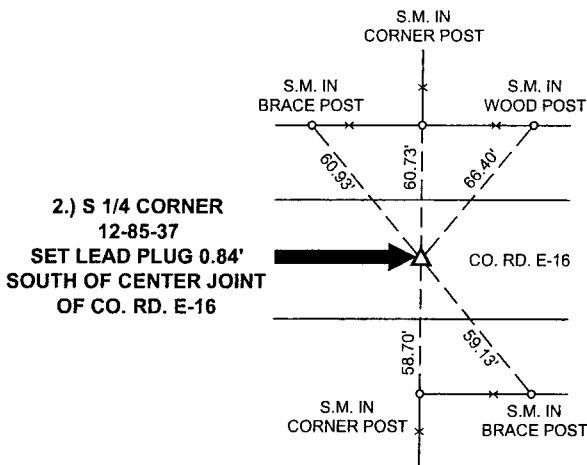
PLAN - VIEW



CRAWFORD COUNTY
CENTER OF SECTION
12-85-37



S 1/4 CORNER 12-85-37
S.M. = SURVEY MARKER PLASTIC REFERENCE DISK AS SHOWN BELOW



I hereby certify that this land surveying document was prepared and the related survey work was performed by me or under my direct personal supervision and that I am a duly licensed Land Surveyor under the laws of the State of Iowa.

J. Scott Shevel 5/12/03
Date:
J. Scott Shevel
License Number 11810
My license renewal date is December 31, 2003
Pages covered by this seal 1

List Corners to be Indexed

Corners	Section	Township	Range
1) CENTER	12	85	37
2) S 1/4	12	85	37
3) SE NE 1/4 SW 1/4	12	85	37

PN: 030541
DRAWN: JMK