

RECEIVED
 01-22-2008
 11:53 AM
 Denise Meeves

This document prepared by : Semke & Associates - 712-792-2276
 Micheal G. Semke, L.S. #10318 - 716 N. Crawford St. - Carroll, Iowa

UNITED STATES PUBLIC LAND SURVEY CORNER CERTIFICATE of
 Land Survey Monuments situated in Section 1, Township 85 North, Range 37
 West, of the Fifth Principal Meridian, Crawford County, Iowa.
 Previously recorded in Book , Page in County Recorder's Office.

(Show reason for preparing this certificate, the evidence or detailed procedures used in establishing the corner positions and monumentation found or placed.)

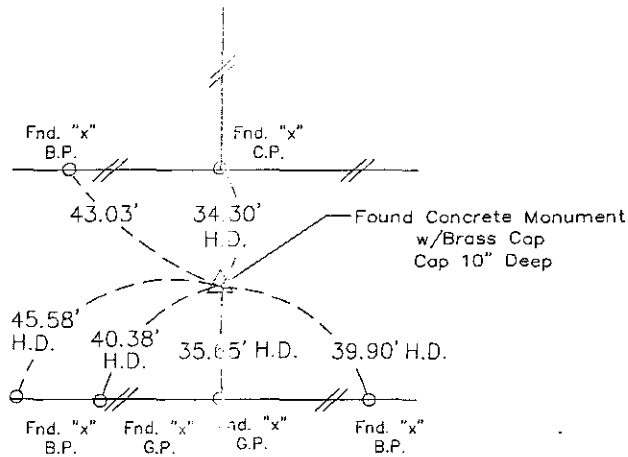
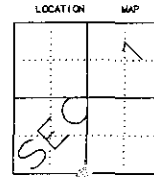
S 1/4 Corner Found Concrete Monument w/Brass
Cap 10" Deep

Note: All pins set are 1/2" x 24" Rerod w/Yellow Cap #10318 unless noted otherwise.

PLAN - VIEW

(Show a minimum of three reference ties to durable physical objects, relevant monuments and physical conditions that will enable recovery of the corner.)

S 1/4 Cor
 1-85-37



Note: all ties slope chained unless noted otherwise.

	I HEREBY CERTIFY THAT THIS LAND SURVEYING DOCUMENT WAS PREPARED AND RELATED SURVEY WORK WAS PERFORMED BY ME OR UNDER MY DIRECT PERSONAL SUPERVISION AND THAT I AM A DULY LICENSED LAND SURVEYOR UNDER THE LAWS OF THE STATE OF IOWA.	
	Signature Date Micheal G. Semke, L.S. No. 10318 Printed of Typed Name	
Pages or sheets covered by this seal <u>THIS PAGE</u> My license renewal date is 12/31/09.		

List Corners to be indexed

Corners	Section	Twp	Range
S 1/4 Cor	1	85	37
N 1/4 Cor	12	85	37