

INDEXED DM
 FOLLOW UP WCE
 PROOFED DM
 SCANNED cy

REC011661



Crawford County Recorder Denise Meeves
 FEE BOOK 2006-2429 8/18/2006 @ 11:07AM
 PLC PLAT CORNER CERBook: Page: #: 1
 Total Fees: \$7.00

PREPARED BY & RETURN TO MICHAEL G. GEIER, SNYDER & ASSOCIATES, INC. 2727 SW SNYDER ROAD, ANKENY, IOWA 50023 (888) 964-2020

UNITED STATES PUBLIC LAND SURVEY CORNER CERTIFICATE OF

Land Survey Monuments situated in Section 23, Township 85, Range 37, of the Fifth Principal Meridian, CRAWFORD County, Iowa. Previously recorded in N/A in County Recorder's Office. (book, page, document number, ect.)

(Show reason for preparing this certificate, the evidence and detailed procedures used in establishing the corner positions and monumentation found or placed.)

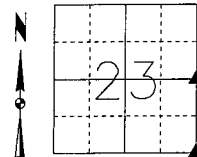
Monument Description and Remarks:

SOUTHEAST CORNER - FOUND CONCRETE MONUMENT IN @ 390th STREET 30" DEEP.
SET 1/2" REBAR CAP *11804 6" DEEP BELOW GRAVEL SURFACE.

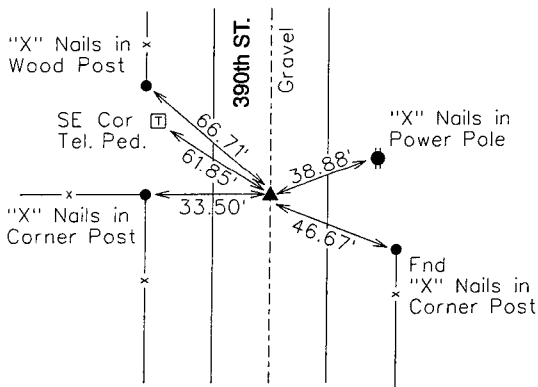
E 1/4 CORNER - NO RECORDED OR COUNTY TIES WERE FOUND. SET 1/2" REBAR CAP *11804 INTERSECTING THE NE AND SE CORNERS WITH THE W 1/4 CORNER AND CENTER OF SECTION.
LOCATION OF CORNER MATCH @ OF JACKSON AVE AND @ 390TH STREET. ROW FENCES ALONG JACKSON AVE TIE IN WITH EAST-WEST SECTION LINE.

Plan-View

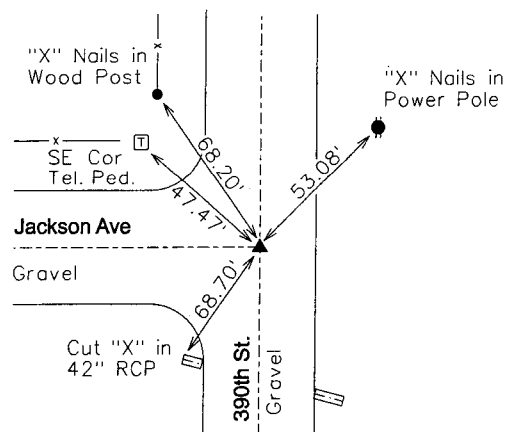
(Show a minimum of three reference ties to durable physical objects, relevant monuments and physical conditions that will enable recovery of the corner.)



SOUTHEAST CORNER
 FOUND CONCRETE MONUMENT &
 SET 1/2" REBAR
 CAP *11804



E 1/4 CORNER
 "X" Nails in Power Pole
 SET 1/2" REBAR
 CAP *11804



List Corners to be Indexed

Corners	Section	Twp	Range
SE COR	23	85	37
NE COR	26	85	37
NW COR	25	85	37
SW COR	24	85	37
E 1/4 COR	23	85	37
W 1/4 COR	24	85	37

LICENSED LAND SURVEYOR
 MICHAEL G. GEIER
 11804
 IOWA

I hereby certify that this land surveying document was prepared and the related surveying work was performed by me or under my direct supervision and that I am a duly licensed Land Surveyor under the laws of the State of Iowa.

Michael G. Geier 8-10-06
 Michael G. Geier, PLS Date

License Number 11804
 My License Renewal Date is December 31, 2007

Pages or sheets covered by this seal:
 SHEET 1 OF 1

TECH: JDP

PN: 85-37-23 (105.1255)

DATE: 04/05/06