

INDEXED DM/gy  
 FOLLOW UP DM/gy  
 PROOFED DM/gy  
 SCANNED gy

REC011660



Crawford County Recorder Denise Meeves

FEE BOOK 2006-2428 8/18/2006 @ 11:06AM

PLC PLAT CORNER CERBook: Page: #: 1

Total Fees: \$7.00

PREPARED BY & RETURN TO MICHAEL G. GEIER, SNYDER & ASSOCIATES, INC. 2727 SW SNYDER ROAD, ANKENY, IOWA 50023 (888) 964-2020

### UNITED STATES PUBLIC LAND SURVEY CORNER CERTIFICATE OF

Land Survey Monuments situated in Section 23, Township 85, Range 37, of the Fifth Principal Meridian, CRAWFORD County, Iowa. Previously recorded in N/A in County Recorder's Office.  
 (book, page, document number, ect.)

(Show reason for preparing this certificate, the evidence and detailed procedures used in establishing the corner positions and monumentation found or placed.)

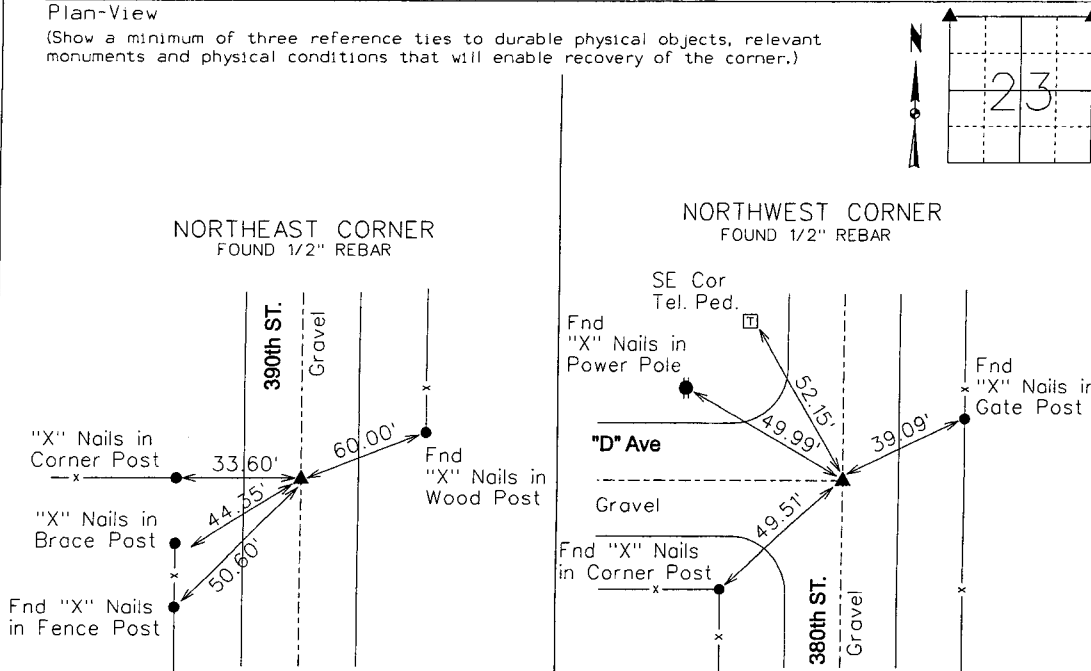
Monument Description and Remarks:

NORTHEAST CORNER - FOUND 1/2" REBAR IN & 390th STREET USING COUNTY ENGINEER SECTION CORNER TIES AND RETIED SECTION CORNER.

NORTHWEST CORNER - FOUND 1/2" REBAR IN & 380th STREET AND & "D" AVENUE USING EXISTING TIES AND RETIED SECTION CORNER.

Plan-View

(Show a minimum of three reference ties to durable physical objects, relevant monuments and physical conditions that will enable recovery of the corner.)



List Corners to be Indexed

Corners	Section	Twp	Range
NW COR	23	85	37
SE COR	15	85	37
NE COR	22	85	37
SW COR	14	85	37
NE COR	23	85	37
NW COR	24	85	37
SE COR	14	85	37
SW COR	13	85	37



I hereby certify that this land surveying document was prepared and the related surveying work was performed by me or under my direct supervision and that I am a duly licensed Land Surveyor under the laws of the State of Iowa.

*Michael G. Geier 8-10-06*  
 Michael G. Geier, PLS Date

License Number 11804

My License Renewal Date is December 31, 2007

Pages or sheets covered by this seal:

SHEET 1 OF 1

TECH: JDP

PN: 85-37-23 (105.1255)

DATE: 04/05/06